

## Report Timeframe: August 13 to August 19, 2023

**Statewide hospitalization levels: Low.** New COVID-19 admissions are below 10 per 100,000 Vermonters per day.

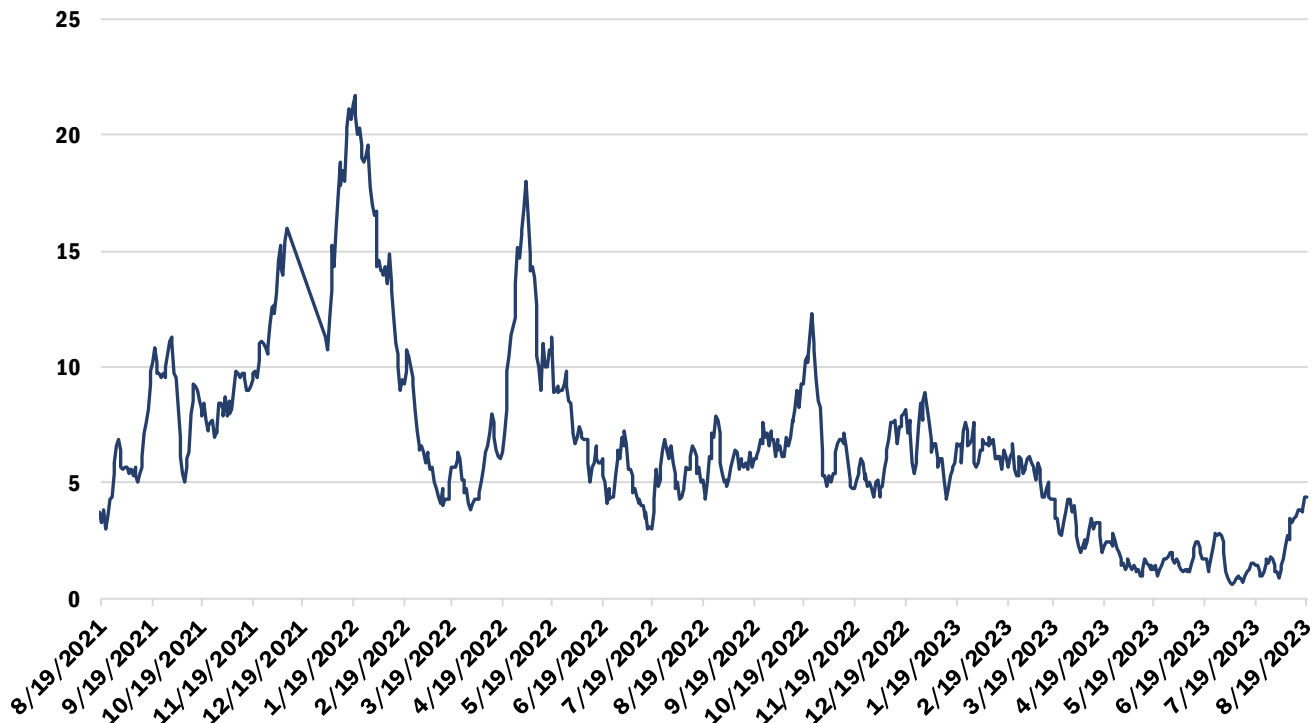
- New hospital admissions of patients with COVID-19, last 7 days: 4.97 per 100K
  - 31 total new admissions with COVID-19 (increase from previous week)

The number of reportable COVID-19 cases is still available in this report, below. Laboratory-confirmed and diagnosed COVID-19 cases and COVID-19 outbreaks must still be reported to the Vermont Department of Health

Vermont Department of Health recommendations: [Preventing COVID-19 \(healthvermont.gov\)](https://healthvermont.gov)

## Hospitalizations Over Time

### Daily Hospitalizations With COVID-19 Diagnosis Seven-Day Rolling Average



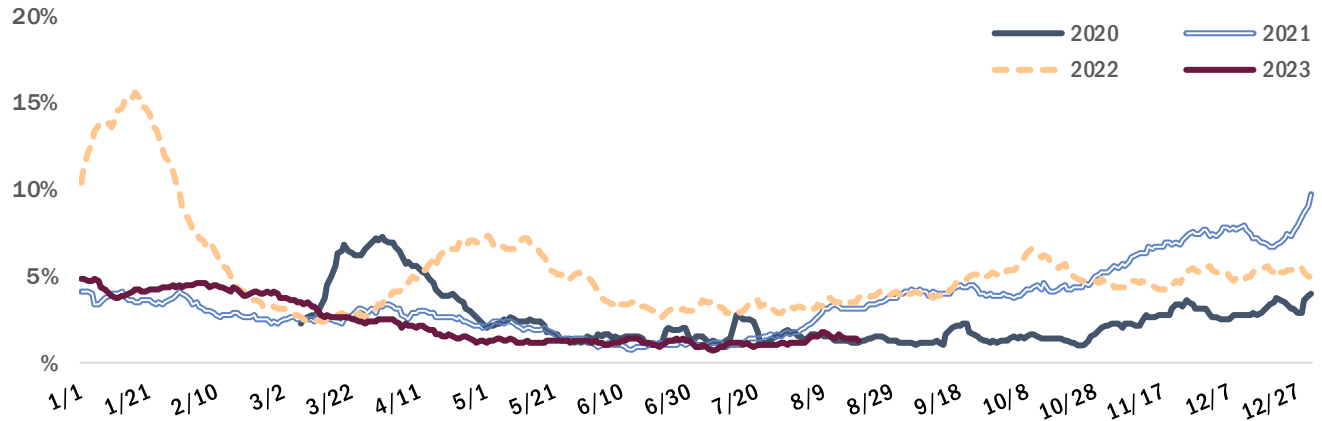
Source: U.S. Department of Health and Human Services HHS Protect

The seven-day rolling average of hospital patients admitted with a laboratory-confirmed COVID-19 increased to between four and five, the highest rolling daily average since March of this year. The number is the daily average of the previous seven days; for example, the value for May 28 is the daily average for the days of May 21 through May 27.

## Syndromic Surveillance

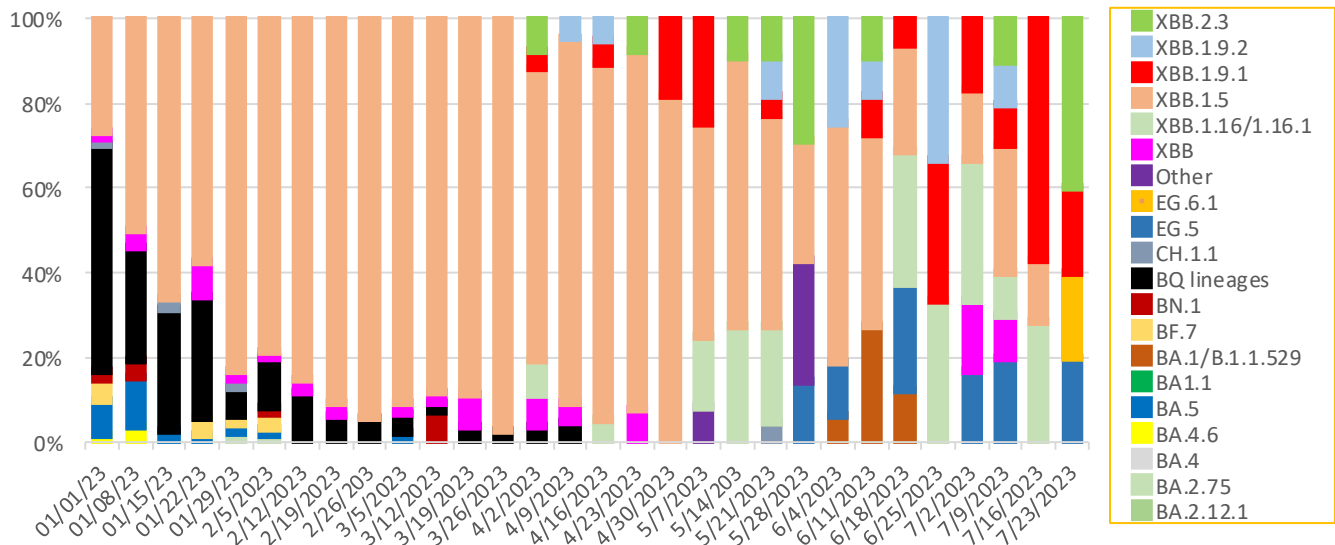
The Electronic Surveillance System for the Early Notification of Community-based Epidemics (ESSENCE) reflects all individual visits from participating emergency departments<sup>1</sup>, to identify visits for COVID-Like Illness (CLI). During this reporting period the proportion of emergency visits in participating departments that included CLI was over 1%, lower than the same time in 2021 and 2022.

### Percent of Emergency Visits with COVID-Like Illness Seven-Day Rolling Average, over Calendar Year



Source: Electronic Surveillance System for the Early Notification of Community-based Epidemics (ESSENCE)

## Proportion of sequenced variants



Only 3 specimens are available for the week of 6/25/23. (Sources: LabCorp, Quest, Helix, Health Department Whole Genome Sequencing program)

<sup>1</sup> All Vermont hospitals and two urgent care clinics are included in ESSENCE.

### Wastewater Monitoring



Several Vermont wastewater districts participate with the National Wastewater Surveillance System (NWSS). Montpelier has recently been added as a new site.

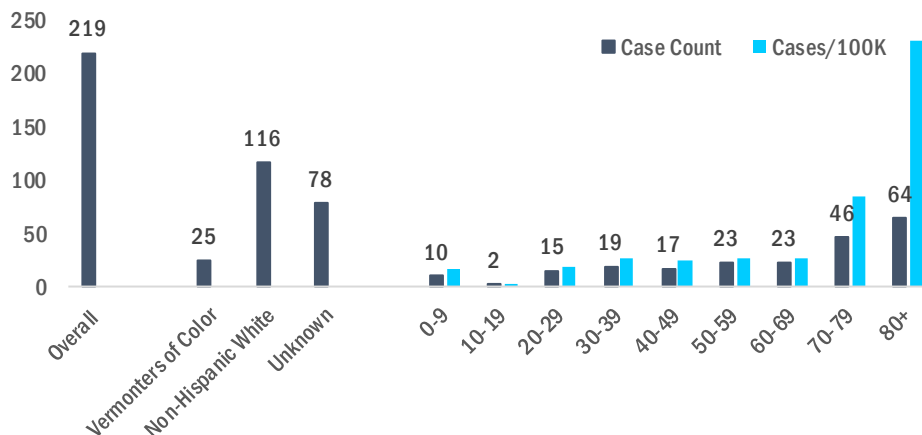
Starting last week, wastewater monitoring results are described by how their COVID-19 measurements have been trending. Trend categories are: Sustained Decrease, Decrease, Plateau, Increase, and Sustained Increase.

NWSS Site	Current Trend
Bennington	Plateau
Brighton	*
Burlington (Main plant)	Increase
Burlington (North plant)	Plateau
Essex Junction	Sustained Increase
Montpelier	Plateau
Ludlow	*
South Burlington	Plateau
St. Albans City	Plateau
St. Johnsbury	Plateau
Troy / Jay WWTP	*
Winooski	Plateau

\*Data will be reported when available.

### Identified Cases

Vermont Weekly Case Counts/Rates



Note: Case counts and rates are calculated by *confirmed* and *probable* cases reported to the Health Department.

To calculate rates, counts are divided by 2019 Vermont population estimates for respective category and expressed per 100,000 in each category.

Due to a high number of cases missing race/ethnicity data, rates are not provided for race/ethnicity categories.

**COVID-19 Outbreaks Reported August 15 to August 21**

For purposes of this report, an outbreak is defined as three or more epidemiologically linked cases of COVID-19, where at least one such case has been laboratory or otherwise clinically confirmed as COVID-19.

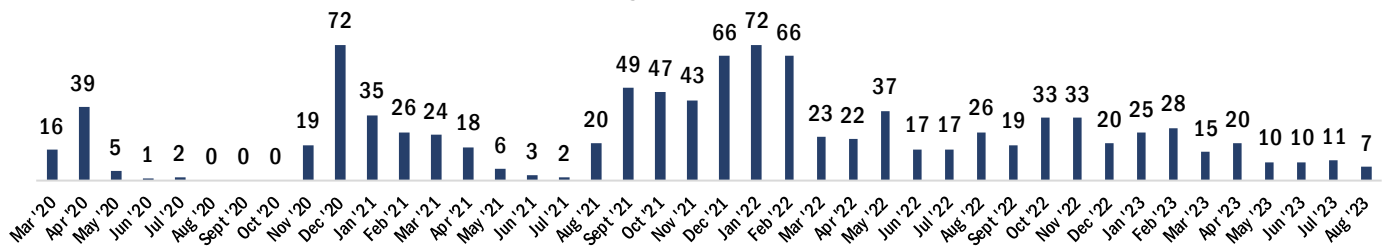
Facility type	New Outbreaks Reported 8/15 – 8/21
Long-term Care (LTC)	1
Non-LTC Healthcare	1
Correctional Facility	-
School/childcare	-
Other	-

County	New Outbreaks Reported 8/15 – 8/21
Addison	1
Bennington	-
Caledonia	-
Chittenden	1
Essex	-
Franklin	-
Grand Isle	-
Lamoille	-
Orange	-
Orleans	-
Rutland	-
Washington	-
Windham	-
Windsor	-

**Cumulative COVID-19 Deaths as of August 19, 2023**

Total	Age group								
	Under 10	10-19	20-29	30-39	40-49	50-59	60-69	70-79	80+
1004	1	0	2	11	19	71	102	230	568

**Monthly COVID-19 Deaths**



Note: Deaths are from registered death certificates and represent preliminary data. A change in death count may represent new deaths, corrections, or other updates.

Data Source: Vermont Department of Health Vital Statistics System.

For more information about this report, please contact [john.davy@vermont.gov](mailto:john.davy@vermont.gov)