



Cancer Data Pages

Chapter 5: Cancer Survivorship

Department of Health Surveillance

Published August 2022

Table of Contents

Topic	Page
Cancer Prevalence	5
Survivorship Health:	
General Health	9
Emotional or Social Support	11
Survivorship Compared to Experience of Individuals Never Diagnosed with Cancer:	
Poor Health Days	13
Co-Morbidities	14
Health Systems	16
Food Insecurity	17
Prevention	18
Risk Factors	19
Tobacco Use	20
Data Sources and Notes	21

Introduction: Cancer Survivorship

Cancer is a group of more than 100 different diseases that often develop gradually as the result of a complex mix of lifestyle, environmental, social and genetic factors.

Cancer prevalence is the number or proportion of people alive today who have ever been diagnosed with cancer. This includes individuals who are newly diagnosed, in active treatment, have completed active treatment and those living with progressive symptoms of the disease. Prevalence is often compared to *incidence*, which is defined as the number or rate of new cancer diagnoses during a year.

A person who is diagnosed with cancer is most commonly called a *cancer survivor*, though this term is not universally accepted. Similarly, *survivorship* is the experience of those who have ever been diagnosed with cancer and describes the time from diagnosis to the end of the individual's life.

Throughout this presentation, *cancer* refers to any type of cancer except skin cancer.

Vermont Health Equity Priority Populations

The Vermont Department of Health recognizes that some individuals are more likely to be affected by cancer than others due to social, environmental and economic disadvantages.

In developing the [2025 Vermont Cancer Plan](#), four populations of focus were chosen to track to assess disparities in health behaviors and outcomes. These four populations are highlighted in these data pages as well to support work focusing on decreasing disparities.

The four populations of focus are defined in the following ways, based on data available from VDH's data sources:

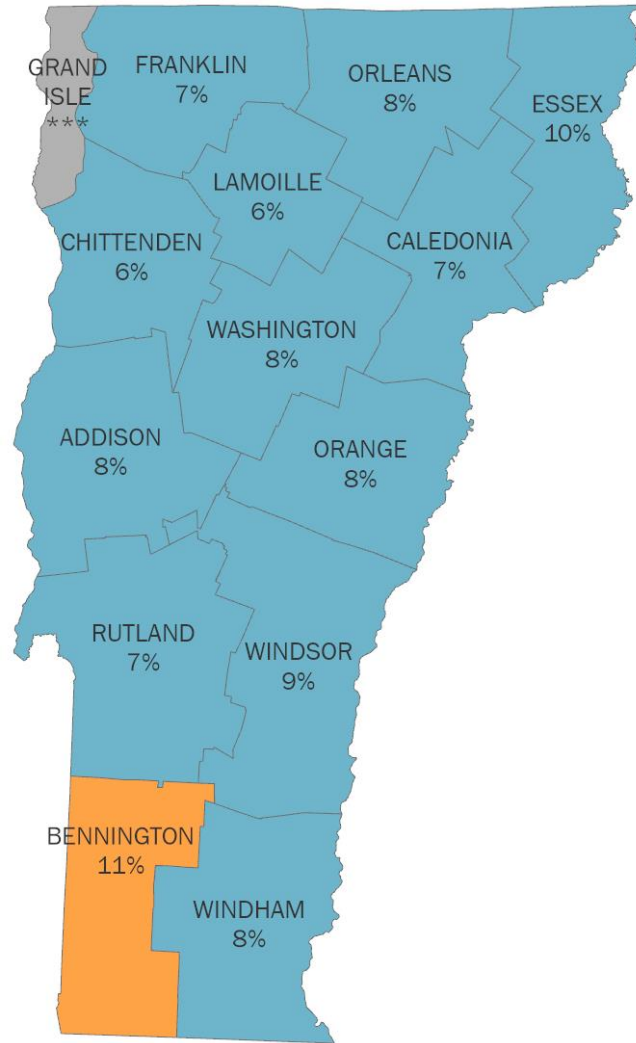
- **Black, Indigenous and people of color (BIPOC):** Individuals who self-identified that they were of Hispanic, Latino/a, or Spanish origin, and/or responded that their race is one or more of the following: Black or African American, American Indian or Alaska Native, Asian, Pacific Islander.
- **Lesbian, gay, bisexual, transgender and queer (LGBTQ+) Vermonters:** Data sources only ask respondents to self-identify if they are lesbian, gay, bisexual and/or transgender. To best represent the available data therefore, we use **LGBT** when discussing findings from these data sources.
- **Vermonters living with disabilities:** Individuals who self-identified as having one or more of the following conditions: sight impairment, being deaf or having serious difficulty hearing, difficulty walking, difficulty making decisions, difficulty doing errands alone, difficulty getting dressed alone.
- **Low-income Vermonters:** Individuals who have a household income that is 250% or less of the federal poverty limit.

Cancer Prevalence

Vermonters have been diagnosed with cancer at the same rate as the US population.



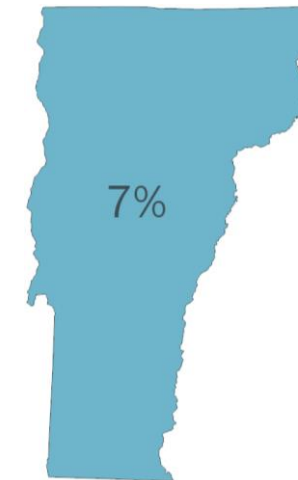
Vermont Department of Health Source: BRFSS 2019



Adults in **Bennington county** are more likely to have been diagnosed with cancer than Vermont adults in general.

*** Sample size too small to report.

- Higher than state rate
- Same as state rate



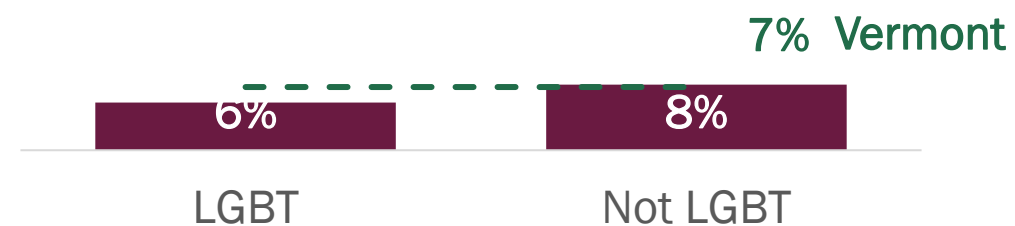
Vermont Department of Health Source: BRFSS 2018 and 2019

Cancer Prevalence in Vermont

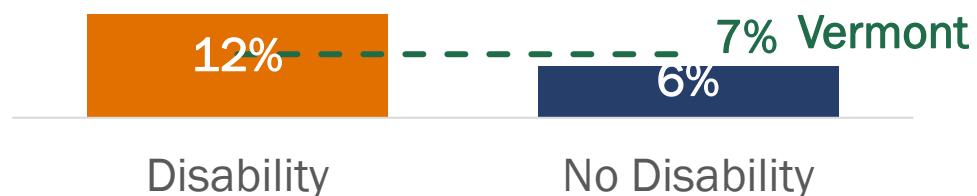
BIPOC and White, Non-Hispanic adults have been diagnosed with cancer at a similar rate.



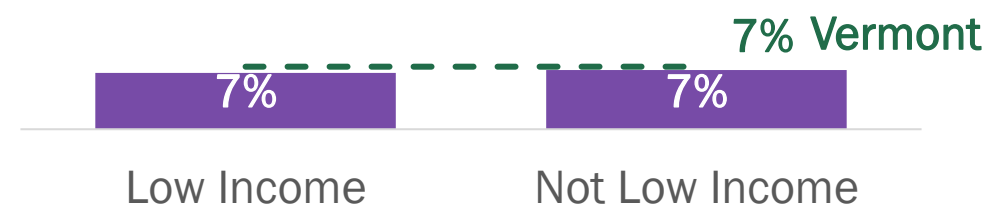
LGBT and non-LGBT adults have been diagnosed with cancer at a similar rate.



 Adults with a disability have been diagnosed with cancer at a higher rate than those without a disability.

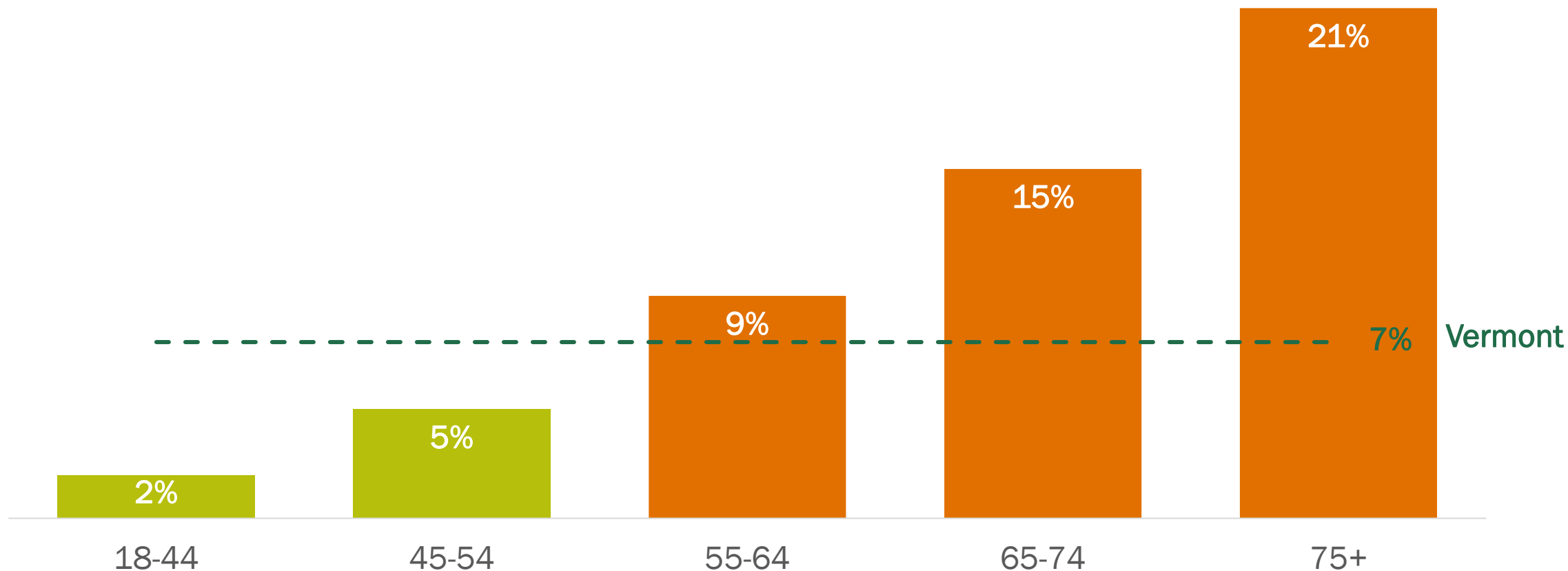


Adults with and without a low income have been diagnosed with cancer at the same rate.



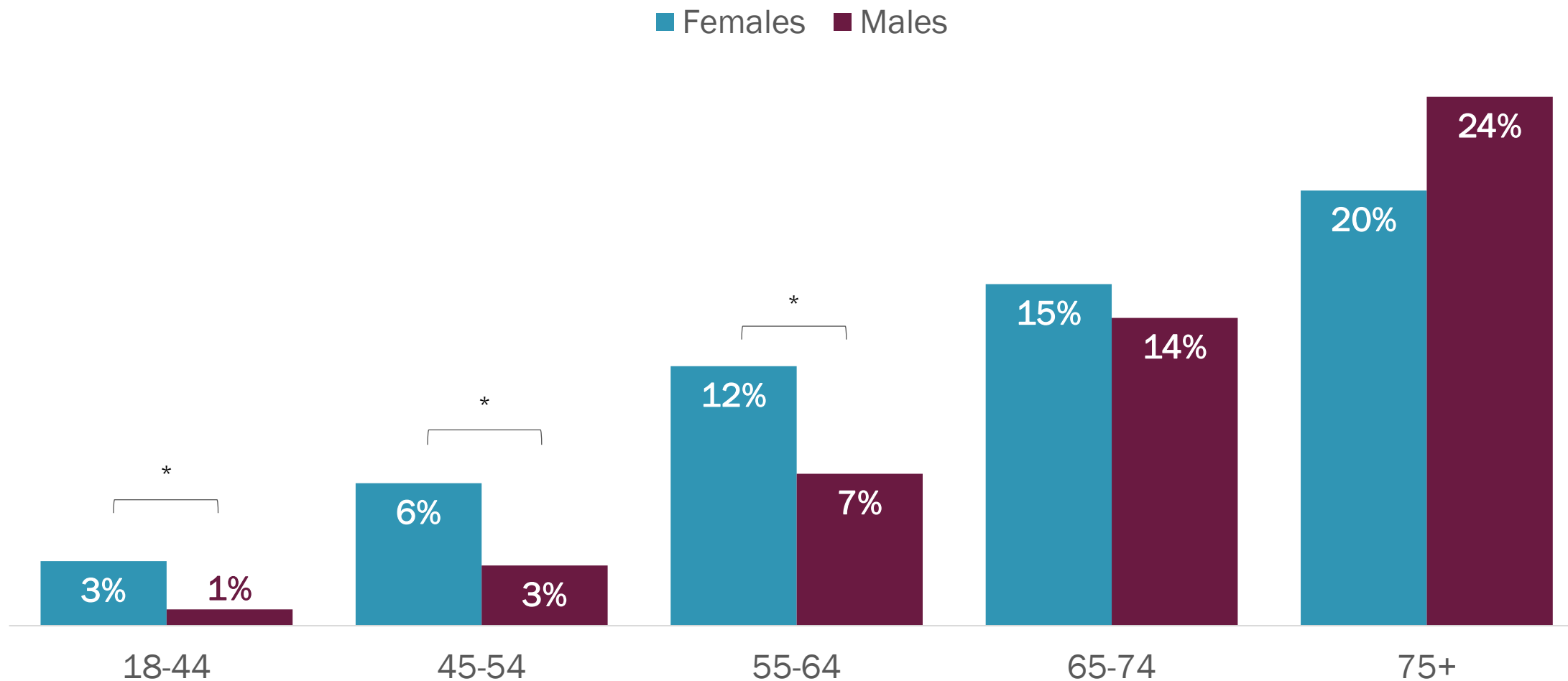
The prevalence of cancer increases as age increases.

Vermonters ages 55+ have been diagnosed with cancer more than Vermonters in general.



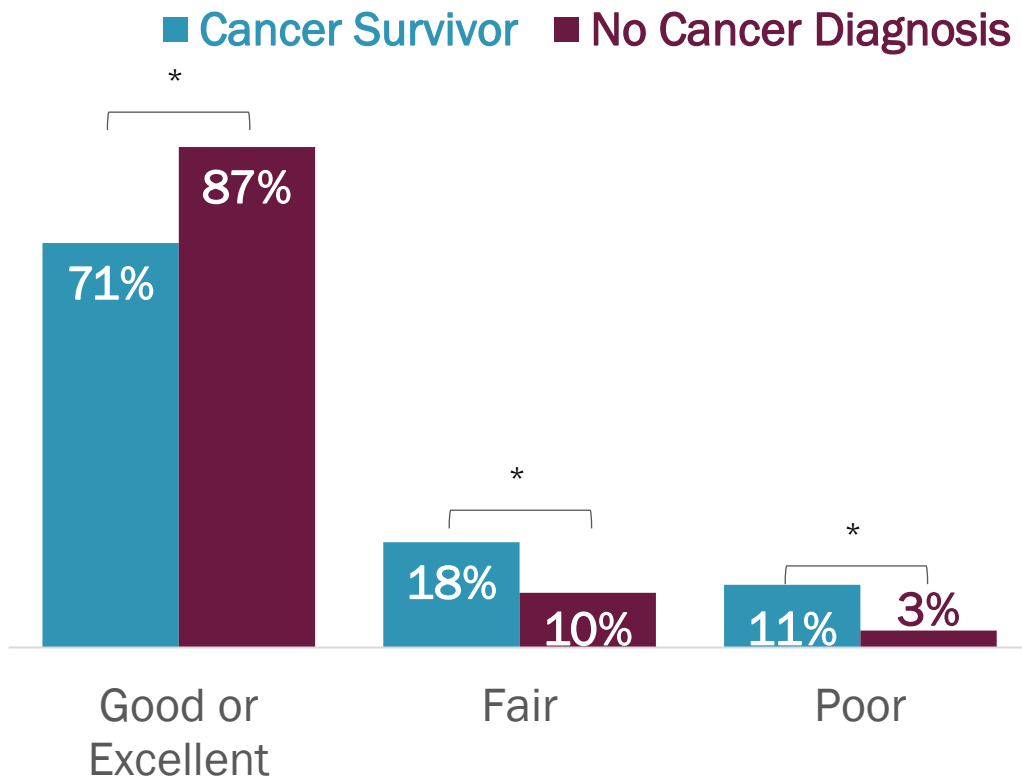
Vermont Department of Health Source: BRFSS 2018, 2019

Females under the age of 65 are more likely to have been diagnosed with cancer than males of the same age.

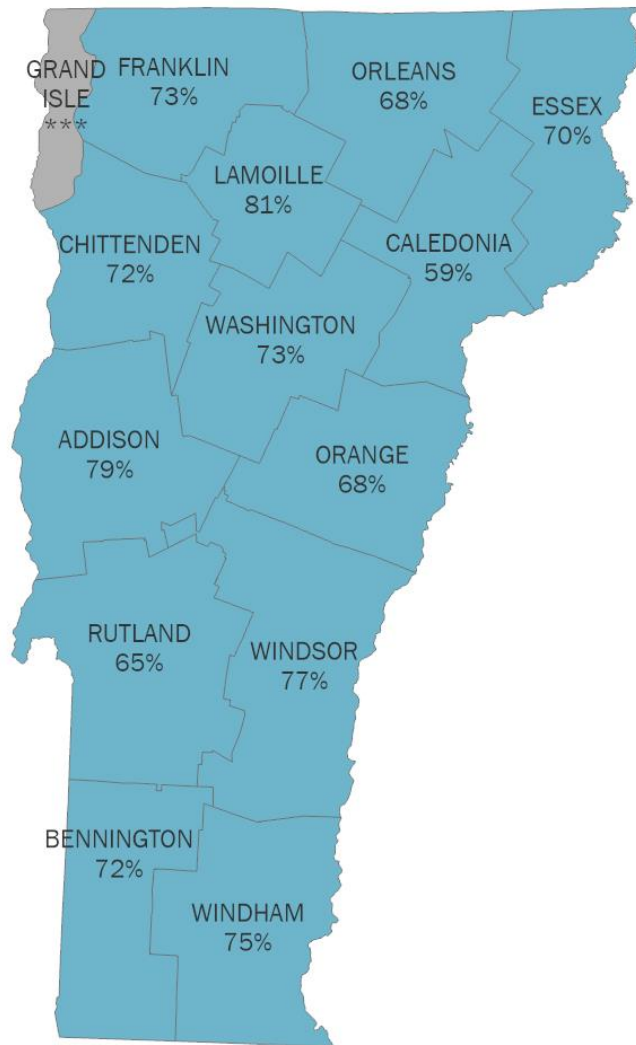


General Health

Cancer survivors report good or excellent health less and fair and poor health more than those without a cancer diagnosis.



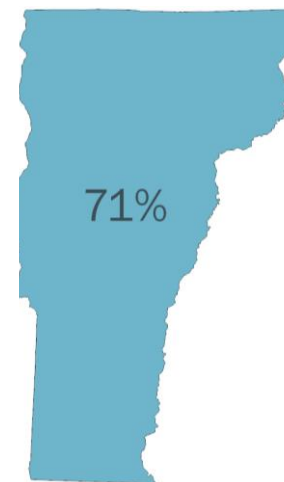
Vermont Department of Health Source: BRFSS 2018 and 2019



Cancer survivors in all counties report good or excellent health at a similar rate as Vermont survivors.

*** Sample size too small to report.

■ Same as state rate

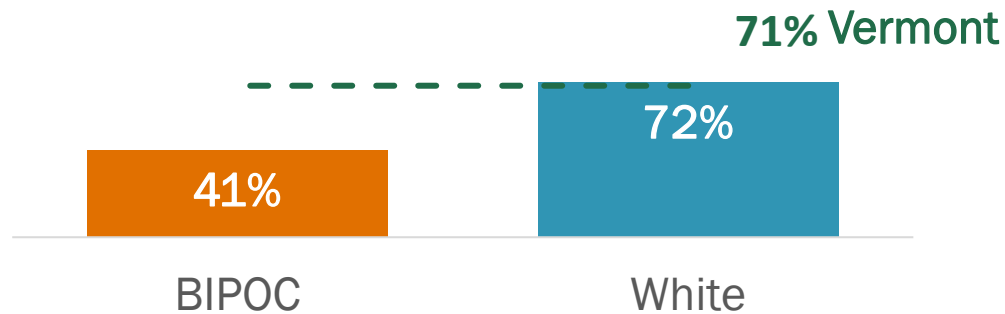


*Indicates significant difference between groups.

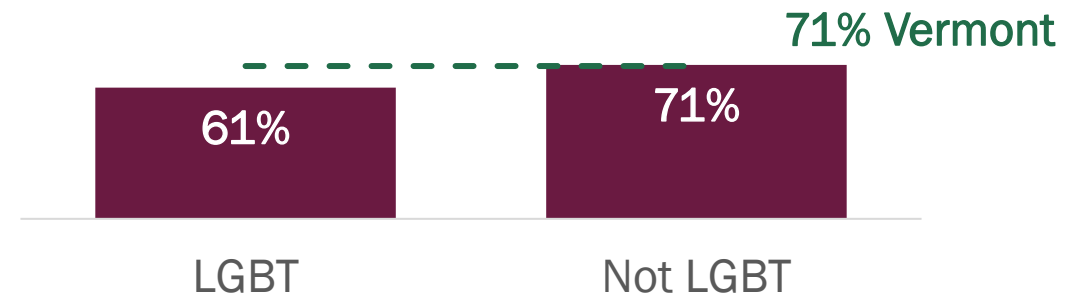
General Health



BIPOC cancer survivors report good or excellent health less than White, Non-Hispanic survivors.



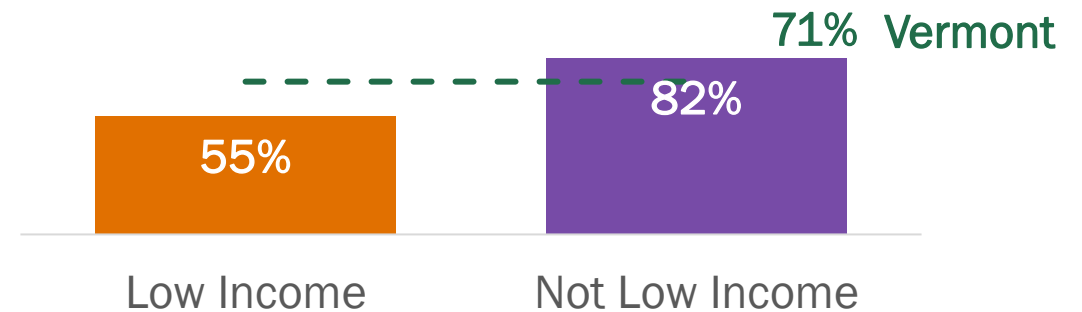
LGBT and non-LGBT cancer survivors report good or excellent health at a similar rate.



Cancer survivors with a disability report good or excellent health less than those without a disability.



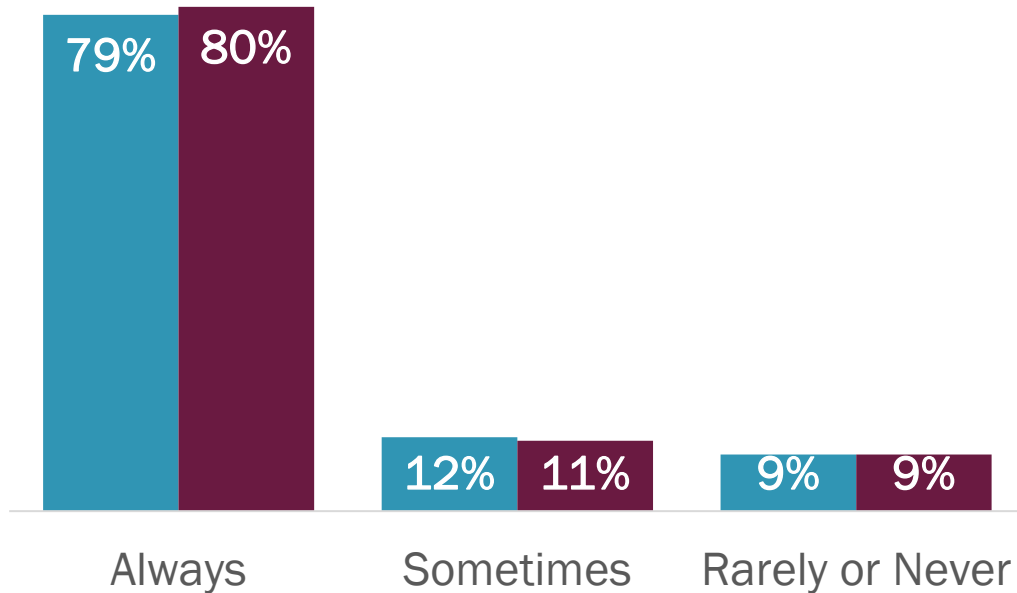
Cancer survivors with a low income report good or excellent health less than those without a low income.



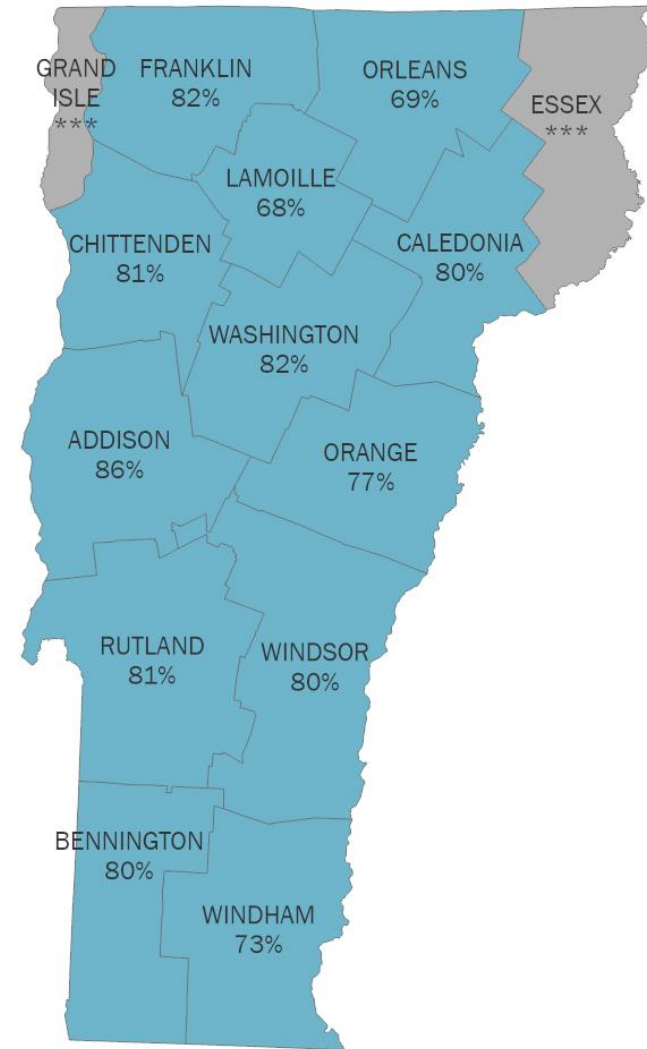
Emotional or Social Support

Cancer survivors receive emotional and social support at a similar rate as those never diagnosed with cancer.

■ Cancer Survivors ■ No Cancer Diagnosis



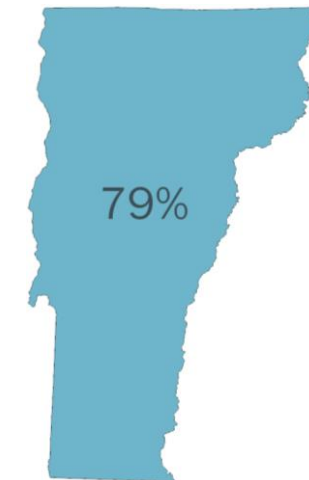
Vermont Department of Health Source: BRFSS 2018



Survivors in each county always or usually receive emotional or social support at a similar rate as Vermonters in general.

*** Sample size too small to report.

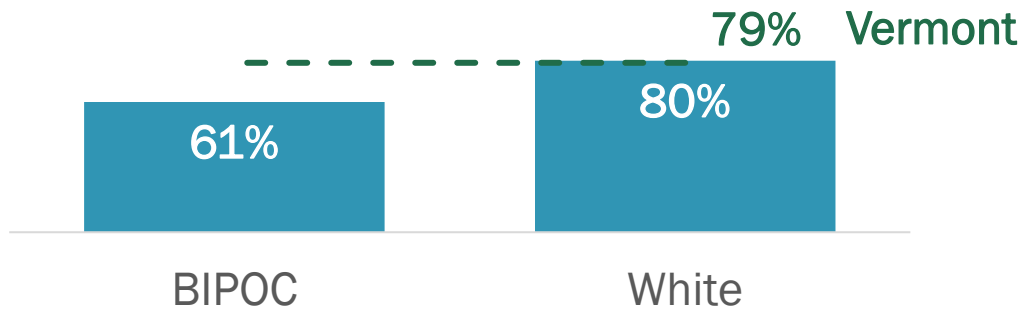
■ Same as state rate



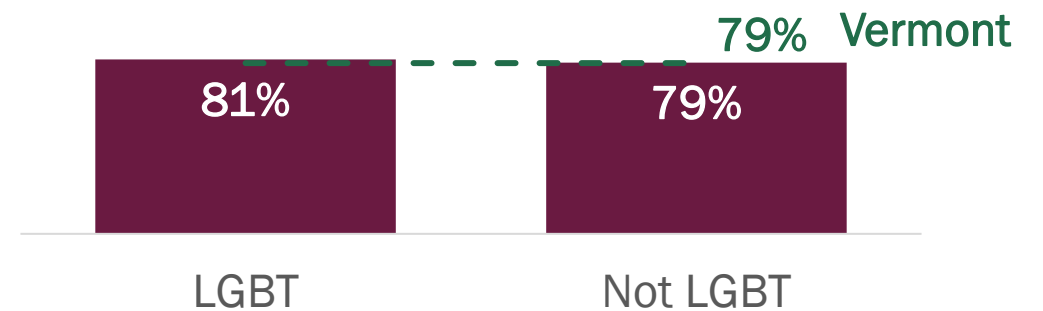
Vermont Department of Health Source: BRFSS 2018 and 2019

Emotional or Social Support

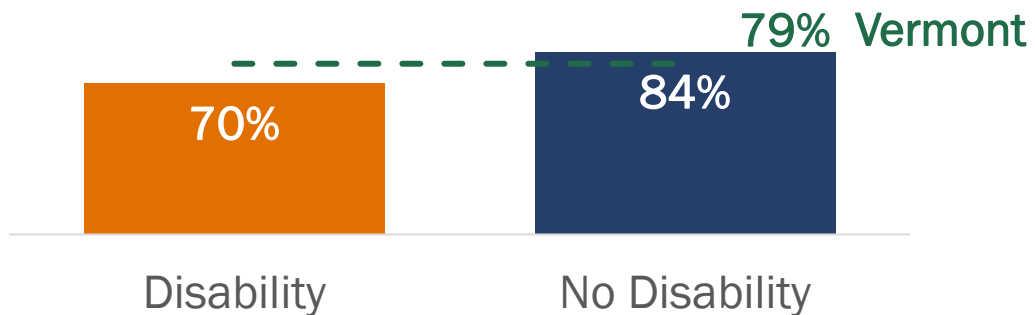
BIPOC and White, Non-Hispanic cancer survivors always or usually receive emotional or social support at a similar rate.



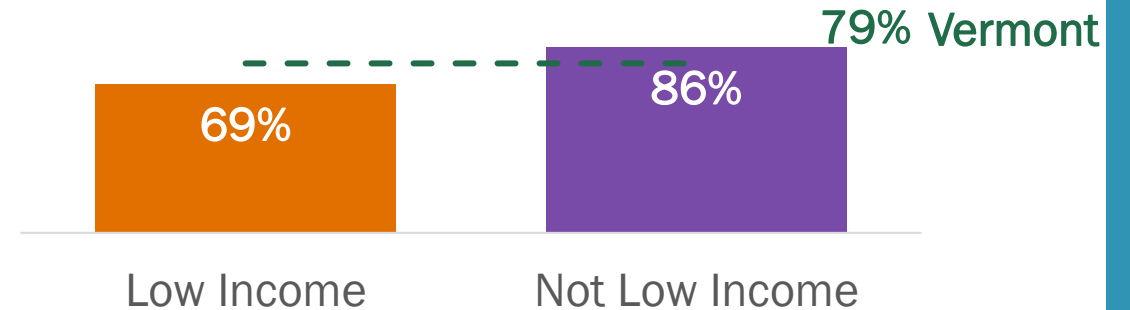
LGBT and non-LGBT cancer survivors always or usually receive emotional or social support at a similar rate.



! Cancer survivors with a disability always or usually receive emotional or social support less than those without a disability.



! Cancer survivors with a low income always or usually receive emotional or social support less than those without a low income.



Cancer survivors are more likely to report poor health than those never diagnosed with cancer.

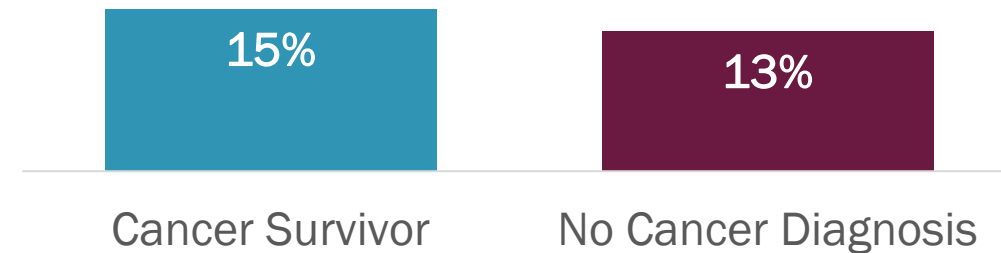
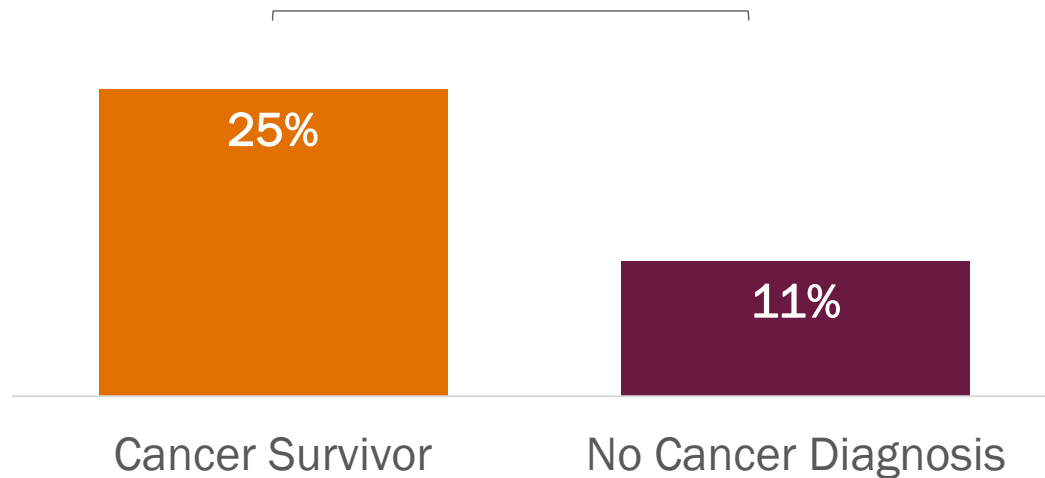


Cancer survivors are more likely to report poor physical health more than 13 days a month than **those never diagnosed with cancer.**



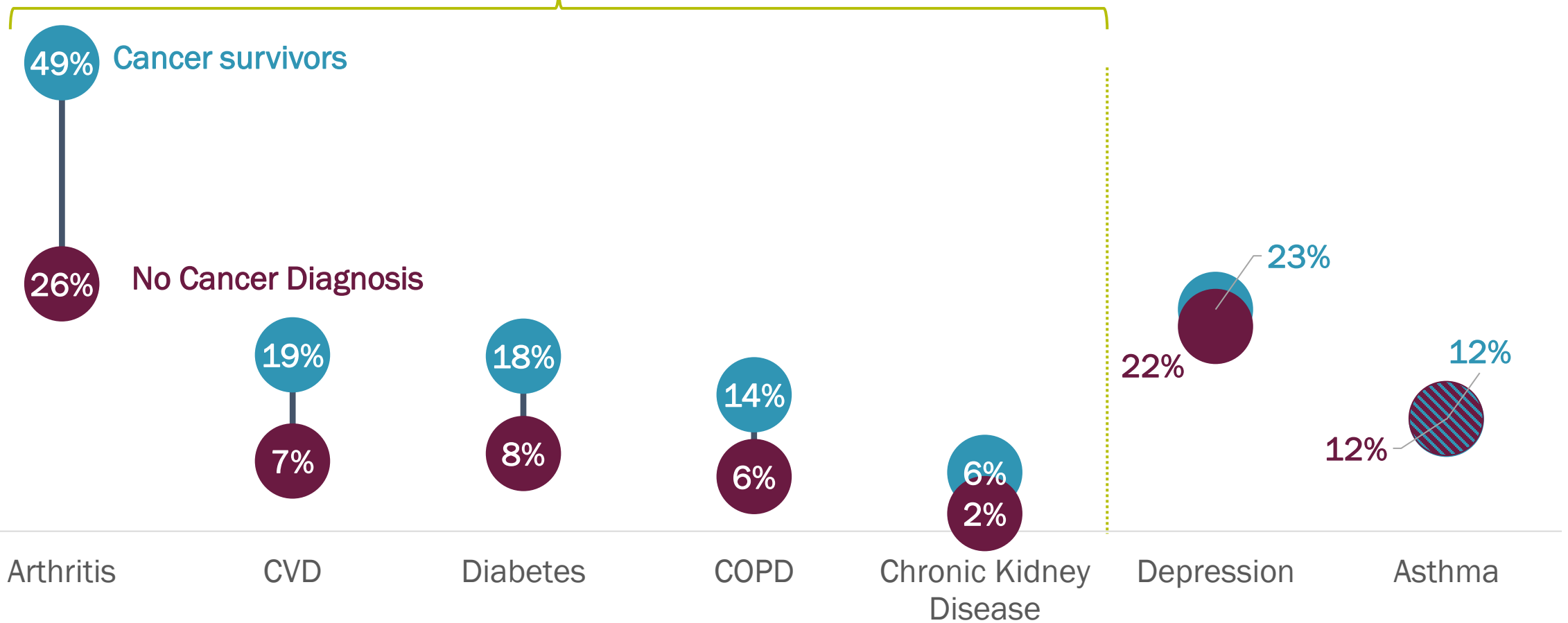
Cancer survivors and **those never diagnosed with cancer** report poor mental health more than 13 days a month at a similar rate.

*



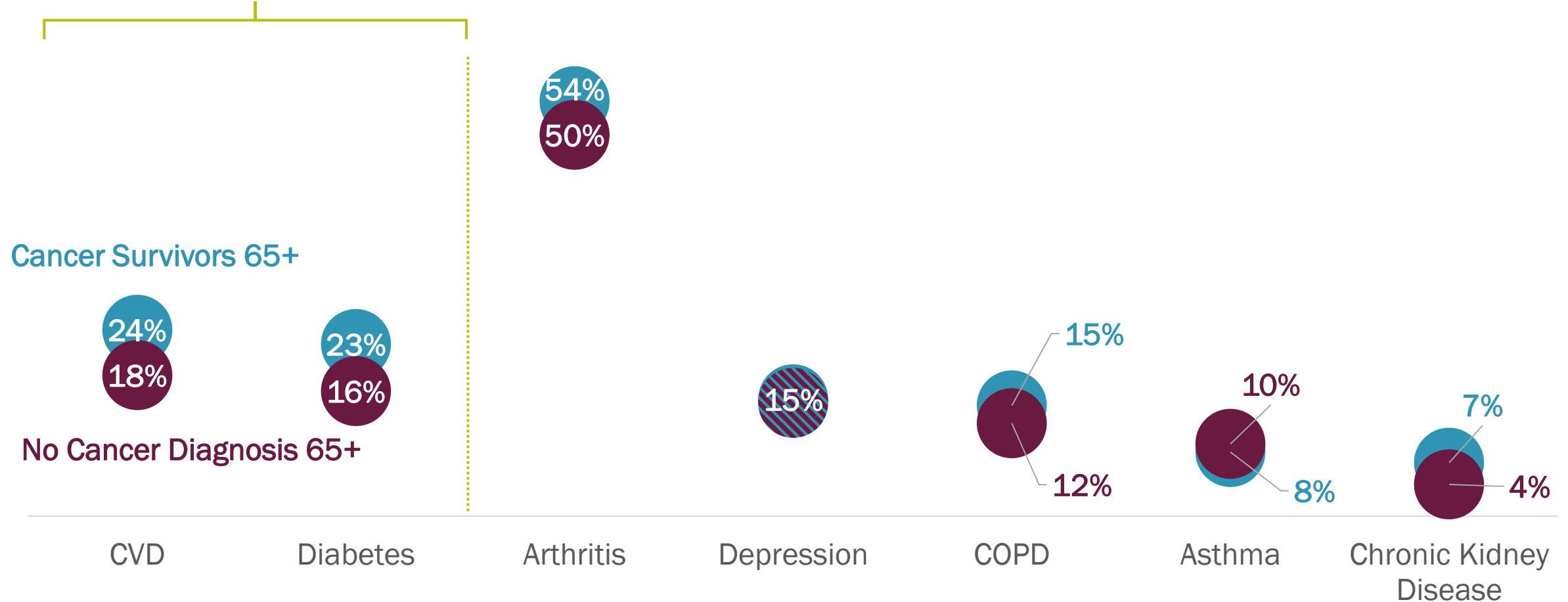
Cancer survivors are more likely to report arthritis, cardiovascular disease, diabetes, COPD and chronic kidney disease than those with no cancer diagnosis.

Significant difference between cancer survivors and individuals with no cancer diagnosis



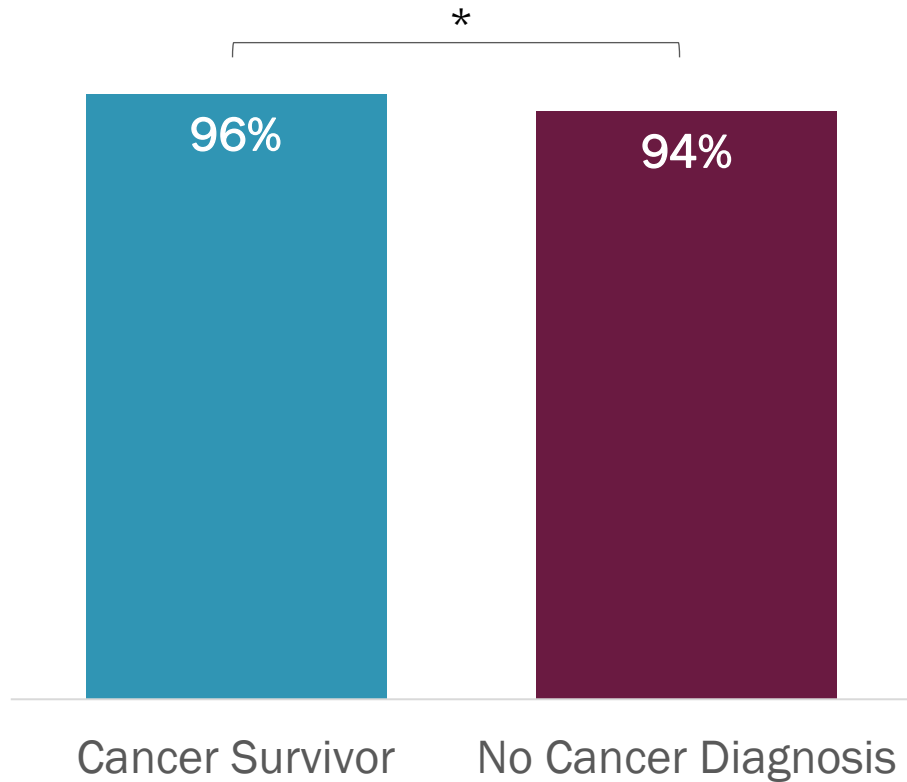
When comparing Vermonters 65+, **cancer survivors** are more likely to report cardiovascular disease and diabetes than **those with no cancer diagnosis**.

Significant difference between cancer survivors and individuals with no cancer diagnosis



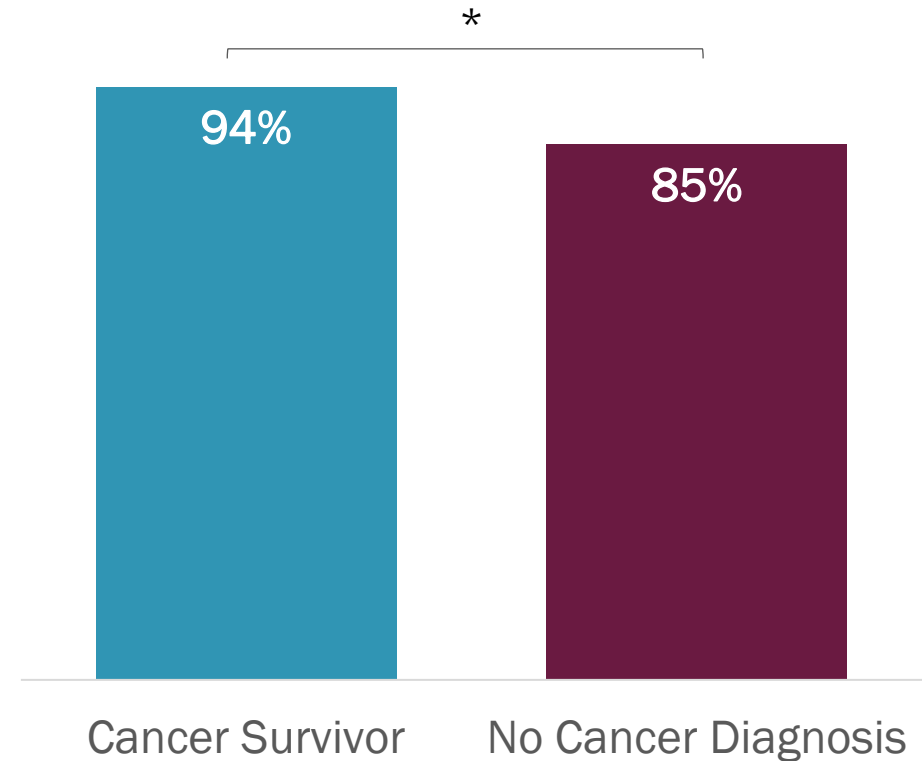
Cancer survivors are more likely to access health systems than those never diagnosed with cancer.

Cancer survivors are more likely to have health coverage than those never diagnosed with cancer.



Vermont Department of Health Source: BRFSS 2018 and 2019

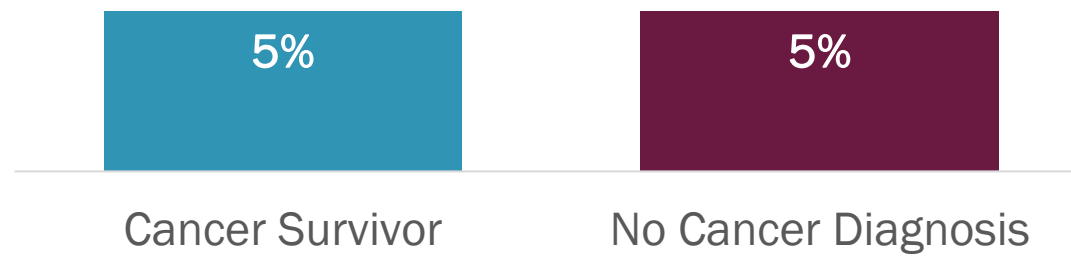
Cancer survivors are more likely to have a primary care provider than those never diagnosed with cancer.



*Indicates significant difference between groups.



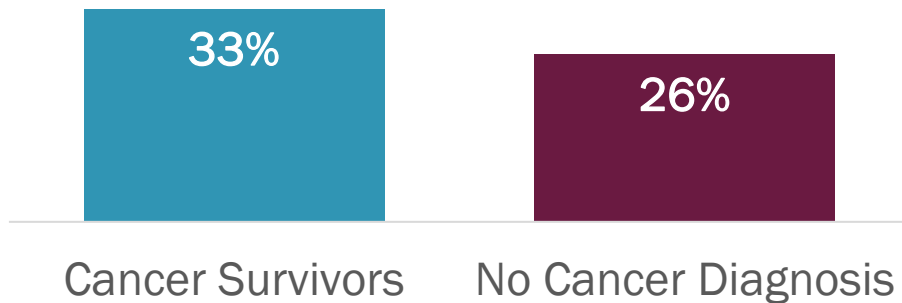
Survivors and **those with no cancer diagnosis** report **not having enough food in the past month at the same rate.**



Prevention



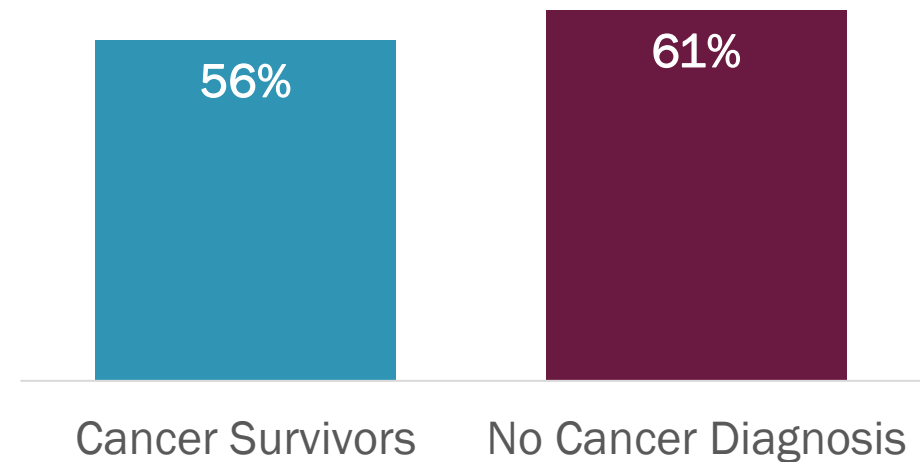
Cancer survivors eat 5 or more servings of fruits and vegetables at a similar rate as those never diagnosed with cancer.



Vermont Department of Health Source: BRFSS 2017 and 2019



Cancer survivors meet physical activity recommendations at a similar rate as those never diagnosed with cancer



All estimates are age adjusted to the 2000 U.S. standard population

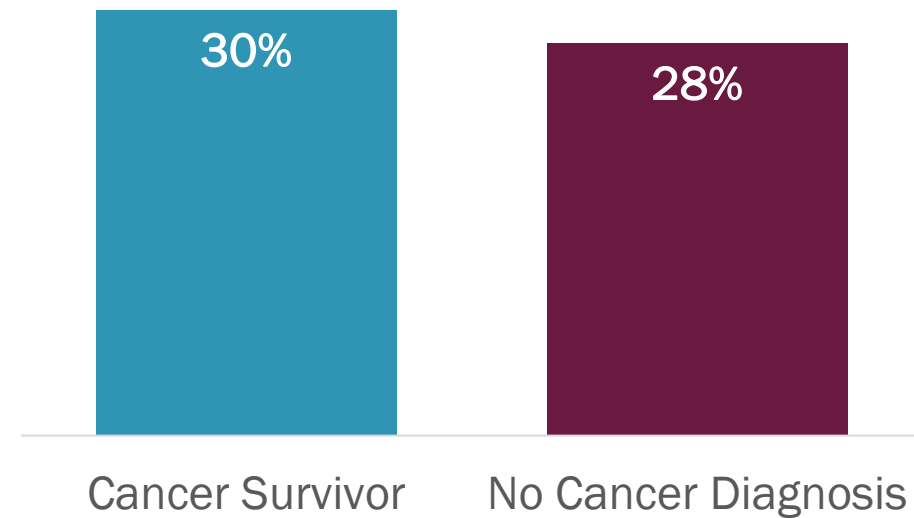
Risk Factors

Cancer survivors drink heavily at a similar rate as those never diagnosed with cancer.



Vermont Department of Health Source: BRFSS 2018 and 2019

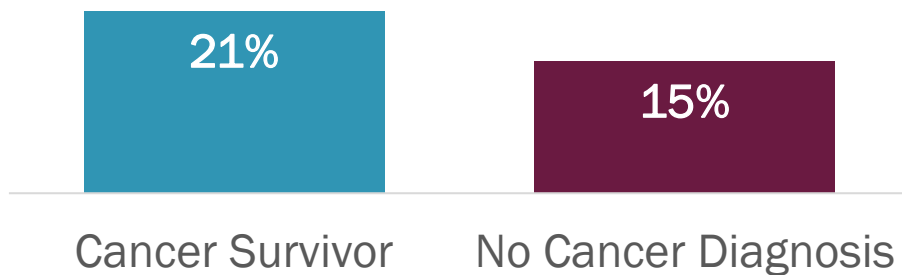
Cancer survivors and those never diagnosed with cancer have obesity at a similar rate.



All estimates are age adjusted to the 2000 U.S. standard population

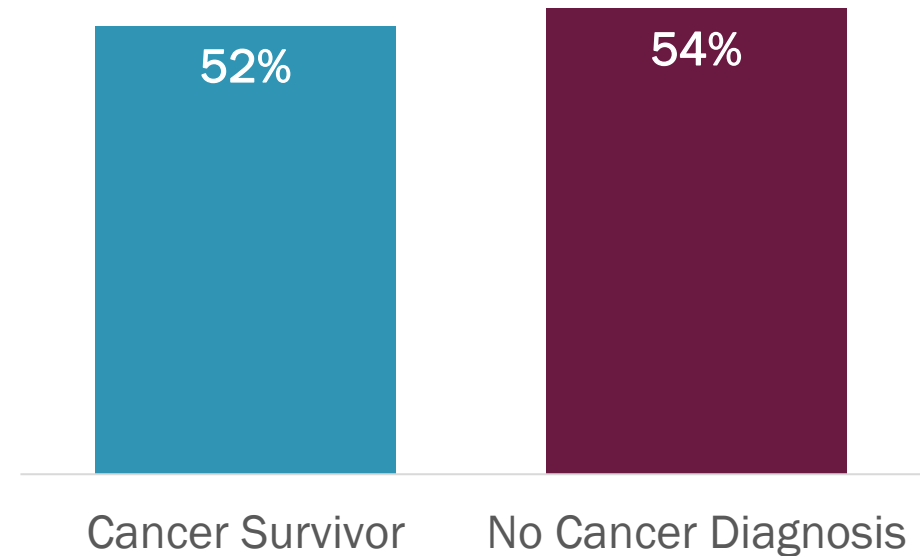
Tobacco Use

Cancer survivors smoke at a similar rate as those never diagnosed with cancer.



Vermont Department of Health Source: BRFSS 2018 and 2019

Cancer survivors and those never diagnosed with cancer who smoke make quit attempts at a similar rate.



All estimates are age adjusted to the 2000 U.S. standard population

Data Notes

Behavioral Risk Factor Surveillance System (BRFSS): Vermont tracks risk behaviors using this telephone survey of adults. The results are used to plan, support, and evaluate health promotion and disease prevention programs. Vermont, along with the 49 other states and three territories, has participated in the BRFSS with the Centers for Disease Control and Prevention (CDC) since 1990. An adult (18 or older) in the household is asked a uniform set of questions. The results are weighted to represent the adult population of the state.

Age Adjustment: Many measures throughout this document are age adjusted. Age adjustment eliminates variation that results from differences in a populations' age distributions. Measures from BRFSS are adjusted for age only if they are Healthy Vermonters 2020 goals. Age adjustment groupings come from those determined by Healthy People 2020.

Acknowledgement: This publication was supported by Grant/Cooperative Agreement Number NU58DP006322-02-02 from the Centers for Disease Control and Prevention. Its contents are solely the responsibility of the authors and do not necessarily represent the official views of the Centers for Disease Control and Prevention.