

Report Timeframe: April 23 to April 29, 2023

Statewide community levels: Low. For this seven-day reporting period, the rate of new COVID-19 cases per 100,000 Vermonters is below 200. New COVID-19 admissions are below 10 per 100,000 Vermonters per day, and the percentage of staffed hospital beds occupied by COVID-19 is below 10%.

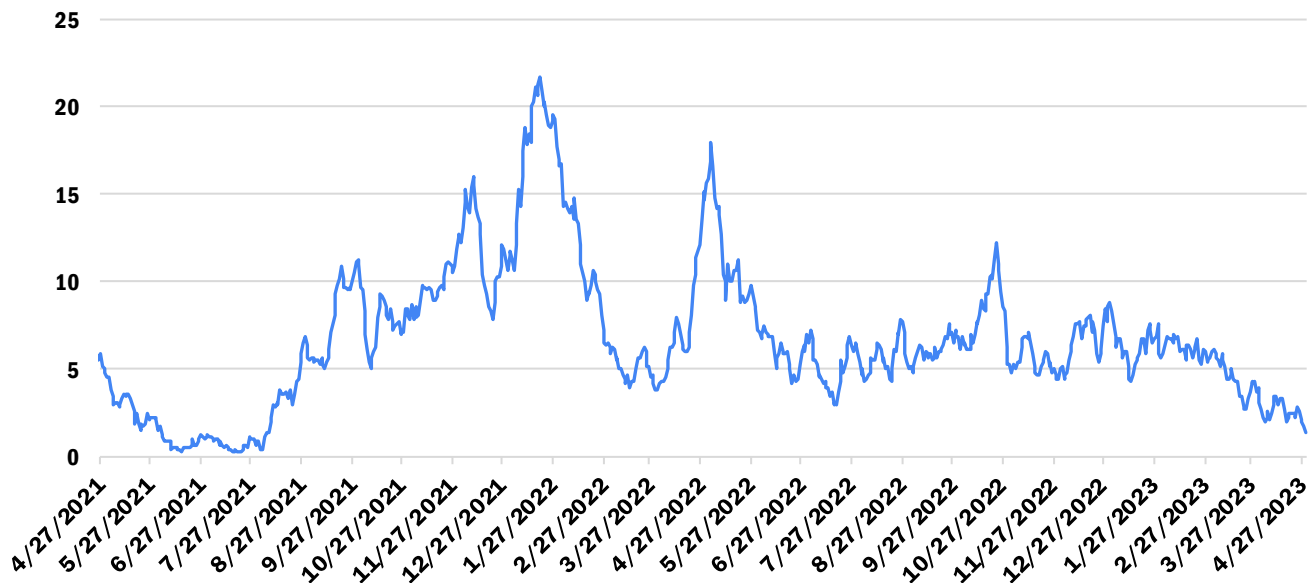
- New COVID-19 cases, last 7 days: 18.59 per 100k (slight decrease from last week)
 - Weekly case count: 116
- New hospital admissions of patients with COVID-19, last 7 days: 1.60 per 100K
 - 10 total new admissions with COVID-19 (decrease from last week)
- Percent of staffed inpatient beds occupied by patients with COVID-19 (7-day average): 1.54% (similar to last week)

Vermont Department of Health recommendations: [Preventing COVID-19 \(healthvermont.gov\)](https://healthvermont.gov/preventing-covid-19)

CDC recommendations: [COVID-19 by County | CDC](https://www.cdc.gov/covid19/by-county/)

Hospitalizations Over Time

Daily Hospitalizations With COVID-19 Diagnosis Seven-Day Rolling Average



Source: U.S. Department of Health and Human Services Unified Hospital Data

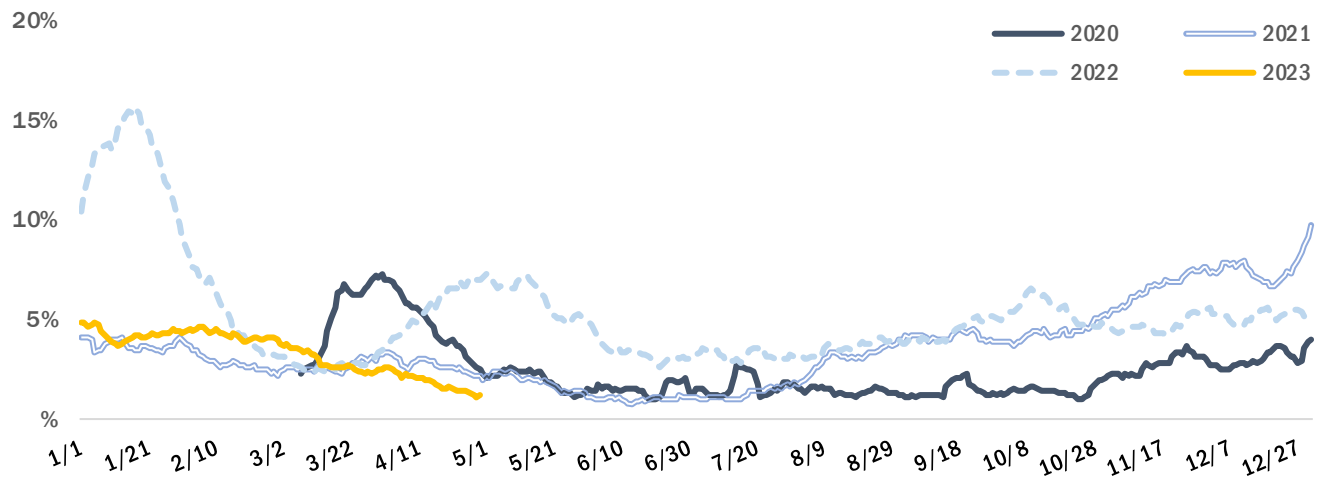
The seven-day rolling average of hospital patients admitted with a laboratory-confirmed COVID-19 was around three during the most recent seven-day period, the lowest sustained average since the summer of 2021. The number is the daily average of the previous seven days; for example, the value for May 28 is the daily average for the days of May 21 through May 27.

Syndromic Surveillance

Vermont is using the Electronic Surveillance System for the Early Notification of Community-based Epidemics (ESSENCE), which provides all individual emergency department visits from participating emergency departments¹, to identify Emergency Department visits for COVID-Like Illness (CLI).

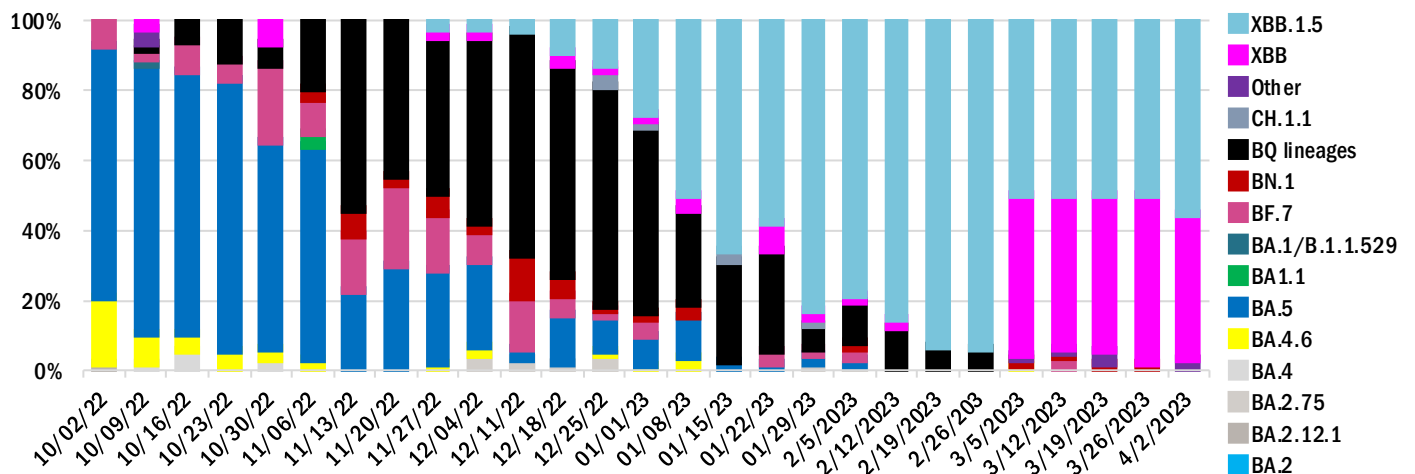
During this reporting period the proportion of emergency visits in participating emergency departments that included CLI was under 2%, lower than the same dates in previous years.

Percent of Emergency Visits with COVID-Like Illness Seven-Day Rolling Average, over Calendar Year



Source: Electronic Surveillance System for the Early Notification of Community-based Epidemics (ESSENCE)

Proportion of sequenced variants



XBB.1.5 and XBB continue to comprise >90% of circulating virus. (Sources: Broad; Aegis; Helix; LabCorp; Quest; Health Department Whole Genome Sequencing program)

¹ All Vermont hospitals and two urgent care clinics are included in ESSENCE.

Wastewater Monitoring



Vermont wastewater districts participating with the National Wastewater Surveillance System (NWSS).

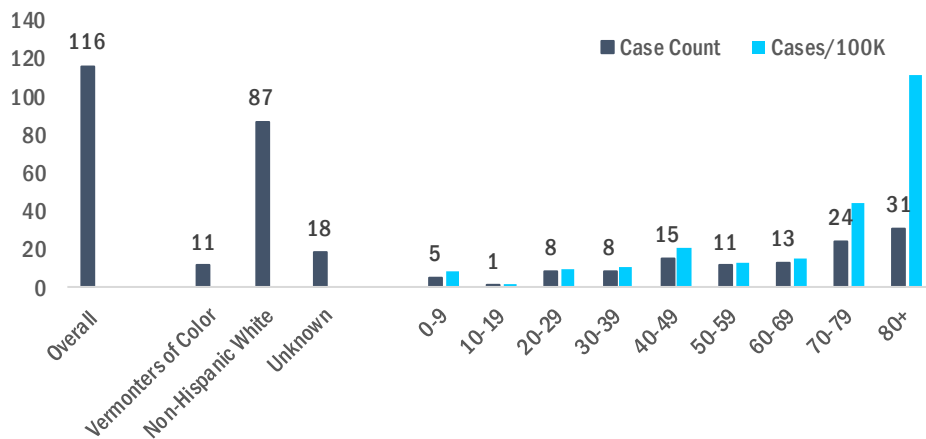
There are a mix of decreases and increases this week.

NWSS Site	15-day % change
Bennington	Increase between 10%-99%
Brighton	Increase between 100%-999%
Essex Junction	Increase between 1%-9%
Ludlow	Decrease between 10%-99%
South Burlington	Decrease between 10%-99%
St. Albans City	Decrease between 10%-99%
St. Johnsbury	Decrease between 10%-99%
Troy / Jay WWTP	Decrease between 10%-99%
Winooski	Increase between 10%-99%

The city of Burlington has suspended its wastewater testing as of April 3rd, 2023.

Identified Cases

Vermont Weekly Case Counts/Rates



Note: Case counts and rates are calculated by *confirmed* and *probable* cases reported to the Health Department.

To calculate rates, counts are divided by 2019 Vermont population estimates for respective category and expressed per 100,000 in each category.

Due to a high number of cases missing race/ethnicity data, rates are not provided for race/ethnicity categories.

COVID-19 Outbreaks Reported April 25 to May 1

For purposes of this report, an outbreak is defined as three or more epidemiologically linked cases of COVID-19, where at least one such case has been laboratory or otherwise clinically confirmed as COVID-19.

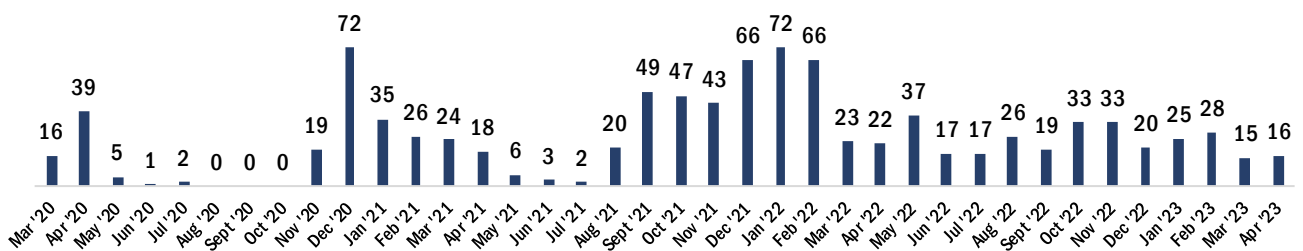
Facility type	New Outbreaks Reported 4/25 – 5/1
Long-term Care (LTC)	2
Non-LTC Healthcare	-
Correctional Facility	-
School/childcare	1
Other	-

County	New Outbreaks Reported 4/25– 5/1
Addison	-
Bennington	-
Caledonia	-
Chittenden	-
Essex	-
Franklin	-
Grand Isle	-
Lamoille	-
Orange	-
Orleans	-
Rutland	-
Washington	2
Windham	-
Windsor	1

Cumulative COVID-19 Deaths as of April 29, 2023

Total	Age group								
	Under 10	10-19	20-29	30-39	40-49	50-59	60-69	70-79	80+
962	1	0	2	11	18	66	98	221	545

Monthly COVID-19 Deaths



Note: Deaths are from registered death certificates and represent preliminary data. A change in death count may represent new deaths, corrections, or other updates.

Data Source: Vermont Department of Health Vital Statistics System.

For more information about this report, please contact john.davy@vermont.gov