

2014 PHYSICIAN CENSUS SUMMARY REPORT

SUMMARY

- There were 1933 physicians providing patient care in Vermont (1852 MDs and 81 DOs) in 2014.
- 38% (729) of the physicians were female, 62% male.
- 39% (763) have worked in Vermont less than 10 years, and 31% (605) have worked in Vermont 20 or more years.
- 32% attended medical school and/or completed residency training at the University of Vermont.

PRIMARY CARE

- 33% (636) worked mainly in primary care, including:
 - 15% (285) in family practice
 - 8% (163) in primary care internal medicine
 - 4% (68) in obstetrics and gynecology
 - 6% (120) in pediatric primary care
- There were 476.9 primary care Full Time Equivalents (FTEs) - 76.1 per 100,000 population statewide

SPECIALTY CARE

67% (1297) worked mainly in specialty care:

- 5% (97) in anesthesiology
- 7% (130) in emergency medicine
- 5% (95) hospitalists
- 10% (192) in specialty internal medicine
- 9% (179) in psychiatry
- 5% (106) in radiology (including tele-radiology)
- 8% (149) in surgery (44 general, 67 orthopedic)
- 18% (349) other specialties (32 neurology, 43 ophthalmology, 55 pathology, 21 urology)

AGE OF PHYSICIANS

- Ages ranged from 28 to 89, with a median age of 50.
- In 7 of 14 counties, at least 35% of the primary care physicians were over age 60
- 24% of specialists were over age 60, including:
 - 40% of psychiatrists
 - 34% of neurologists
 - 30% of ophthalmologists
 - 30% of general surgeons

CHANGES OVER TIME: PRIMARY CARE

As compared with the year 2004:

- There are 2 more primary care physicians, but 1.8 fewer FTEs.
- There was a net decrease of 10.2 FTEs in primary care internal medicine.
- Statewide, primary care FTEs per 100,000 population decreased, from 77.0 to 76.1.
- Outside of Chittenden County, primary care FTEs per 100,000 population decreased, from 72.3 to 71.4.

CHANGES OVER TIME: PRIMARY CARE

As compared with the year 2010:

- There are 8 more primary care physicians, but 15.2 fewer FTEs.
- There was a net loss of 6.4 FTEs in primary care internal medicine.
- Statewide, primary care FTEs per 100,000 population decreased, from 78.6 to 76.1.
- Outside of Chittenden County, primary care FTEs per 100,000 population decreased, from 72.8 to 71.4.

CHANGES OVER TIME: SPECIALTY CARE

As compared with the year 2004:

- There are 321 more specialty care physicians.
- Not counting radiology and pathology*, there are 276 more specialists, and 180.0 more specialty care FTEs.
- FTE increases were especially large in hospitalists, anesthesiology, emergency medicine, and specialty internal medicine.

* Many radiologists and pathologists practice via telemedicine, and FTEs cannot be determined

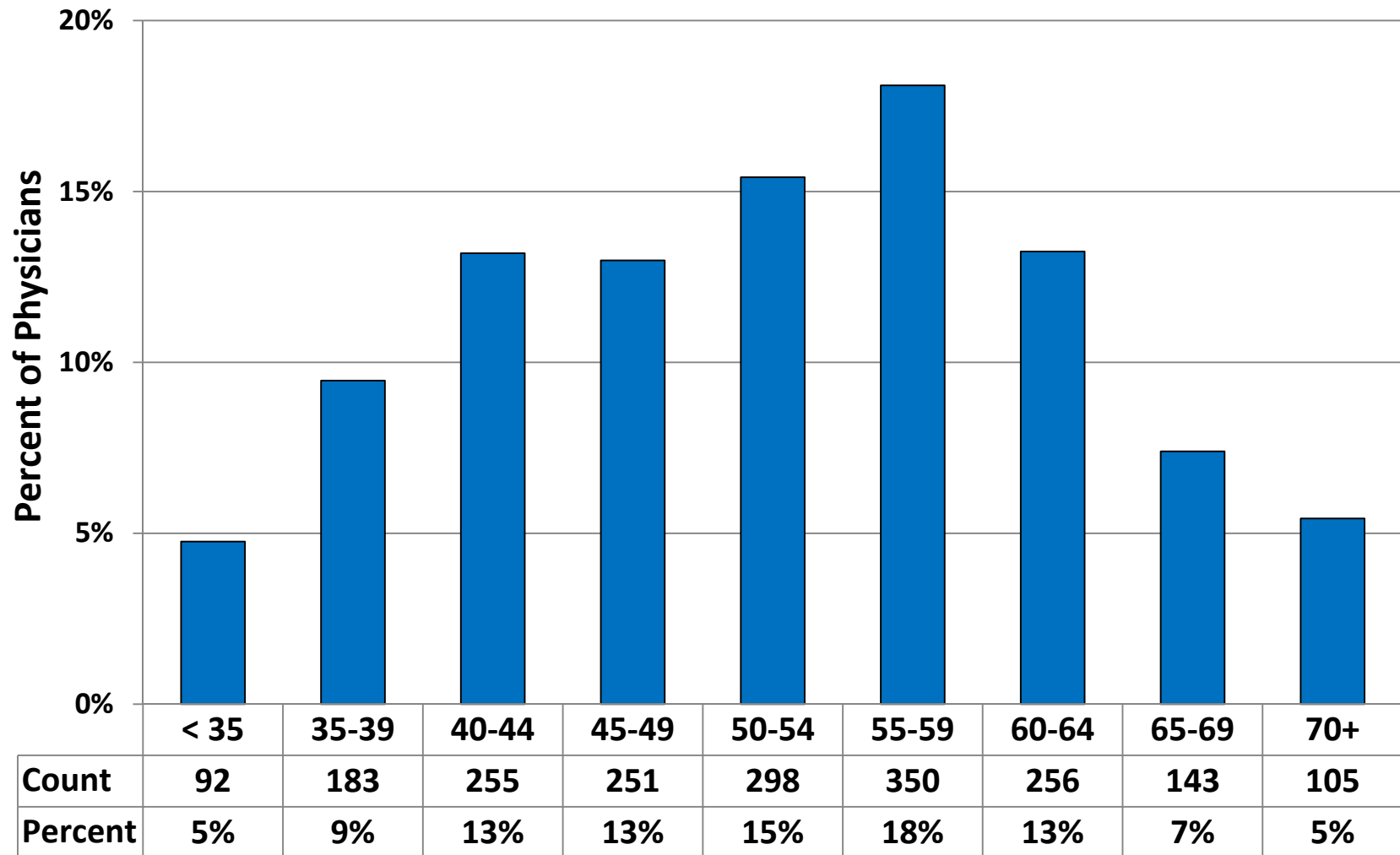
CHANGES OVER TIME: SPECIALTY CARE

As compared with the year 2010:

- There are 48 more specialty care physicians.
- Not counting radiology and pathology*, there are 81 more specialists, but 7.6 fewer specialty care FTEs.
- FTE decreases were especially large in psychology and general surgery.

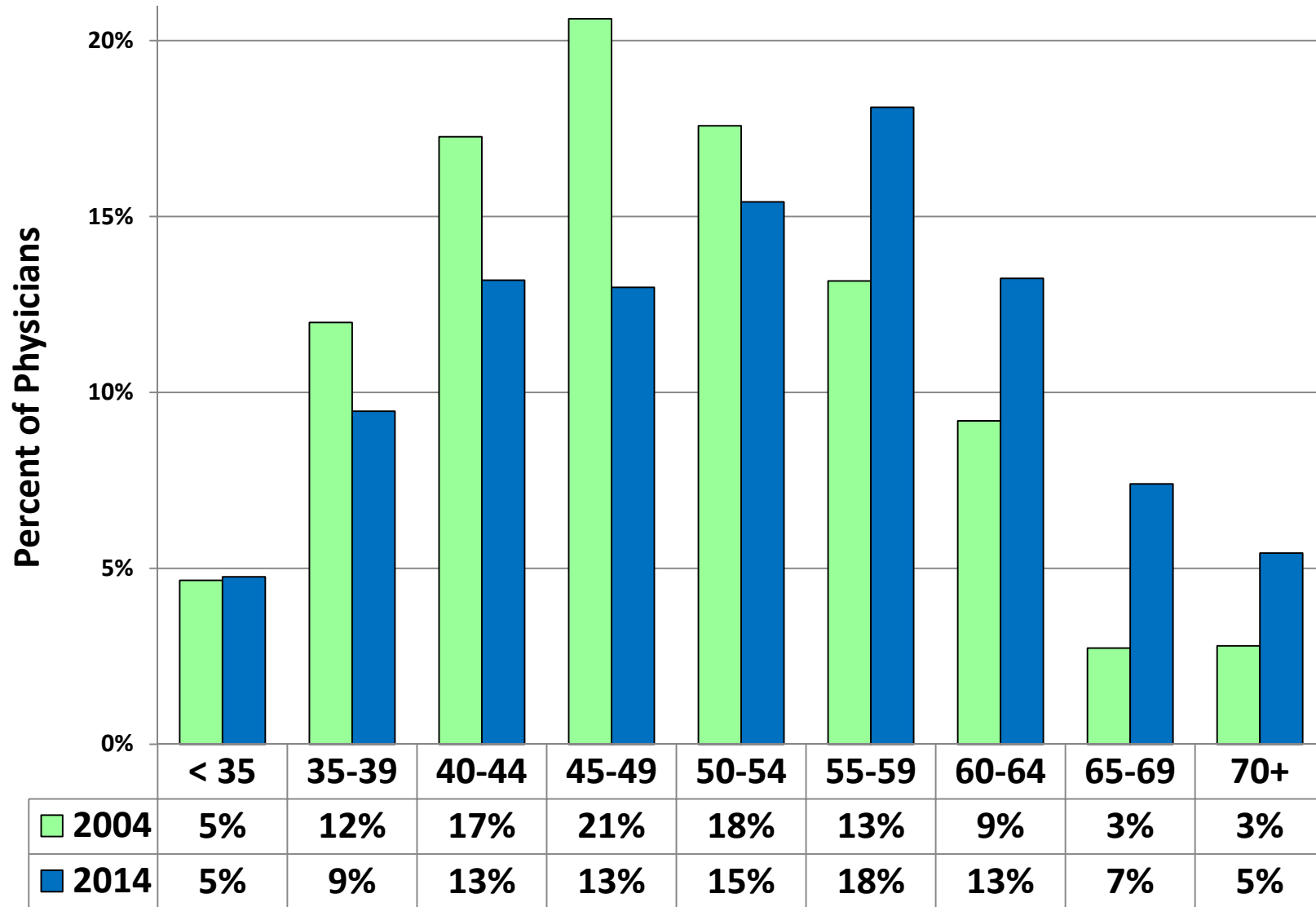
* Many radiologists and pathologists practice via telemedicine, and FTEs cannot be determined

Age Distribution

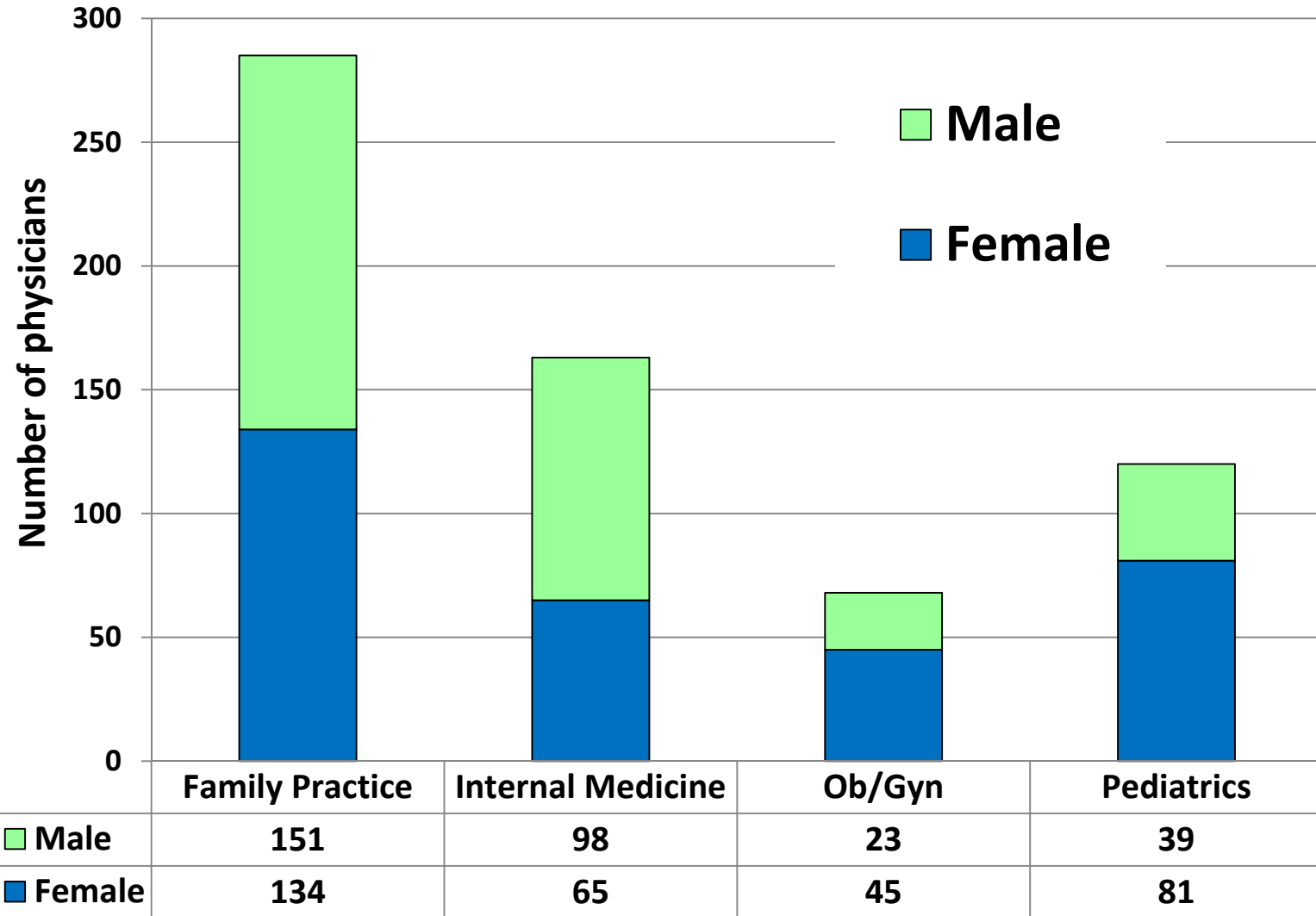


26% of all physicians are over age 60

Age Distribution Over Time: 2014 vs. 2004

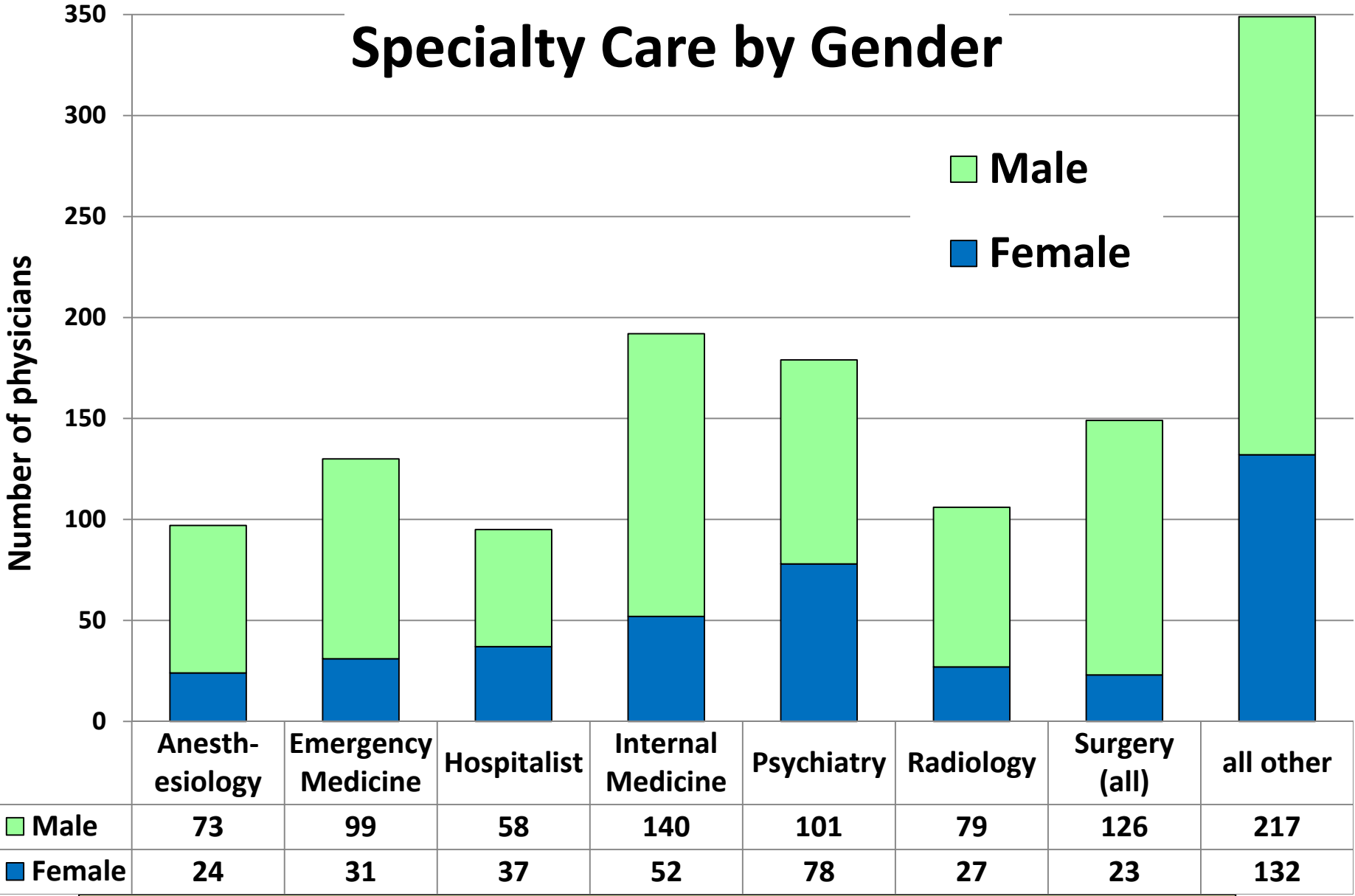


Primary Care by Gender



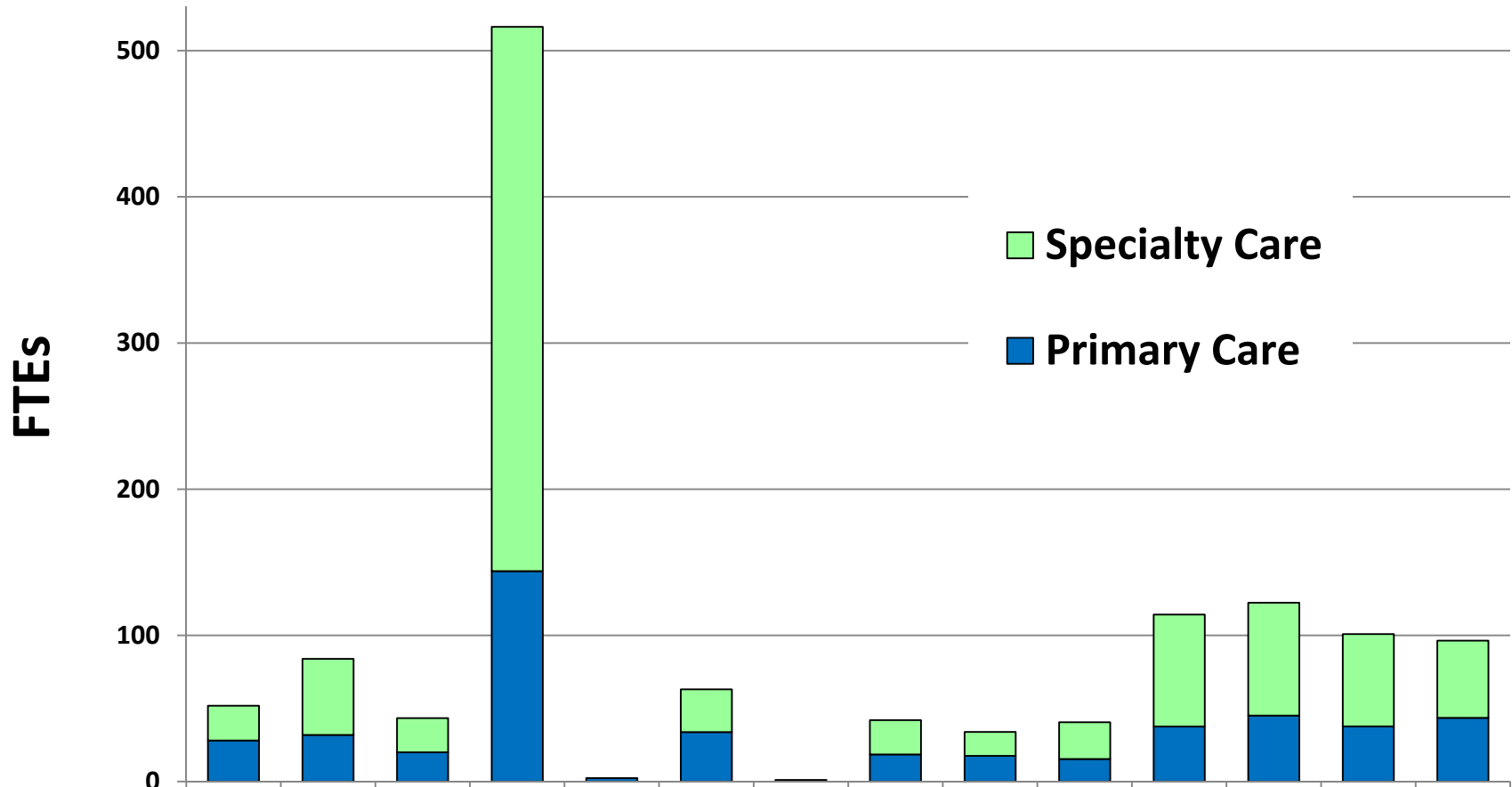
68% of pediatricians and 66% of OB/GYNs are female

Specialty Care by Gender



Most specialty care physicians are male

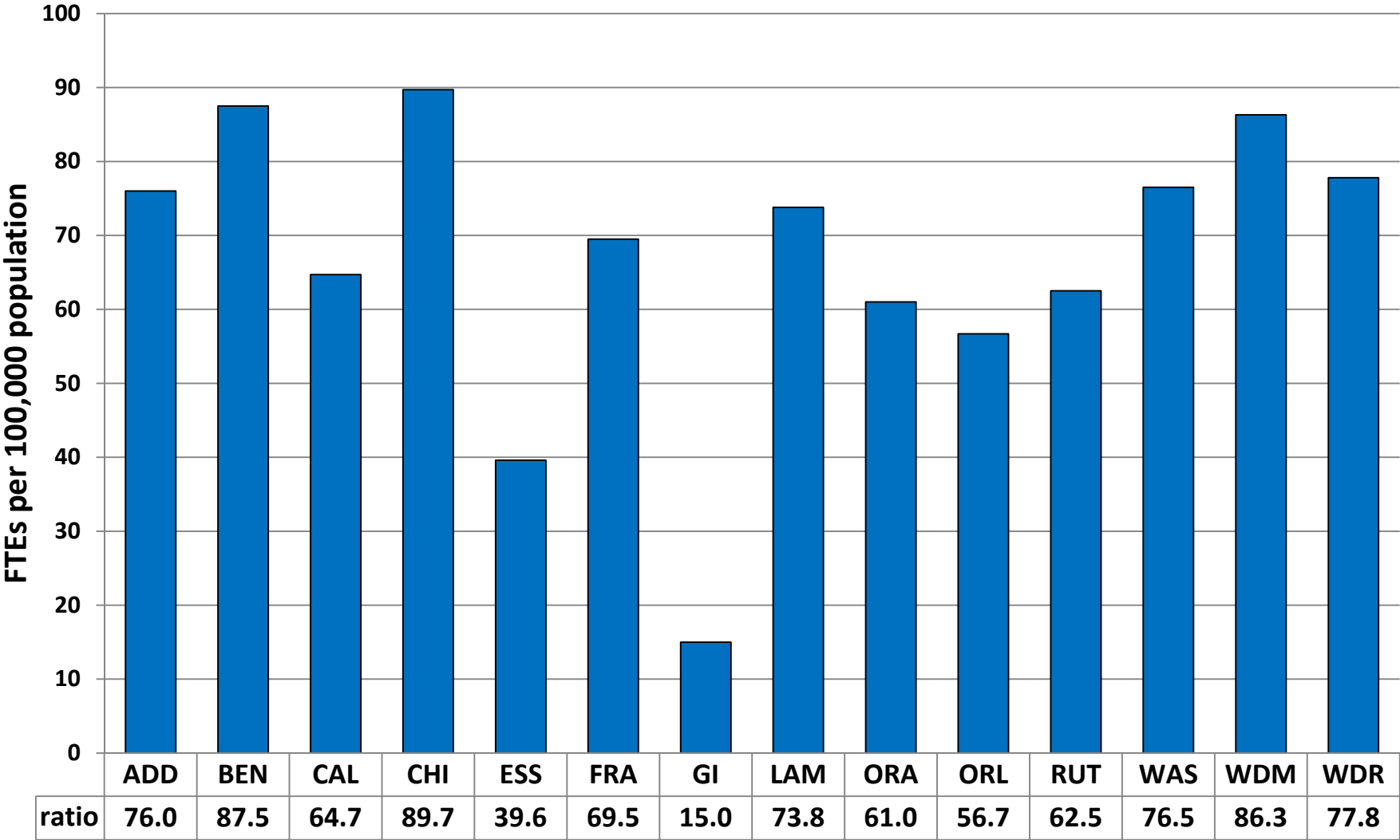
Full Time Equivalents (FTEs) by County



	ADD	BEN	CAL	CHI	ESS	FRA	GI	LAM	ORA	ORL	RUT	WA S	WD M	WD R
Specialty Care	23.8	52	23.4	372	0	29.3	0	23.5	16.3	25.2	76.6	77.2	63.2	52.8
Primary Care	28.1	31.9	20	144	2.4	33.8	1.1	18.5	17.6	15.4	37.6	45.1	37.7	43.6

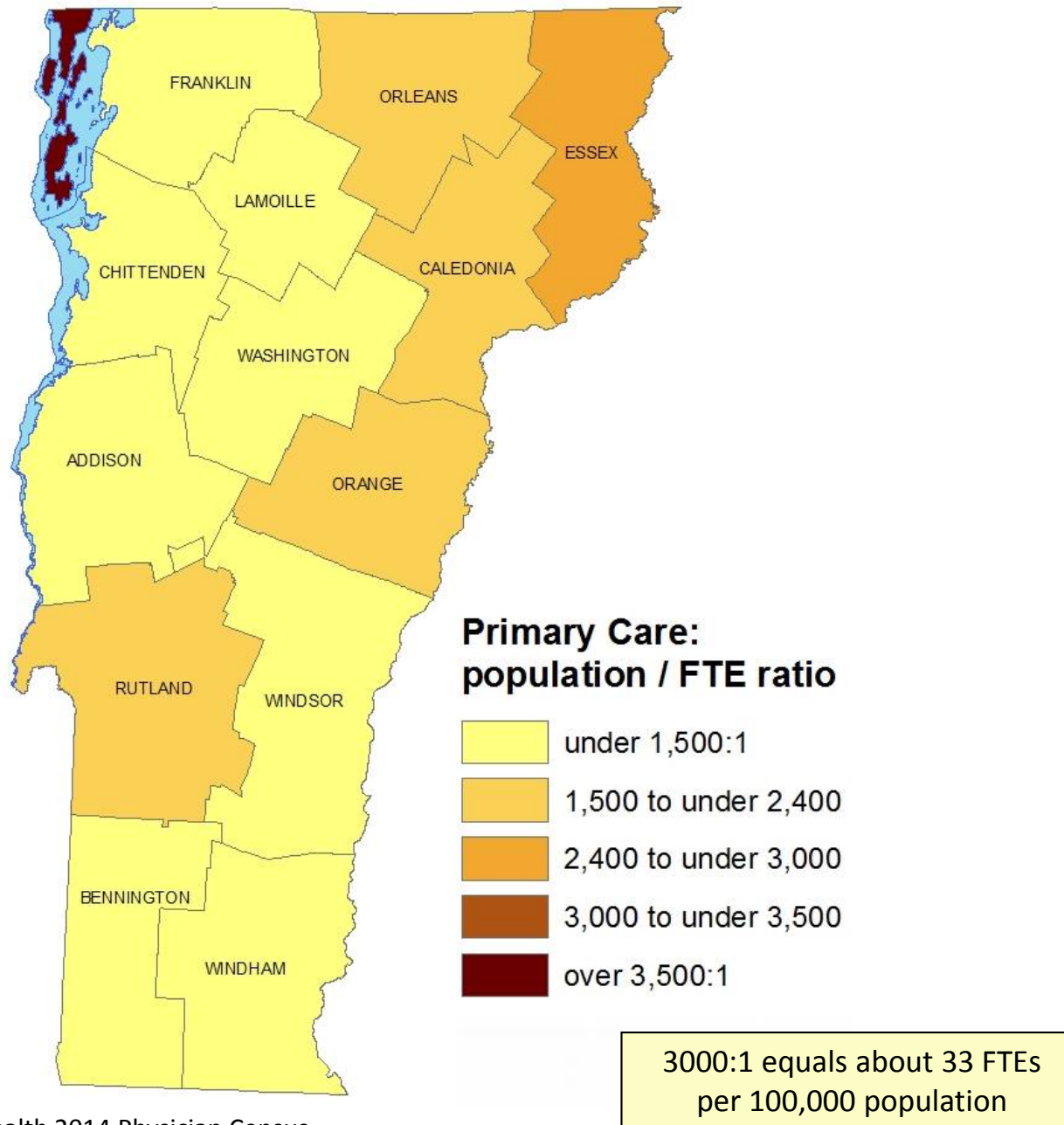
Physicians are highly concentrated in Chittenden County

Primary Care FTE to Population Ratios by County

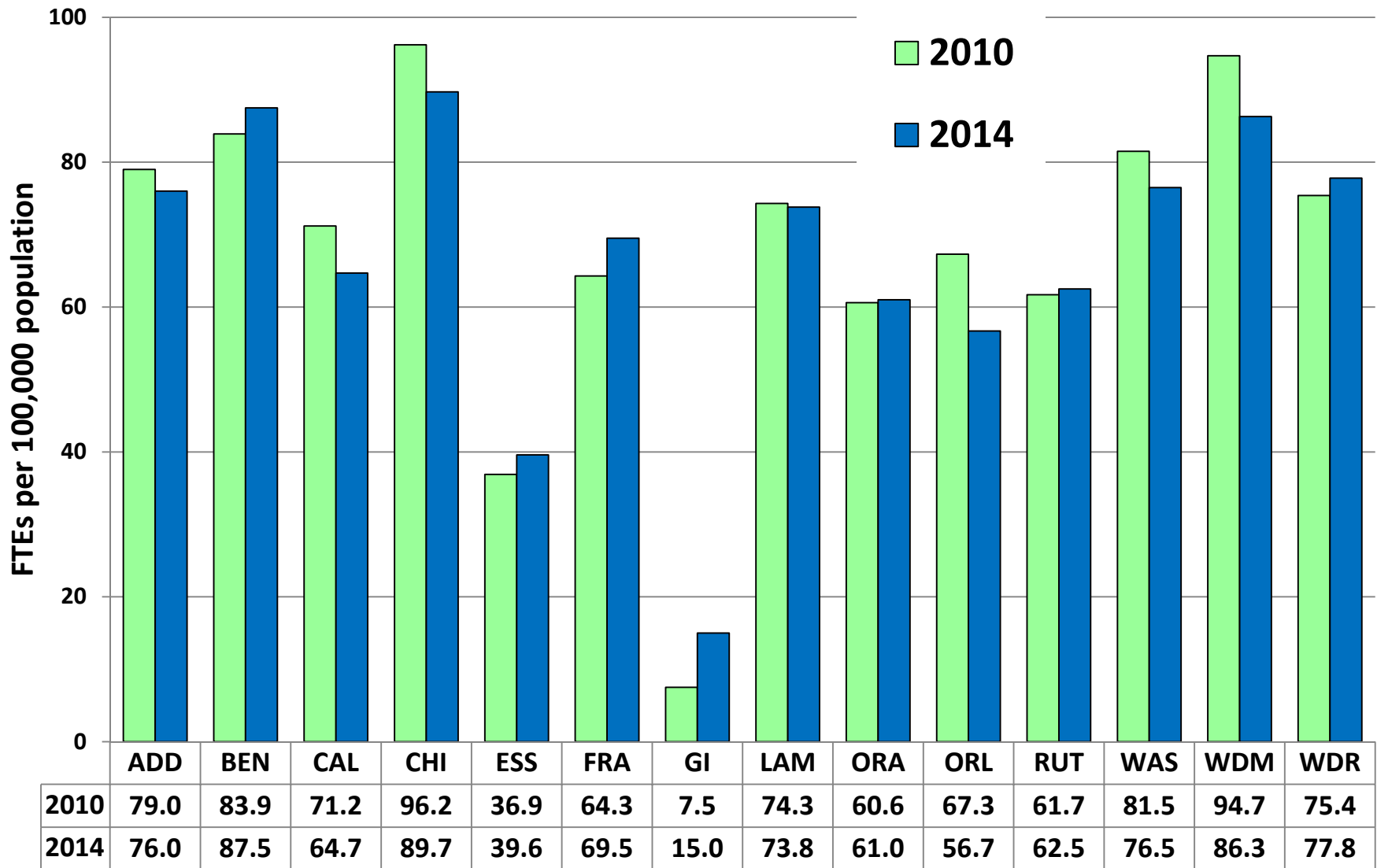


Several counties have a shortage of primary care physicians relative to their population

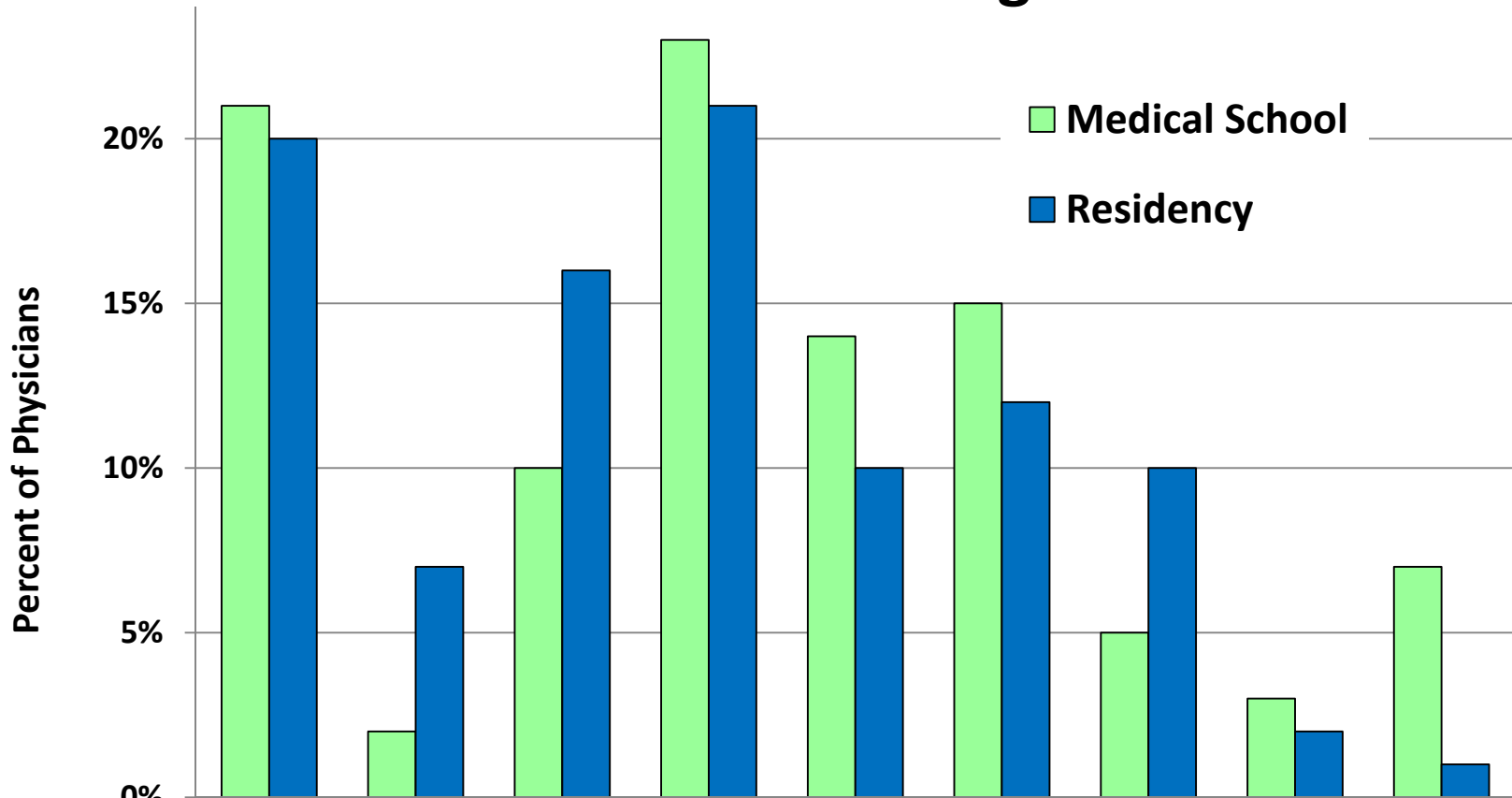
2014 Primary Care Physicians by County



Primary Care FTE to Population Ratios Over Time



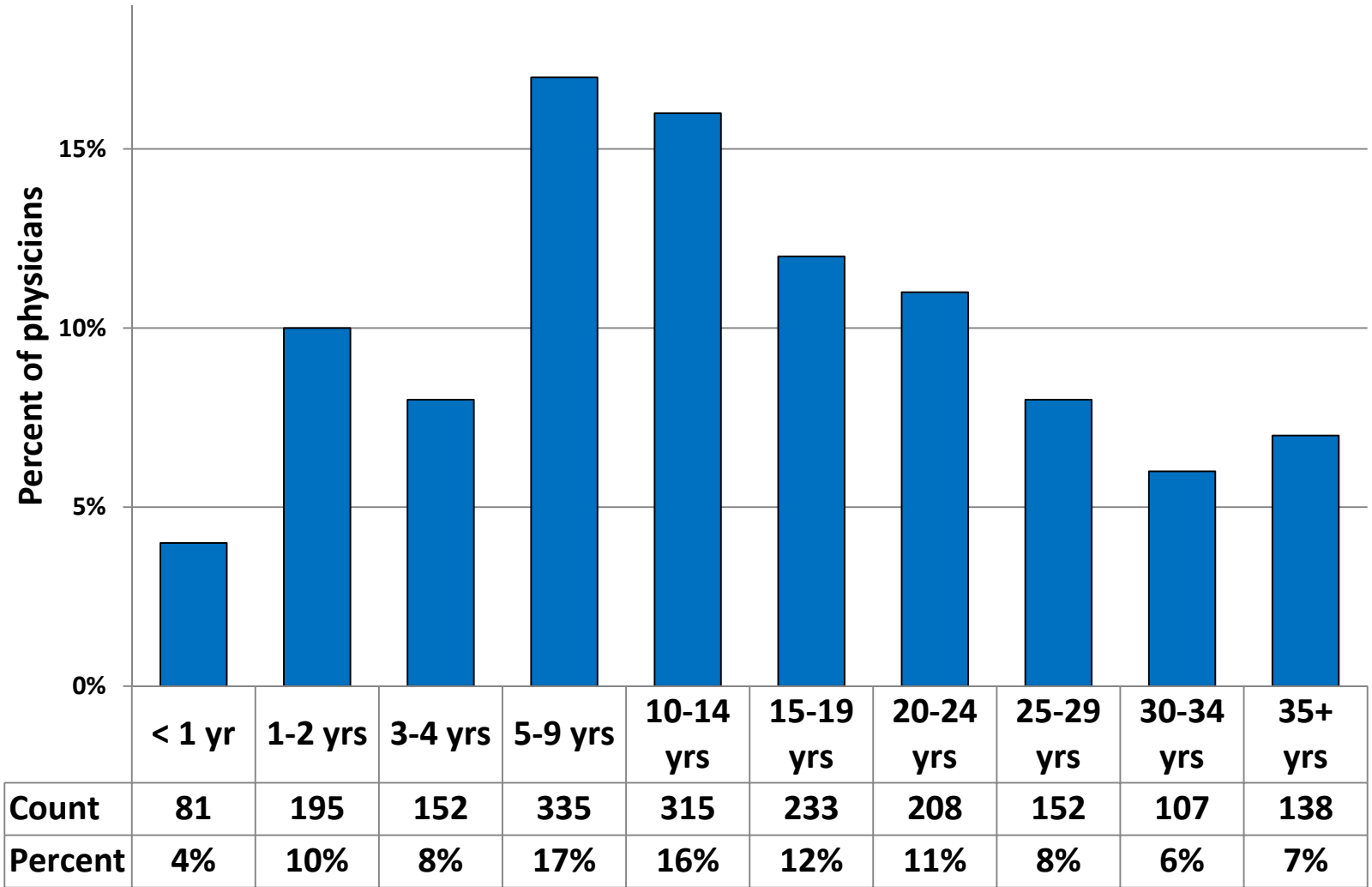
Location of Training



	VT	NH	New England	Mid Atlantic	South	Central	West	Canada	Other Foreign
Medical School	21%	2%	10%	23%	14%	15%	5%	3%	7%
Residency	20%	7%	16%	21%	10%	12%	10%	2%	1%

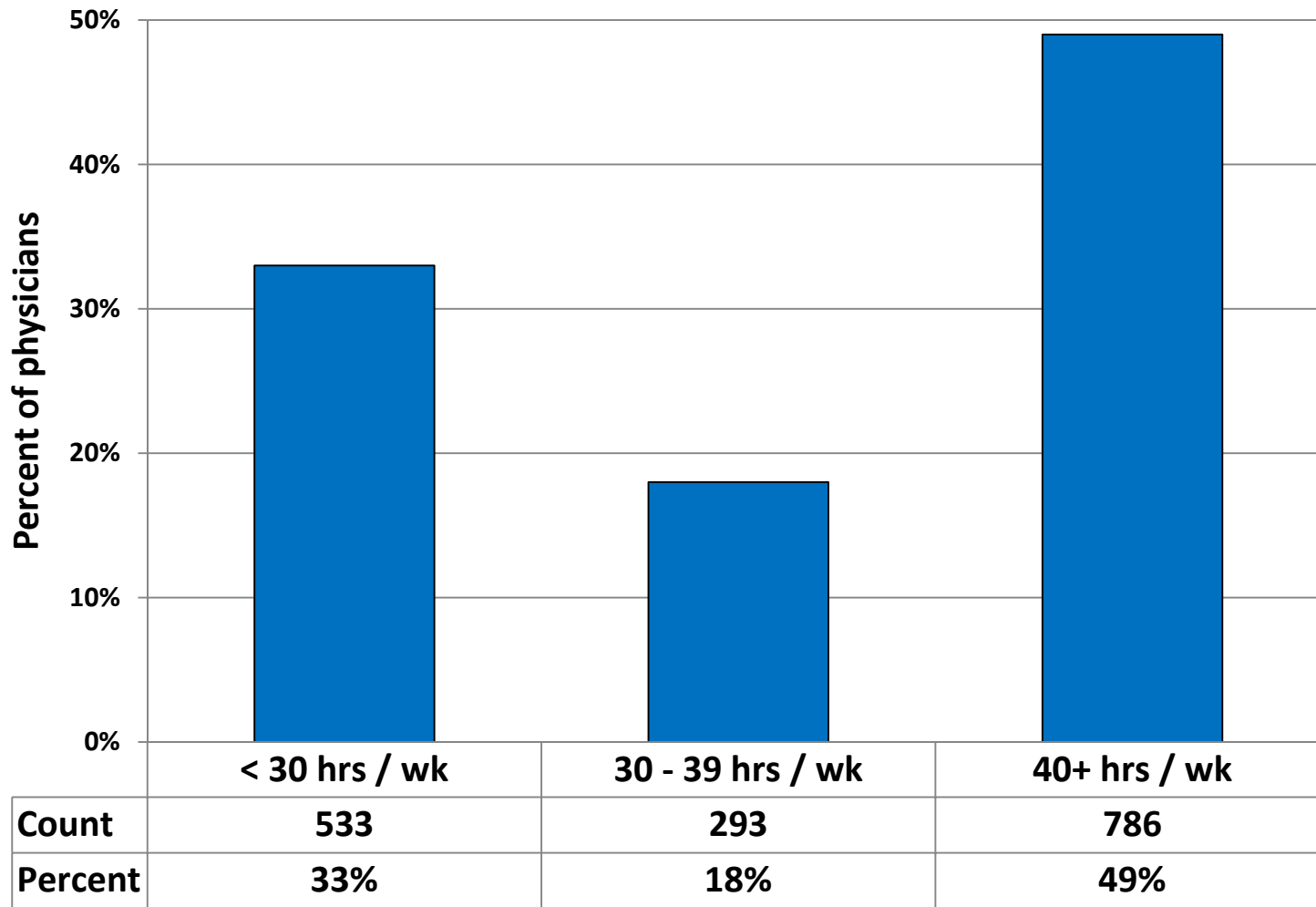
32% of physicians attended medical school and/or completed residency training at UVM

Years Worked in Vermont



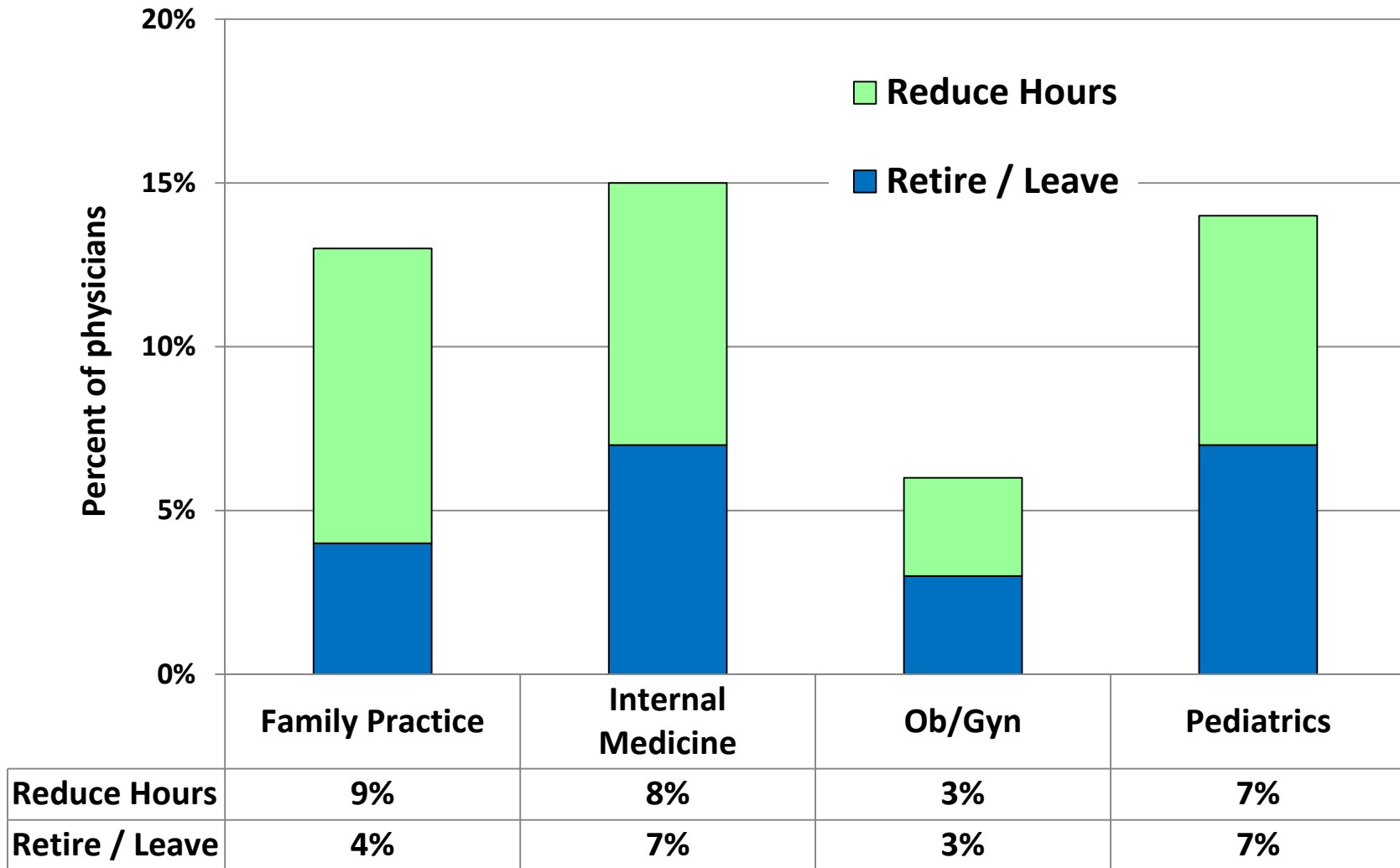
51% of the physicians have been in practice (anywhere) 20 years or more

Patient Care Hours Per Week

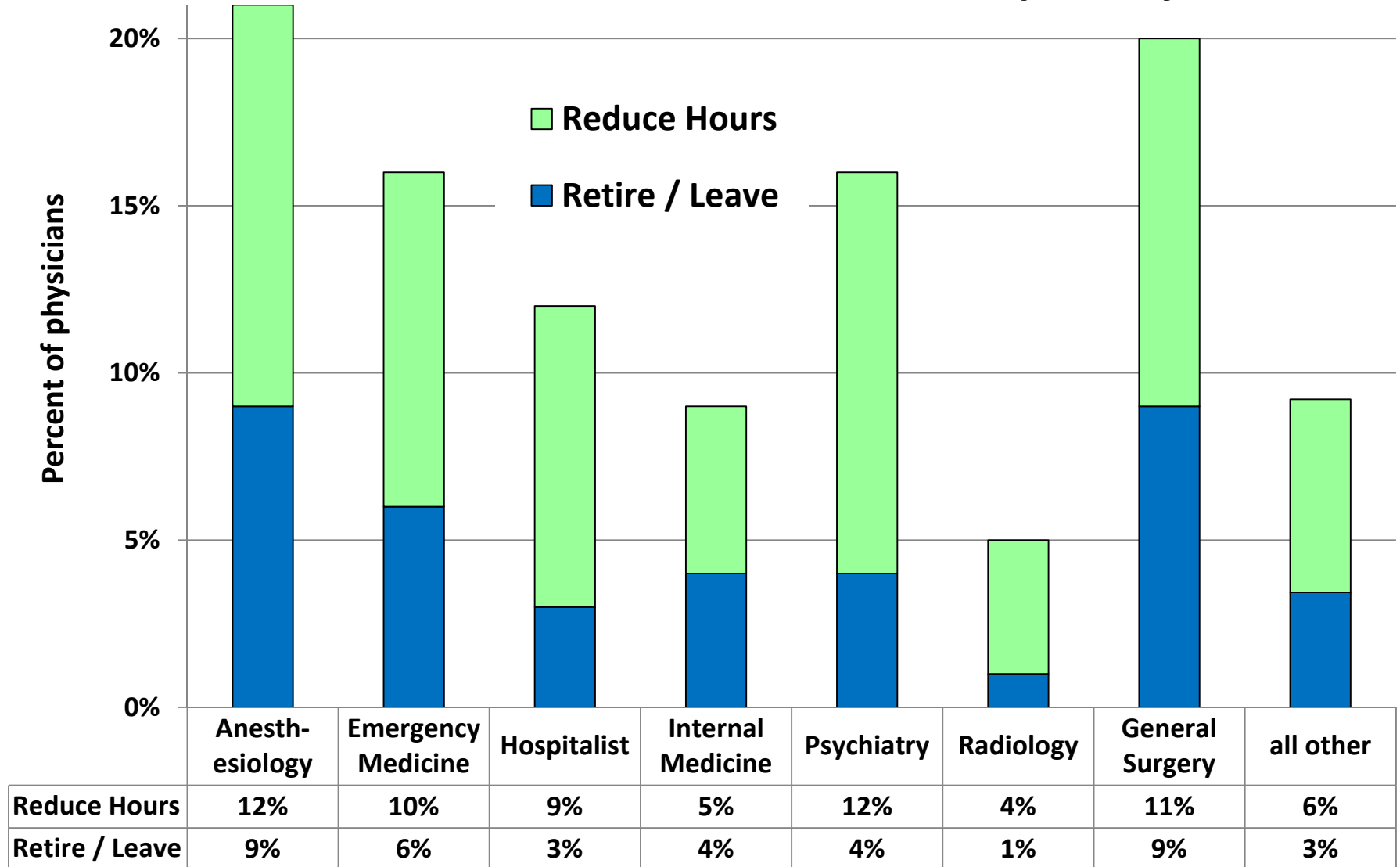


Average patient care hours per week: 34 overall, 27 for ages 65 and older. 48% of males, and 38% of females, provide patient care 40+ hours per week.

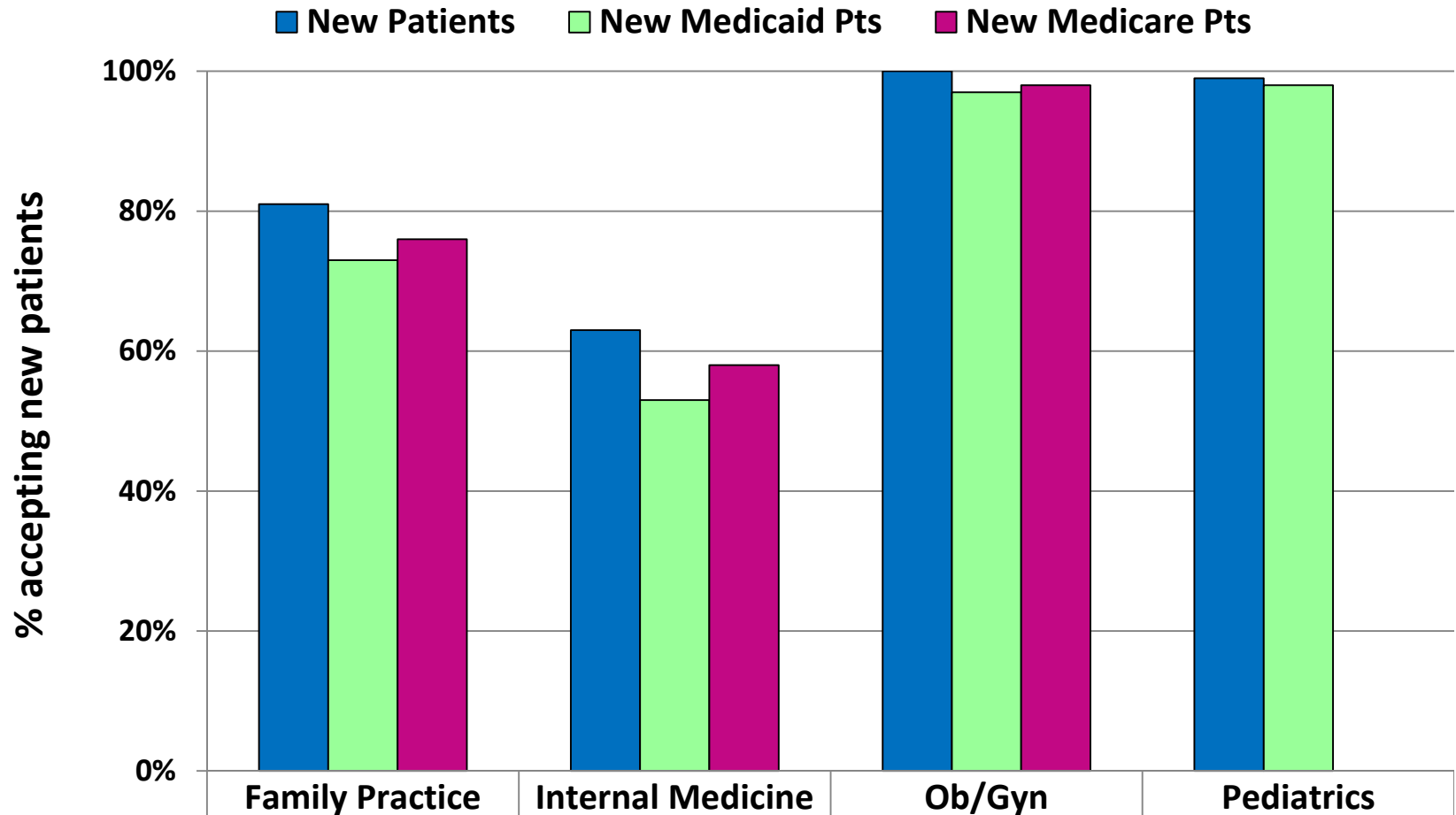
Planning to Retire or Reduce Hours Worked in Vermont Within 12 Months – Primary Care



Planning to Retire or Reduce Hours Worked in Vermont Within 12 Months – Specialty Care



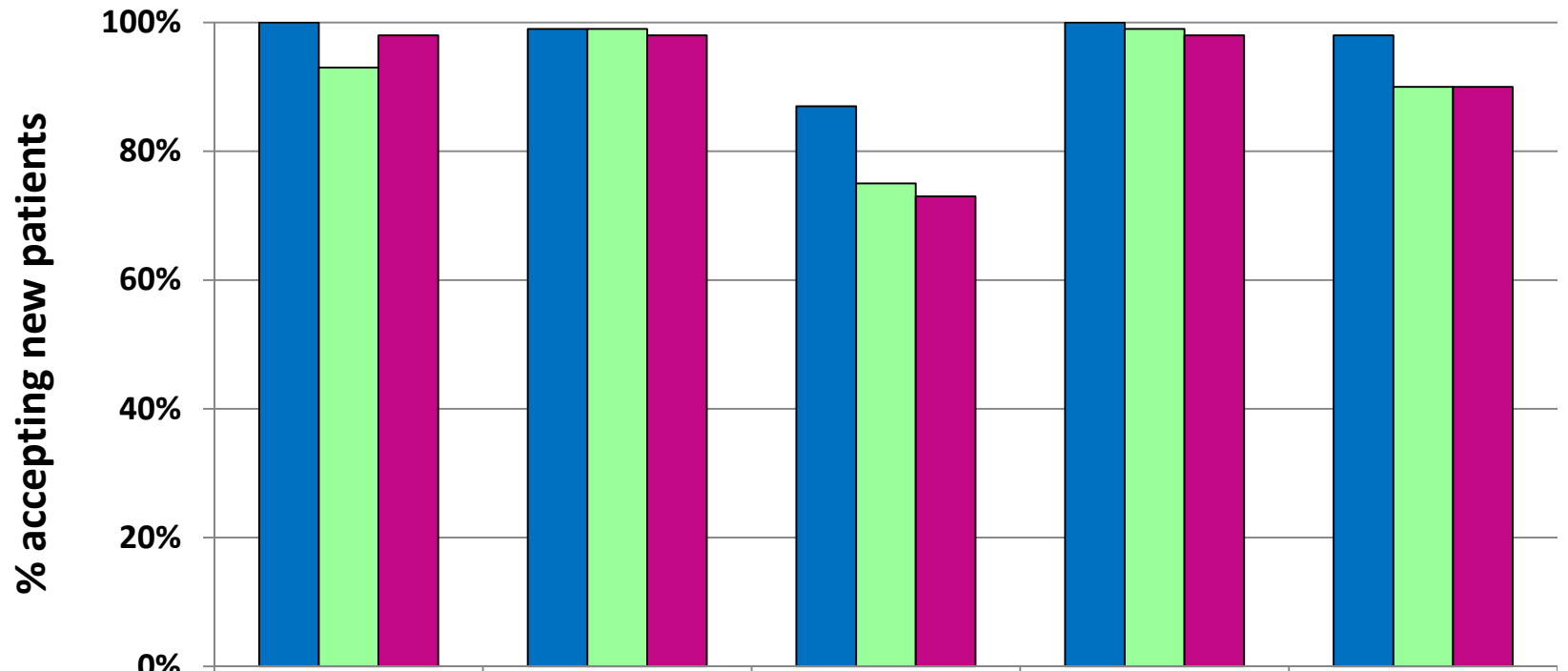
Accepting New Patients – Primary Care



	Family Practice	Internal Medicine	Ob/Gyn	Pediatrics
New Patients	81%	63%	100%	99%
New Medicaid Pts	73%	53%	97%	98%
New Medicare Pts	76%	58%	98%	

Accepting New Patients – Specialty Care

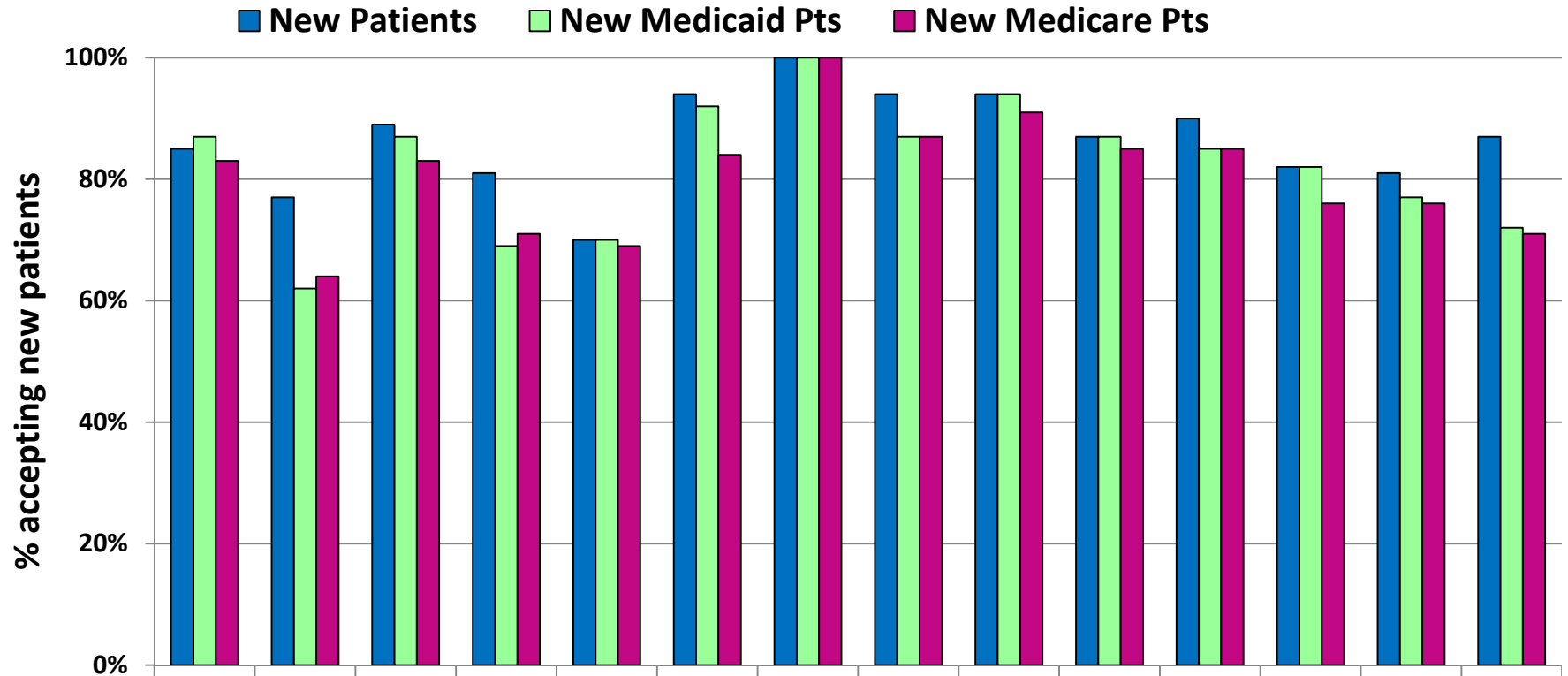
■ New Patients ■ New Medicaid Pts ■ New Medicare Pts



	Anesth- esiology	Internal Medicine	Psychiatry	Surgery (all)	all other
New Patients	100%	99%	87%	100%	98%
New Medicaid Pts	93%	99%	75%	99%	90%
New Medicare Pts	98%	98%	73%	98%	90%

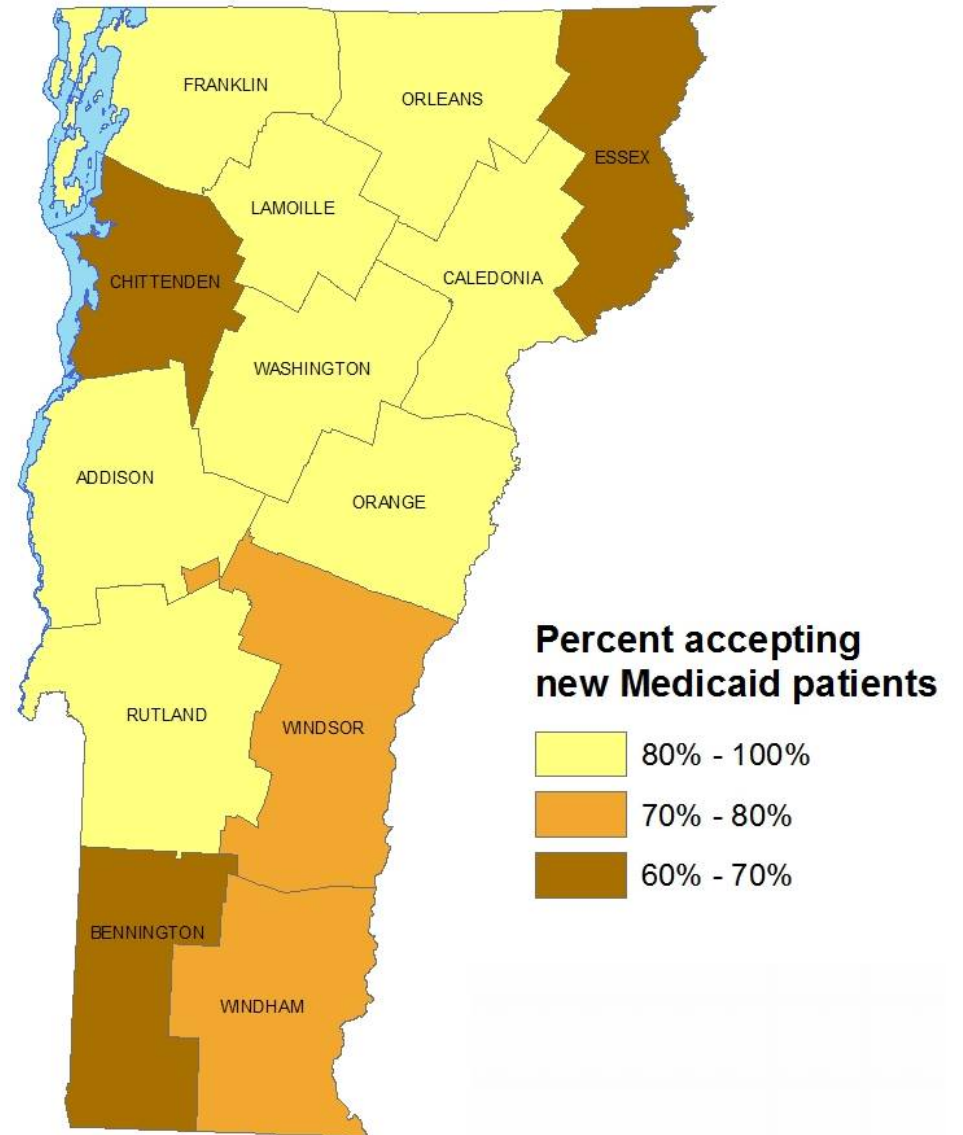
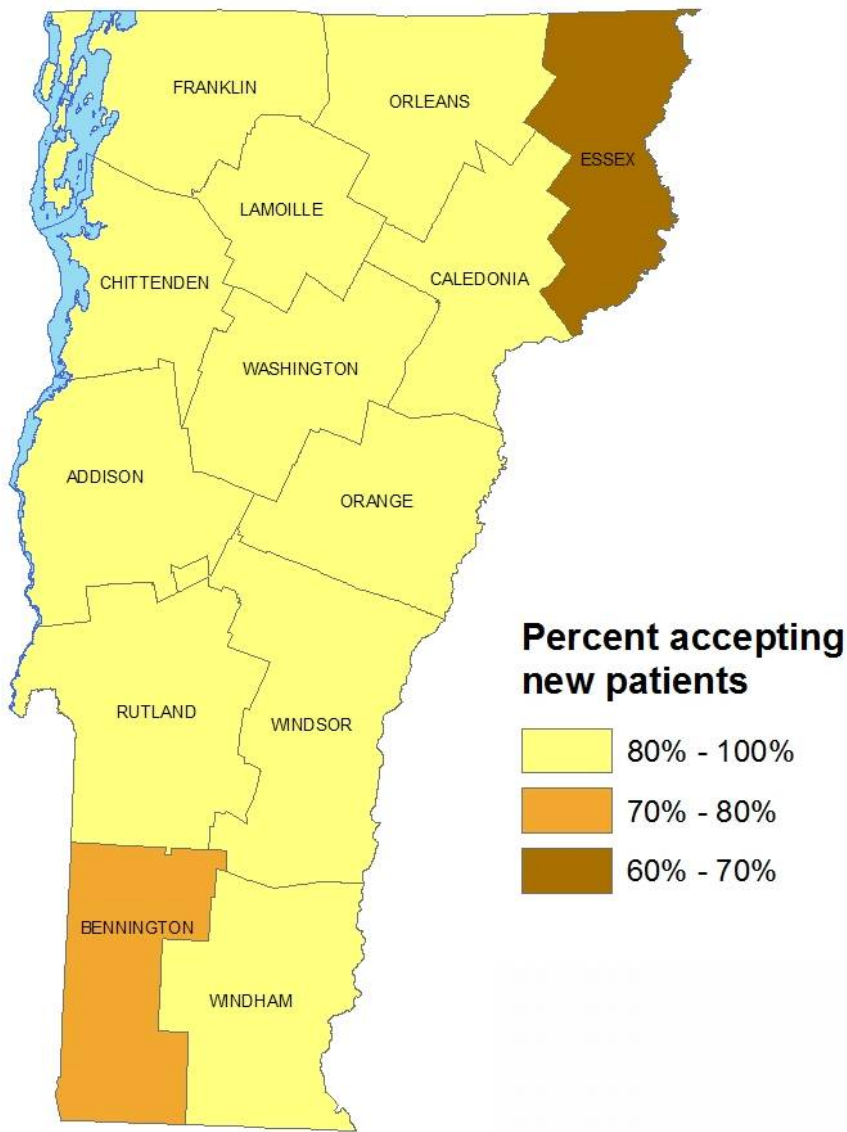
Office settings only. Emergency medicine, pathology and radiology excluded.

Accepting New Patients – Primary Care, by County



	ADD	BEN	CAL	CHI	ESS	FRA	GI	LAM	ORA	ORL	RUT	WAS	WDM	WDR
New Patients	85%	77%	89%	81%	70%	94%	100%	94%	94%	87%	90%	82%	81%	87%
New Medicaid Pts	87%	62%	87%	69%	70%	92%	100%	87%	94%	87%	85%	82%	77%	72%
New Medicare Pts	83%	64%	83%	71%	69%	84%	100%	87%	91%	85%	85%	76%	76%	71%

Primary Care Physicians: New Patients, by County



Comparison of Selected Physician Data, 2000-2014

	2000	2004	2008	2010	2014
Total active * physicians	1480	1612	1833	1877	1933
Percent female	26%	29%	31%	33%	38%
Primary care physicians	585	634	634	628	636
% accepting new patients	80%	81%	80%	83%	82%
accepting new Medicaid patients	73%	70%	69%	72%	76%
accepting new Medicare patients	74%	71%	69%	69%	72%
Primary care physician FTEs	472.2	478.7	498.2	492.1	476.9
PC Internal Medicine FTEs	128.5	124.5	126.5	120.7	114.3
PC FTEs per 100,000 Population	77.6	77.0	80.2	78.6	76.1
Specialist physicians	895	978	1199	1249	1297
Specialist physician FTEs **	621.3	656.1	818.1	843.7	836.1

* providing patient care in Vermont

** FTEs not computed for pathology and radiology

For more information, contact:

- Moshe Braner
Research and Statistics
Dept. of Health
108 Cherry St.
Burlington VT 05401
- (802) 865-7703
- Moshe.Braner@vermont.gov