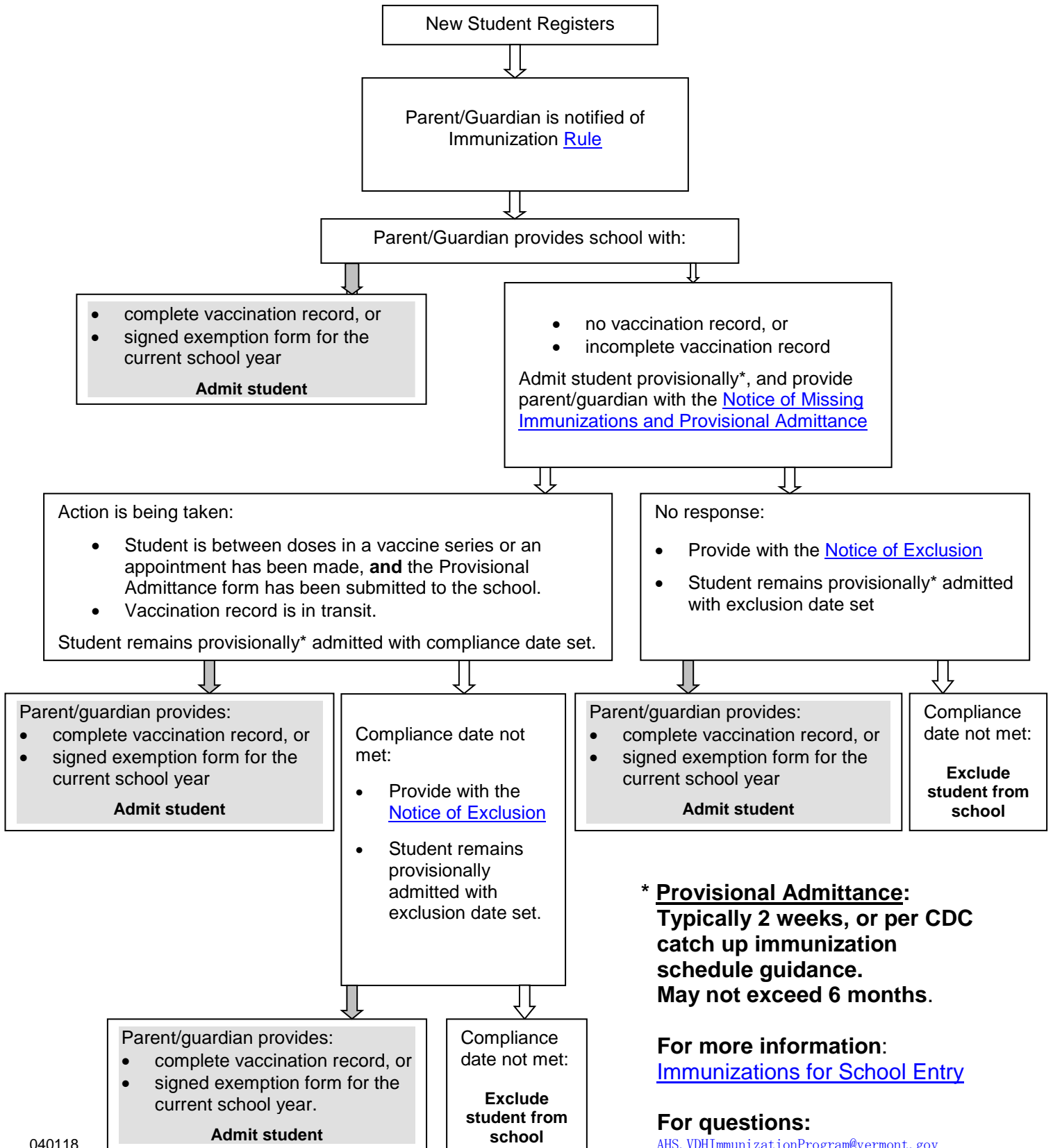


Procedural Flow Chart for Compliance with Vermont’s Immunization Rule, 18 V.S.A. § 1123



*** Provisional Admittance:**
Typically 2 weeks, or per CDC catch up immunization schedule guidance.
May not exceed 6 months.

For more information:
[Immunizations for School Entry](#)

For questions:
AHS.VDHImmunizationProgram@vermont.gov