

VERMONT DEPARTMENT OF HEALTH LABORATORY

Physical: 359 South Park Drive, Colchester, VT 05446

Mailing: PO Box 1125, Burlington, VT 05402-1125

1-800-660-9997 (VT only) or 1-802-338-4724

Monday through Friday 7:45 am – 4:30 pm

Thank you for purchasing a Radon in Water test (Kit RC).

What will I need to collect the sample? The sampling kit includes:

Two 40 mL glass vials

Water Sample Collection Information Form (CHEM 202).

Where do I sample? Homeowners: To check untreated well water, bypass any sample treatment that may be present (e.g. water softener); to check treated drinking water, sample from a kitchen or bathroom faucet. **Regulated Water Systems:** Sample at the point of entry to the distribution.

Sample Collection Instructions

1. Prepare

- Do not touch the inside of the cap or mouth of the sample vials with your fingers.
- Remove aerator/strainer from faucet, if possible.
- Let the cold water run for 3-5 minutes at full flow before taking the samples.

2. Collect

- Reduce to low flow and fill both vials until overflowing (from the same tap).
- Tighten the screw cap firmly to prevent leakage.
- Turn vials over and check for bubbles by tapping gently. Repeat sample collection if air bubbles of any size are present.
- Fill out the required *Water Sample Collection Information Form (CHEM 202).*
- Include date and time the sample was collected; describe any water treatment in submitter remarks section (e.g. water softener).

3. Return

- Wrap vials with paper towels and secure with rubber band to prevent breakage.
- Return samples within **48 hours** of collection. Samples can be mailed or delivered to the lab during normal business hours Mon-Thurs or before 3:30 pm on Friday.
- If mailing sample, collect the sample just prior to your local post office's pick-up time and verify a 48 hour delivery time (M-F) to the laboratory. Mail to:
PO Box 1125, Burlington, VT 05402-1125.

Can the laboratory reject or qualify my sample?

Yes. Possible reasons can include submitting a sample that contains air bubbles or a gap between water and the cap, using a container other than the one provided, incomplete water collection information, or if the sample is received more than **48 hours** after time of collection.

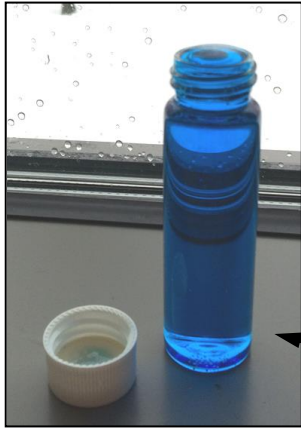
When can I expect my test results?

Test results will be mailed about 7-10 business days after the water sample is received.

Additional information can be found at <http://healthvermont.gov/health-environment/drinking-water/radioactive-elements>

Example Pictures

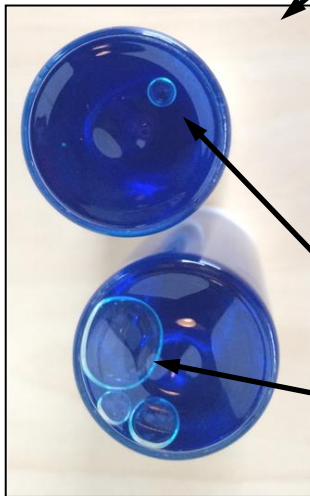
1. Prepare



- Do not touch inside the cap or mouth of the vials.
- Let the cold water flush at high flow for 3-5 minutes.
- Return water to medium flow before collecting the sample.

Examples dyed blue for illustration purposes only.

2. Collect



- Fill both vials until overflowing and cap. Invert and check for air bubbles (see picture at left).
- If air bubbles of any size are found, start again.
- Fill out paperwork (*CHEM 202*) including date and time sample was collected.

Air Bubbles, need to resample.

3. Return



- Return vials to the lab within 48 hours of collection time.
- Samples accepted during business hours Mon-Thurs (see physical address above) or before 3:30 pm on Friday.
- Samples can also be mailed to:
PO Box 1125 Burlington, VT 05402-1125.