

Nurse staffing is measured by nursing care hours per patient day (the number of nursing care hours relative to the patient workload). This measure was developed by the American Nurses Association for the National Database of Nursing Quality Indicators.

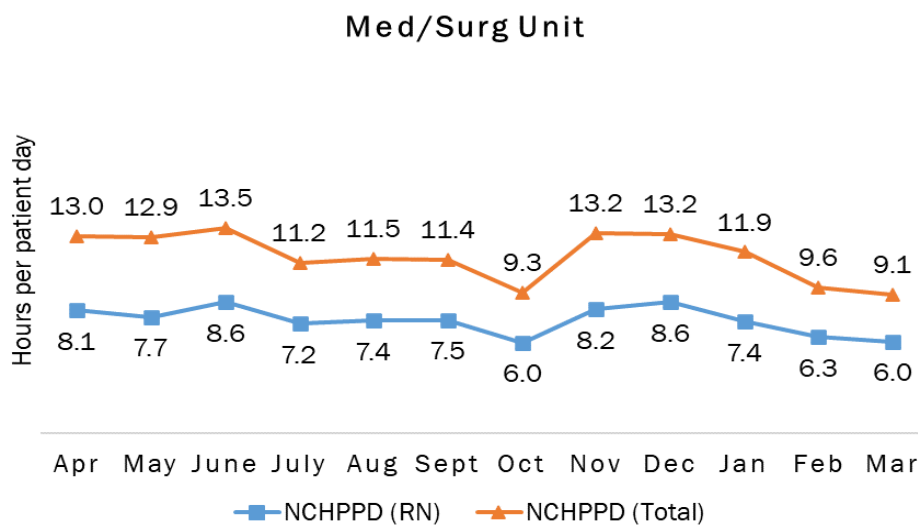
There is no national standard for optimal nurse staffing level. This is due to varying factors like intensity of patient's needs, the number of admissions, discharges and transfers during a shift, level of experience of nursing staff, layout of the unit and availability of resources (ancillary staff, technology etc.).

### Medical/Surgical Unit

The Medical/Surgical Unit has 25 licensed beds and cares for patients of all ages. Types of services provided in this setting include care of people with general medical and surgical problems, heart monitoring, end-of-life care, and rehabilitative care. Short-term care for people who cannot manage independently in their homes (Swing Bed Patients) is also provided.

### Nursing Care Hours per Patient Day (NCHPPD): April 2023 - March 2024

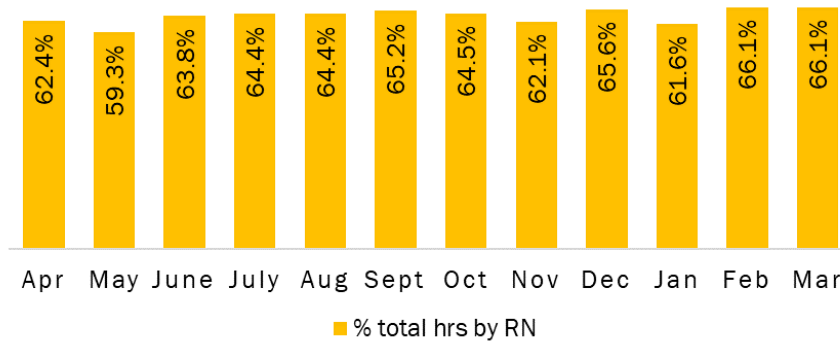
This graph shows the average number of direct nursing care hours provided per patient during a 24-hour period. Results are shown for care provided by registered nurses (RNs) and by all nursing staff (total) per month.



## Percent of Total Nursing Care Hours Provided by RNs: April 2023 – March 2024

This graph shows the percentage of total nursing hours provided by RNs each month. The yearly average for this period is 63.8%.

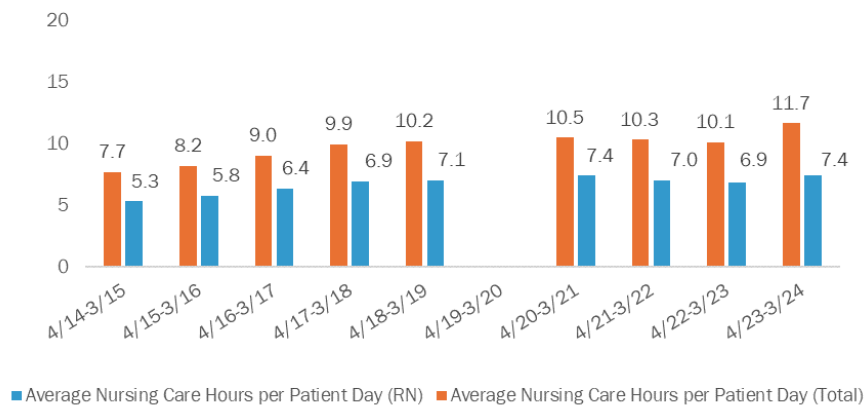
Med/Surg Unit



## Yearly Average of RN and Total Nursing Care Hours per Patient Day: 2014- 2024

The graph below shows trend over time on the average RN and total nursing care hours per patient days.

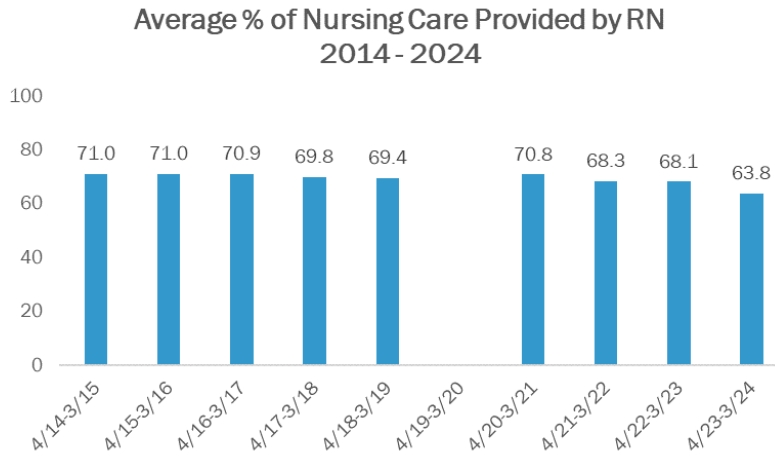
Med/Surg Unit 2014 - 2024



# 2024 Nurse Staffing Data

## Yearly Percent of Total Nursing Care Hours Provided by RNs: 2014 – 2024

The graph below shows the trend over time on the average percentage of nursing care that was provided by RN.



Nurse staffing is measured by nursing care hours per patient day (the number of nursing care hours relative to the patient workload). This measure was developed by the American Nurses Association for the National Database of Nursing Quality Indicators.

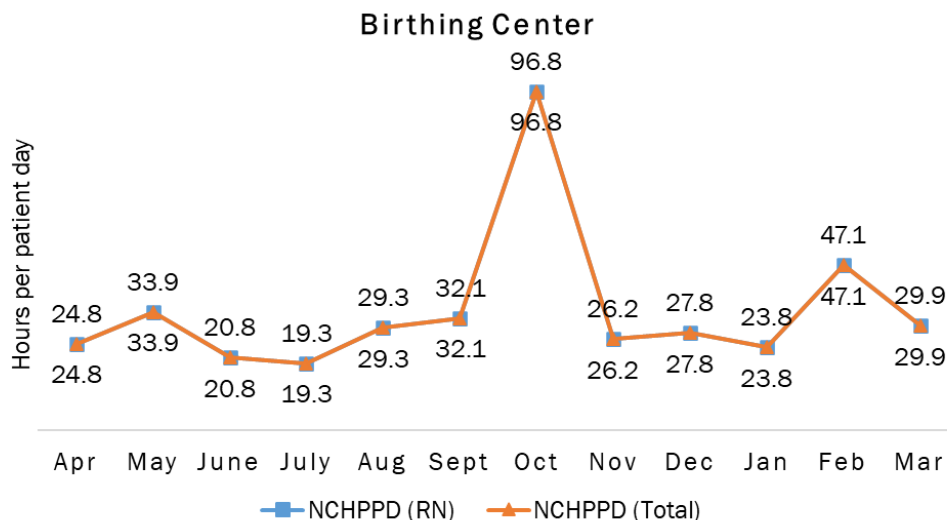
There is no national standard for optimal nurse staffing level. This is due to varying factors like intensity of patient's needs, the number of admissions, discharges and transfers during a shift, level of experience of nursing staff, layout of the unit and availability of resources (ancillary staff, technology etc.).

### Birthing Center Unit

The Birthing Center Unit has 4 licensed beds with the option of flexing to five beds when necessary. Types of care provided in this unit includes care to low and moderate risk women during the antepartum, intrapartum, and postpartum periods as well as caring for late preterm newborns.

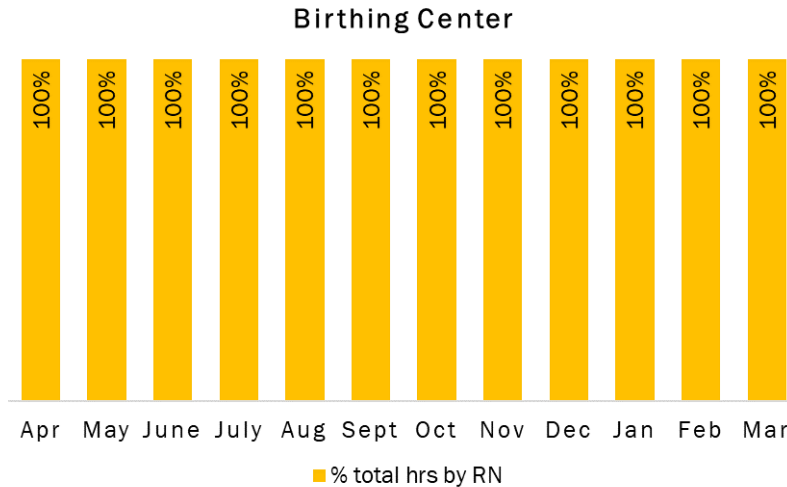
### Nursing Care Hours per Patient Day (NCHPPD): April 2023 - March 2024

This graph shows the average number of direct nursing care hours provided per patient during a 24-hour period. Results are shown for care provided by registered nurses (RNs) and by all nursing staff (total) per month.



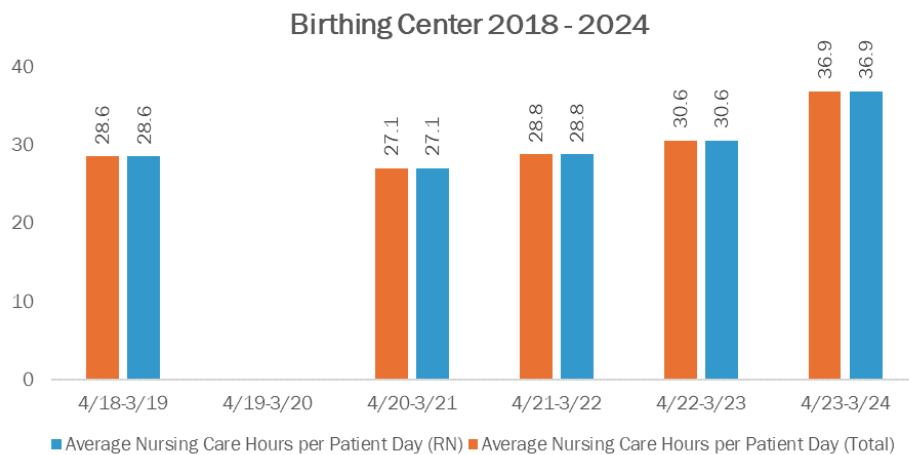
## Percent of Total Nursing Care Hours Provided by RNs: April 2023 – March 2024

This graph shows the percentage of total nursing hours provided by RNs each month. The yearly average for this period is 100%.



## Yearly Average of RN and Total Nursing Care Hours per Patient Day: 2018 - 2024

The graph below shows trend over time on the average RN and total nursing care hours per patient days.



# 2024 Nurse Staffing Data

## Yearly Percent of Total Nursing Care Hours Provided by RNs: 2018 – 2024

The graph below shows the trend over time on the average percentage of nursing care that was provided by RN.

