



2007 Emergency Department Hospital Utilization Report

Prepared by

Vermont Department of Health

Vermont Department of Banking, Insurance,
Securities and Health Care Administration



2007

Vermont Emergency Department Hospital Utilization Report

December 2009

**Department of Banking, Insurance, Securities
and Health Care Administration**

Department of Health

This report was produced in cooperation with the Department of Health, Division of Health Surveillance

Joan Mongeon, Public Health Analyst III
Peggy Brozicevic, Research and Statistics Chief

Under the direction of the Vermont Department of Banking, Insurance, Securities and Health Care Administration,
Division of Health Care Administration

Dian Kahn, Director of Analysis and Data Management
Lucas Herring, Health Policy Analyst

The Department of Health
Division of Health Surveillance
108 Cherry Street, PO Box 70
Burlington, Vermont 05402-0070
(802) 863-7300 or (800) 869-2871

The Division of Health Care Administration
89 Main Street, Drawer 20
Montpelier, Vermont 05620-3601
(802) 828-2900 or (800) 631-7788
www.bishca.state.vt.us

Acknowledgments

The production of this document would not be possible without the assistance of many individuals and the cooperation of the hospitals.

The Vermont Department of Banking, Insurance, Securities and Health Care Administration (BISHCA) thanks the Vermont Association of Hospitals and Health Systems - Network Services Organization (VAHHS-NSO) for providing assistance under a contract with the department and for working with the hospitals to ensure timely and accurate reporting of the data. BISHCA also thanks the participating hospitals for their efforts in submitting the data and responding to requests for clarification and corrections. In addition, BISHCA appreciates the sharing of data by the New Hampshire Department of Health and Human Services, the Massachusetts Division of Health Care Finance and Policy and the New York Department of Health. These organizations provide data about Vermont residents using New Hampshire, Massachusetts and New York hospitals.

Disclaimer

Hospital discharge data for use in this publication were supplied by the VAHHS-NSO reporting system, Vermont EXPLOR, under a contract with BISHCA. These data were supplied upon the authorization of the hospitals through agreements between VAHHS-NSO and each participating hospital.

After receipt of the data files from VAHHS-NSO, the data undergo additional editing and processing by the Vermont Department of Health (VDH), under an agreement with BISHCA, before inclusion in the Vermont Uniform Hospital Discharge Data Set. The Vermont Uniform Hospital Discharge Data Set is used to construct this Hospital Utilization Report and is the official state data file, available to the public. The Health Department does not assume responsibility for errors in the data due to coding or processing by hospitals, VAHHS-NSO Vermont Explor, or other data providers.

Hospital Data Files and Reports

Public use hospital discharge data files as well as this hospital utilization report and associated tables are available for download on the BISHCA website at: <http://www.bishca.state.vt.us/HcaDiv/hcdefault.htm> under “Data and Reports”. Information on requesting research hospital discharge data sets is also provided on this website. For any additional information concerning the data sets contact the Vermont Division of Health Care Administration at (802) 828-2900 or (800) 631-7788. To obtain a hard copy of this report contact the Vermont Department of Health at (802) 863-7300 or (800) 869-2871.

Table of Contents

User’s Guide to the Emergency Department Tables.....	6	Table E8b	34
Emergency Department Highlights.....	9	Clinical Classifications Software (CCS) High Level	
Table E1a	14	Diagnosis Groups by Vermont Hospitals, 2007	
Clinical Classifications Software (CCS) High Level		Table E9	36
Diagnosis Groups by Type of ED Visit, 2003-2007		Primary Payer by Vermont Hospitals, 2007	
Table E1b	16	Table E10	37
Clinical Classifications Software (CCS) High Level		Clinical Classifications Software (CCS) High Level	
Diagnosis Groups by Type of ED Visit, 2007		Diagnosis Groups by VT, NH, MA and NY Hospitals, 2007	
Table E2	17	Table E11	39
Clinical Classifications Software (CCS) High Level		Patient Origin Report, ED Visits by Hospital Service Area and	
and Leading Single-Level Diagnosis Groups by		Ziptown, 2007	
Type of ED Visit, 2007		Table E12	51
Table E3	20	Utilization by Hospital Service Area and Clinical Classification	
Vermont Hospitals by Type of ED Visit, 2007		Software (CCS) High Level Diagnosis Group, 2007	
Table E4	21	Figure E1	61
Clinical Classifications Software (CCS) High Level		Bar Chart: Percent of Visits by Admission Day of	
Diagnosis Groups by Age, 2007		Week and Type of ED Visit, 2007	
Table E5	25	Figure E2	62
Clinical Classifications Software (CCS) High Level		Bar Chart: Percent of Visits by Admission Day of	
Diagnosis Groups by Sex and Age, 2007		Week and Injury Versus Non-Injury Diagnosis, 2007	
Table E6	29	Figure E3	63
Clinical Classifications Software (CCS) High Level		Bar Chart: Percent of Visits by Admission Hour and	
Diagnosis Groups by Primary Payer, 2007		Type of ED Visit, 2007	
Table E7	31	Figure E4	64
Primary Payer by Age, 2007		Bar Chart: Percent of Visits by Admission Hour and	
Table E8a	32	Injury Versus Non-Injury Diagnosis, 2007	
Clinical Classifications Software (CCS) High Level			
Diagnosis Groups by Vermont Hospitals, 2007			

Appendices

Appendix E1: Definitions and Formulae 65

Appendix E2: 2007 Clinical Classifications Software (CCS)
High-Level and Single-Level Diagnosis
Categories 67

Appendix E3: Towns and Hospitals in Vermont
Hospital Service Areas 72

Appendix E4: Hospitals in this Report 77

User's Guide to the Emergency Department Tables

Emergency Department Data Collection in Vermont

Collection of Vermont (VT) hospital emergency department (ED) data began in January 2001, under the authority of the Department of Banking, Insurance, Securities and Health Care Administration (BISHCA). Like the inpatient and outpatient procedure files, the ED data are collected by the Vermont Association of Hospitals and Health Systems - Network Services Organization (VAHHS-NSO) and managed by the Vermont Department of Health (VDH).

To improve our understanding of utilization patterns in the health care system, ED data were selected as the next logical subset of outpatient data to be collected. ED usage is particularly of interest in a rural state that may have limited sites and hours available for provision of primary and urgent care in some areas. ED data also provide essential information for injury control studies since this is often the setting in which accidental and intentional injuries are evaluated and treated.

Definitions

Recent Changes in Definition of Emergency Department Data

In data years 2001 and 2002, ED data analyses included all records coded as emergency room visits by hospitals (patient type "E") as well as inpatient records (patient type "I") that were coded as having an ED admission source. These inpatient records that originated in the ED were included in the inpatient

Monographs as well as the ED tables.

Beginning with data year 2003, two changes were made to the way in which records were selected for inclusion in ED data analyses. ED data selection was expanded to include all patient type records which had an associated revenue code between 450-459 (Emergency Room). At the same time, the number of ED data records chosen for analysis was reduced since more than 12,000 patient type "E" records were found in 2003 to have no associated ER revenue charge. Many of these records turned out to be for clinics that were held after hours in hospital EDs.

Comparison to Previous Monographs

Because of the change in record selection rules described above, the ED tables presented in this report cannot meaningfully be compared to the tables published in the 2001 and 2002 Monographs.

Sources of Data

All fourteen of Vermont's civilian acute care hospitals participate in the ED reporting system. The Veterans Administration hospital in White River Junction does not participate in ED data collection. Collection procedures are the same as those for inpatient and outpatient data, with hospitals providing data to the VAHHS-NSO EXPLOR system, the source of the data that is finally provided to VDH, the data management designee of BISHCA.

Beginning with reporting year 2001, ED data for Vermont residents using New Hampshire (NH) hospitals have been received from the New Hampshire Department of Health and Human Services. Beginning with reporting year 2005, data for Vermont residents using Massachusetts (MA) hospitals have been received from the Massachusetts Division of Health Care Finance and Policy. In 2006 ED data for Vermont residents using New York (NY) hospitals have been received from the New York Health Department.

Clinical Classifications Software (CCS) Grouper

Clinical Classifications Software (CCS) is a tool that collapses principal diagnosis (over 12,000) and procedure (over 3,500) codes into meaningful categories. The single-level diagnosis CCS aggregates illnesses and conditions into more than 260 mutually exclusive categories. Similarly, the single-level procedure CCS aggregates procedures into 231 mutually exclusive categories, most representing single types of procedures. High-level CCS groups further collapse single-level CCS groups into broad categories based on body systems or condition. The CCS diagnosis grouper is used in the ED tables to categorize principal diagnosis. ED visits that do not have a principal diagnosis are excluded from this report.

CCS was developed at the Agency for Healthcare Research and Quality (AHRQ) and is available to the public at the website: <http://www.hcup-us.ahrq.gov/toolsoftware/ccs/ccs.jsp>

Hospital vs. Hospital Service Area Data

In the tables that follow, ED data are reported by hospital, and hospital service area. Beginning with 2006 data, Emergency department data from the neighboring states of New Hampshire, New York and Massachusetts, allow for the calculation of population based analysis by HSA. See page 7 for maps of Vermont towns and HSAs.

Emergency Department (ED) Reporting

ED visits are reported in several ways in the ED tables. Visits are presented in terms of Vermont or Vermont plus NH, MA and NY hospitals, admission or non-admission to the inpatient setting, and all visits versus visits by Vermont residents only.

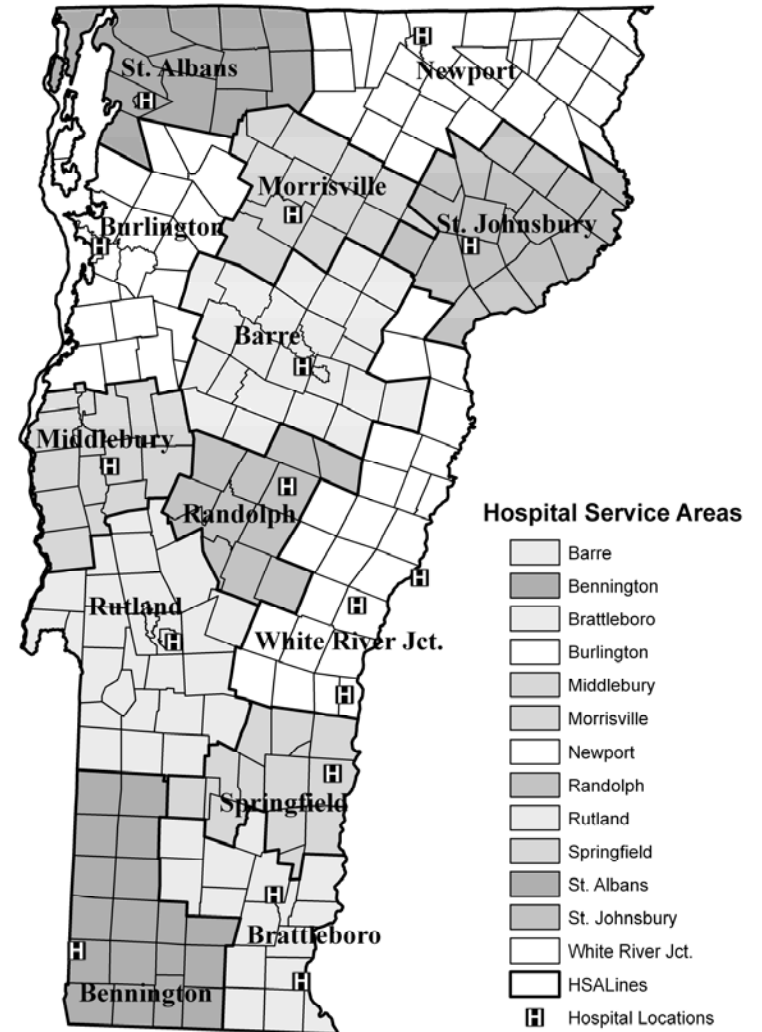
The following table presents an overview of the number of records and how ED visits were selected in each of the ED tables and figures.

		Tables E1–E9, Figures E1–E4	Tables E10	Tables E11-E12
	Total ED Visits	254,589	255,691	231,838
Hospitals	VT Hospitals	X	X	X
	NH Hospitals		X	X
	MA Hospitals		X	X
	NY Hospitals		X	X
Type of ED Visits	Not Admitted	X	X	X
	Inpatient Admission	X	X	
Type of Residents	VT Residents	X	X	X
	Non-Residents	X		

Vermont Towns



Vermont Hospital Service Areas and Hospitals



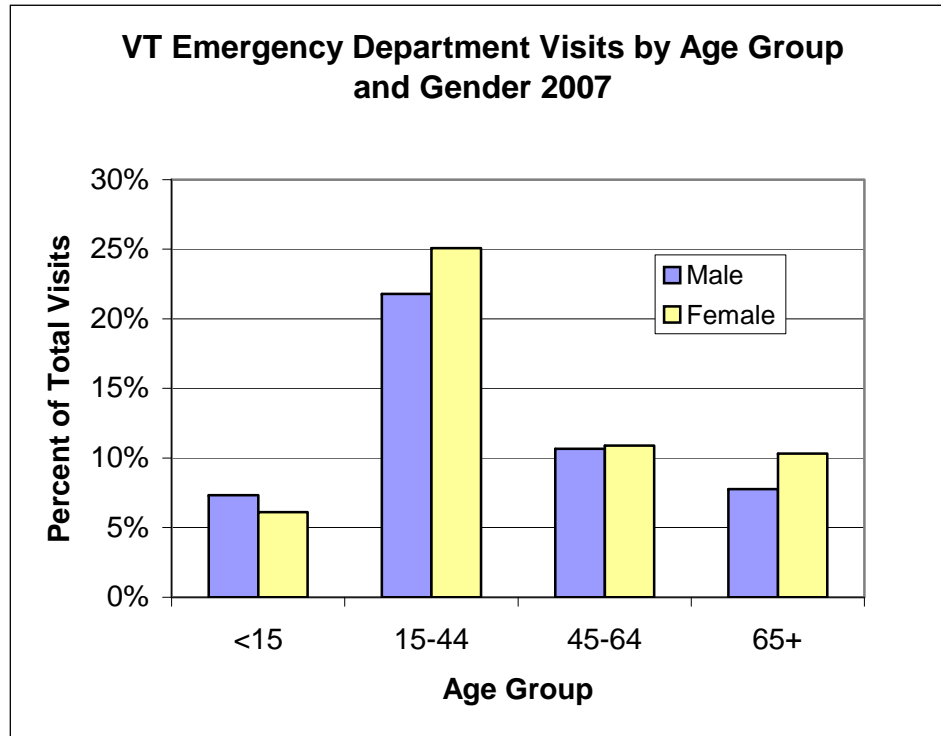
Emergency Department Highlights

- **In 2007 there were a total of 254,589 Emergency Department visits to Vermont hospitals**, not including the VA hospital, encompassing both Vermont residents and non-residents. 90.6% or 230,764 of these Emergency Department visits were not admitted while the remaining 9.4% or 23,825 of Emergency Department visits were admitted and categorized as inpatient discharges. (Table E1)
- **New Hampshire reported 23,594 Vermont resident Emergency Department visits in New Hampshire hospitals** while Massachusetts reported 2,352 and New York reported 1,306 in 2007. New Hampshire and New York saw a decrease in Vermont resident Emergency room visits from those in 2006 -- 23,937 and 1,330 visits respectively -- while Massachusetts saw an increase from 2,285. (Table E10)
- **The age-adjusted visits per 1000 population ranges from 261.6 in the Burlington Hospital Service Area to 524.4 in the St. Albans Hospital Service Area.** A map of Hospital Service Areas can be found on page 7. (Table E12)
- **The weekend (Saturday and Sunday) continues to have the highest percent of total Emergency Department visits** and a lower rate of admissions to inpatient than weekdays. Availability of primary physicians may be a cause of the decreased emergency room visits on weekdays compared to weekends. Monday continues to have the highest percent of Emergency Department visits that resulted in inpatient admissions. (Figure E2)
- **Although the rate of Emergency Department visits not admitted as inpatient is below a 7% share between 10 p.m. and 8 a.m., the proportion of those admitted as inpatient exceeds the proportion not admitted to the hospital between 8 p.m. and 6 a.m.** This may be indicative of relatively higher acuity or other factors making it difficult to release patients during this overnight time period. The highest overall percentage of Emergency Department visits not resulting in hospital admissions occurs between 4 p.m. and 8 p.m. The highest overall percentage of Emergency Department visits resulting in hospital admissions occurs between 2 p.m. and 6 p.m. These figures are similar to finding in 2006. (Figure E3)

For information on utilization of inpatient and outpatient hospital services, see the “**Vermont Hospital Utilization Reports**” at: <http://www.bishca.state.vt.us/HcaDiv/hcdefault.htm> under “**Data and Reports**”.

Emergency Department Highlights

Patient Characteristics: Variations by Age and Sex



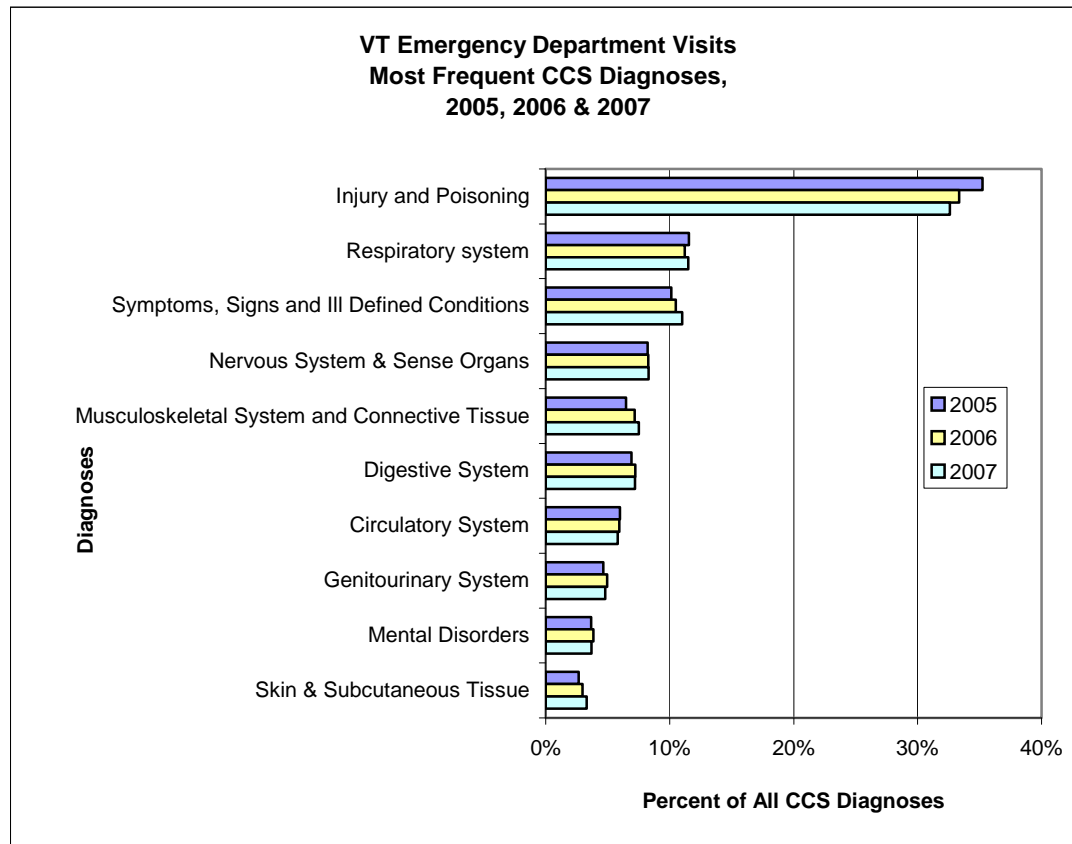
- Females comprised 52.4% or 133,442 of all Emergency Department visits in 2007.
- The 15-44 age group had the greatest share of male (45.8%) and female (47.8%) Emergency Department visits in 2007 (46.9% of the total Emergency Department visits).
- Females had a higher number of Emergency Department visits than males in all age groups except for the < 15 age group, which has been the trend for several years.

Figure 1

Data Source: 2007 VT Uniform Hospital Discharge Data Set, Table E5

Emergency Department Highlights

Emergency Department Visits in Vermont Hospitals: Top 10 CCS Diagnosis Groups by Type of ED Visit.



- **Injury and Poisoning** accounted for the most Emergency Department visits in 2007 at about 30.9%, but has continually declined from the 36.5% share in 2004.
- The percentage increased for the Top 10 CCS group diagnoses except **Injury and Poisoning, Circulatory System, Genitourinary System & Mental Disorders** from 2006 to 2007. The number of visits has decreased for these Top 10 CCS groups as well.
- **The only change of rank in the Top 10 CCS groups** was Musculoskeletal System and Connective Tissue passing Digestive Systems in Emergency Department visits between 2006 and 2007.

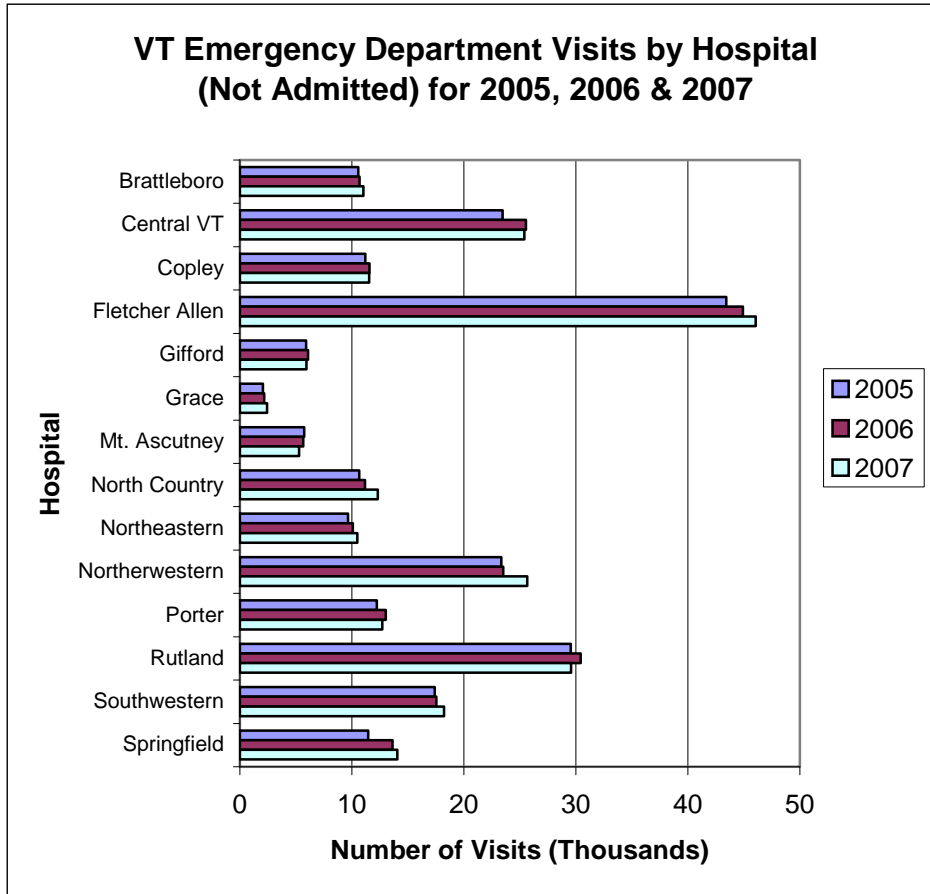
Figure 2

Data Source: 2005, 2006 & 2007 VT Uniform Hospital Discharge Data Sets, Table E1b

CCS (Clinical Classification Software) collapses principal diagnosis (over 12,000) and procedure codes (over 3,500) into meaningful and mutually exclusive categories (260).

Emergency Department Highlights

Hospital Trends: Emergency Department Visits by Hospital



- **Fletcher Allen** continues to have the most visits to the Emergency Department without admission at 46,055 visits in 2007.
- **Hospitals range from Southwestern Vermont Medical Center at 84.1% to Grace Cottage at 100.0%** of Emergency Department visits not resulting in an inpatient admission (Grace Cottage did have one visit that resulted in an inpatient admission).
- **Six Vermont Hospitals saw a decrease in Emergency Department visits between 2006 and 2007.** Mt. Ascutney saw the largest decrease, 6.5%, in Emergency Department visits.
- **Grace Cottage** saw the largest increase in Emergency Department visits at 13.0%, up from 2,165 in 2006 to 2,431 in 2007. **Northwestern Hospital** was the next highest at 9.2%, up from 23,513 in 2006 to 25,664 in 2007.

Figure 3

Data Source: 2005, 2006 and 2007 VT Uniform Hospital Discharge Data Sets, Table E3

Emergency Department Highlights

VT Emergency Department Visits Top 3 CCS Diagnosis Groups by Age, 2007

CCS Diagnosis Group	Number	Col%	CCS Diagnosis Group	Number	Col%	CCS Diagnosis Group	Number	Col%
Age < 5			Age 5-14			Age 15-24		
Injury and Poisoning	4,229	29.0	Injury and Poisoning	10,243	52.1	Injury and Poisoning	18,136	37.3
Respiratory System	3,321	22.8	Respiratory System	2,329	11.8	Symptoms, Signs and Ill Defined Conditions	5,313	10.9
Symptoms, Signs and Ill Defined Conditions	2,419	16.6	Symptoms, Signs and Ill Defined Conditions	2,095	10.6	Respiratory System	5,256	10.8
Other	4,624	31.6	Other	5,012	25.5	Other	19,928	41.0
All Cases	14,593	100.0	All Cases	19,679	100.0	All Cases	48,633	100.0
CCS Diagnosis Group	Number	Col%	CCS Diagnosis Group	Number	Col%	CCS Diagnosis Group	Number	Col%
Age 25-44			Age 45-64			Age 65-74		
Injury and Poisoning	21,636	30.6	Injury and Poisoning	15,055	27.4	Injury and Poisoning	3,616	20.8
Symptoms, Signs and Ill Defined Conditions	6,999	9.9	Circulatory System	6,143	11.2	Circulatory System	2,964	17.1
Respiratory Systems	6,808	9.6	Respiratory System	5,817	10.6	Respiratory System	2,532	14.6
Other	34,730	49.9	Other	27,861	50.8	Other	8,261	47.5
All Cases	70,173	100.0	All Cases	54,876	100.0	All Cases	17,373	100.0
CCS Diagnosis Group	Number	Col%	CCS Diagnosis Group		Number	Col%		
Age 75+			All Ages					
Injury and Poisoning	5,704	19.9	Injury and Poisoning		78,619	30.9		
Circulatory System	5,373	18.7	Respiratory System		30,336	11.9		
Respiratory System	4,273	14.9	Symptoms, Signs and Ill Defined Conditions		25,994	10.2		
Other	13,372	46.5	Other		119,640	47.0		
All Cases	28,722	100.0	All Cases		254,589	100.0		

Figure 4

Data Source: 2007 VT Uniform Hospital Discharge Data Set, Table E4

Table E1a
Clinical Classification Software (CCS) High Level Diagnosis Groups by Type of ED Visit and Data Year
2003-2007 VT Hospital Data, Includes VT Residents and Non-Residents
Number of Visits

Inpatient Discharges Originating in ED

CCS_GROUP	2003	2004	2005	2006	2007
Infectious & parasitic diseases	475	516	541	507	530
Neoplasms	628	607	565	586	606
Endocrine, nutritional, metabolic & immunity disorders	974	913	883	855	963
Diseases of the blood & blood-forming organs	224	215	233	225	230
Mental disorders	1,511	1,673	1,457	1,386	1,543
Diseases of the nervous system & sense organs	648	628	572	596	671
Diseases of the circulatory system	6,152	5,570	5,251	5,110	5,140
Diseases of the respiratory system	3,986	3,795	3,881	3,488	3,764
Diseases of the digestive system	3,796	3,827	3,569	3,571	3,827
Diseases of the genitourinary system	929	1,022	978	1,018	1,130
Contraception & complications of pregnancy & childbirth	131	138	141	123	112
Diseases of the skin & subcutaneous tissue	421	458	505	526	566
Musculoskeletal system & connective tissue	529	528	523	518	555
Congenital anomalies	32	40	39	23	33
Conditions originating in the perinatal period	0	1	0	0	0
Injury & poisoning	3,674	3,488	3,485	3,382	3,389
Symptoms, signs & ill-defined conditions	713	696	617	638	682
Residual codes, unclassified, all Ecodes	42	42	48	39	84
Total	24,865	24,157	23,288	22,591	23,825

Emergency Dept. (ED) Visits, Not Admitted

CCS_GROUP	2003	2004	2005	2006	2007
Infectious & parasitic diseases	3,326	2,890	3,379	3,539	3,209
Neoplasms	337	430	327	411	336
Endocrine, nutritional, metabolic & immunity disorders	2,240	2,232	2,402	2,478	2,481
Diseases of the blood & blood-forming organs	226	263	262	329	326
Mental disorders	6,834	7,148	7,953	8,702	8,546
Diseases of the nervous system & sense organs	16,464	16,269	17,837	18,692	19,176
Diseases of the circulatory system	10,957	11,746	12,970	13,414	13,344
Diseases of the respiratory system	23,536	21,352	25,038	25,380	26,572
Diseases of the digestive system	12,442	13,380	14,948	16,334	16,537
Diseases of the genitourinary system	8,742	9,357	10,079	11,166	11,093
Contraception & complications of pregnancy & childbirth	1,668	1,754	1,739	1,828	1,749
Diseases of the skin & subcutaneous tissue	4,537	5,006	5,773	6,711	7,525
Musculoskeletal system & connective tissue	13,043	12,451	14,008	16,196	17,360
Congenital anomalies	46	59	63	40	57
Conditions originating in the perinatal period	154	173	173	164	221
Injury & poisoning	71,099	72,602	76,297	75,390	75,230
Symptoms, signs & ill-defined conditions	20,257	20,664	21,959	23,712	25,312
Residual codes, unclassified, all Ecodes	1,119	1,259	1,422	1,518	1,690
Total	197,027	199,035	216,629	226,004	230,764

Table E1a
Clinical Classification Software (CCS) High Level Diagnosis Groups by Type of ED Visit and Data Year
2003-2007 VT Hospital Data, Includes VT Residents and Non-Residents
Number of Visits

All ED Visits, Including Those Admitted

CCS_GROUP	2003	2004	2005	2006	2007
Infectious & parasitic diseases	3,801	3,406	3,920	4,046	3,739
Neoplasms	965	1,037	892	997	942
Endocrine, nutritional, metabolic & immunity disorders	3,214	3,145	3,285	3,333	3,444
Diseases of the blood & blood-forming organs	450	478	495	554	556
Mental disorders	8,345	8,821	9,410	10,088	10,089
Diseases of the nervous system & sense organs	17,112	16,897	18,409	19,288	19,847
Diseases of the circulatory system	17,109	17,316	18,221	18,524	18,484
Diseases of the respiratory system	27,522	25,147	28,919	28,868	30,336
Diseases of the digestive system	16,238	17,207	18,517	19,905	20,364
Diseases of the genitourinary system	9,671	10,379	11,057	12,184	12,223
Contraception & complications of pregnancy & childbirth	1,799	1,892	1,880	1,951	1,861
Diseases of the skin & subcutaneous tissue	4,958	5,464	6,278	7,237	8,091
Musculoskeletal system & connective tissue	13,572	12,979	14,531	16,714	17,915
Congenital anomalies	78	99	102	63	90
Conditions originating in the perinatal period	154	174	173	164	221
Injury & poisoning	74,773	76,090	79,782	78,772	78,619
Symptoms, signs & ill-defined conditions	20,970	21,360	22,576	24,350	25,994
Residual codes, unclassified, all Ecodes	1,161	1,301	1,470	1,557	1,774
Total	221,892	223,192	239,917	248,595	254,589

Emergency department visits include all hospital records (outpatient and inpatient) which originated in the ED.

Inpatient discharges originating in the Emergency Department are reported here as well as in the hospital inpatient utilization report.

Inpatient discharges exclude newborns (MDC 15). ED records with missing or invalid diagnosis codes are excluded from this analysis.

Table E1b
Clinical Classifications Software (CCS) High Level Diagnosis Groups by Type of ED Visit
2007 VT Hospital Data, Includes VT Residents and Non-Residents
Number of Visits and Row Percents

Diagnosis Group	Emergency Dept. (ED) Visits, Not Admitted		Inpatient Discharges Originating in ED		All ED Visits, Including Those Admitted	
	Number	Row %	Number	Row %	Number	Row %
Injury & poisoning	75,230	95.7	3,389	4.3	78,619	100.0
Diseases of the respiratory system	26,572	87.6	3,764	12.4	30,336	100.0
Symptoms, signs & ill-defined conditions	25,312	97.4	682	2.6	25,994	100.0
Diseases of the digestive system	16,537	81.2	3,827	18.8	20,364	100.0
Diseases of the nervous system & sense organs	19,176	96.6	671	3.4	19,847	100.0
Diseases of the circulatory system	13,344	72.2	5,140	27.8	18,484	100.0
Musculoskeletal system & connective tissue	17,360	96.9	555	3.1	17,915	100.0
Diseases of the genitourinary system	11,093	90.8	1,130	9.2	12,223	100.0
Mental disorders	8,546	84.7	1,543	15.3	10,089	100.0
Diseases of the skin & subcutaneous tissue	7,525	93.0	566	7.0	8,091	100.0
Infectious & parasitic diseases	3,209	85.8	530	14.2	3,739	100.0
Endocrine, nutritional, metabolic & immunity disorders	2,481	72.0	963	28.0	3,444	100.0
Contraception & complications of pregnancy & childbirth	1,749	94.0	112	6.0	1,861	100.0
Residual codes, unclassified, all Ecodes	1,690	95.3	84	4.7	1,774	100.0
Neoplasms	336	35.7	606	64.3	942	100.0
Diseases of the blood & blood-forming organs	326	58.6	230	41.4	556	100.0
Conditions originating in the perinatal period	221	100.0	0	0.0	221	100.0
Congenital anomalies	57	63.3	33	36.7	90	100.0
Total	230,764	90.6	23,825	9.4	254,589	100.0

Emergency department visits include all hospital records (outpatient and inpatient) which originated in the ED.

Inpatient discharges originating in the Emergency Department (23,825 for 2007) are reported here as well as in the hospital inpatient utilization report.

Inpatient discharges exclude newborns (MDC 15). 43 ED records with missing or invalid diagnosis codes are excluded from this analysis.

Table E2
Clinical Classifications Software (CCS) High Level and Leading Single-Level Diagnosis Groups by Type of ED Visit
2007 VT Hospital Data, Includes VT Residents and Non-Residents
Number of Visits and Row Percents

Diagnosis Group	Emergency Dept. (ED) Visits, Not Admitted		Inpatient Discharges Originating in ED		All ED Visits, Including Those Admitted	
	Number	Row %	Number	Row %	Number	Row %
Injury and poisoning	75,230	95.7	3,389	4.3	78,619	100.0
232 Sprains and strains	16,458	99.8	35	0.2	16,493	100.0
239 Superficial injury, contusion	15,684	99.6	63	0.4	15,747	100.0
236 Open wounds of extremities	10,130	99.5	51	0.5	10,181	100.0
244 Other injuries and conditions due to external causes	9,194	99.1	84	0.9	9,278	100.0
All other subgroups within this CCS category	23,764	88.3	3,156	11.7	26,920	100.0
Diseases of the respiratory system	26,572	87.6	3,764	12.4	30,336	100.0
126 Other upper respiratory infections	8,695	99.3	57	0.7	8,752	100.0
133 Other lower respiratory disease	5,262	97.4	139	2.6	5,401	100.0
122 Pneumonia (except TB or STD related)	2,422	58.5	1,718	41.5	4,140	100.0
127 Chronic obstructive pulmonary disease and bronchiectasis	2,705	78.8	726	21.2	3,431	100.0
All other subgroups within this CCS category	7,488	86.9	1,124	13.1	8,612	100.0
Symptoms, signs and ill-defined conditions	25,312	97.4	682	2.6	25,994	100.0
251 Abdominal pain	10,763	98.3	185	1.7	10,948	100.0
250 Nausea and vomiting	3,438	98.4	56	1.6	3,494	100.0
253 Allergic reactions	2,762	99.3	20	0.7	2,782	100.0
All other subgroups within this CCS category	8,349	95.2	421	4.8	8,770	100.0
Diseases of the digestive system	16,537	81.2	3,827	18.8	20,364	100.0
136 Disorders of teeth and jaw	6,404	99.8	11	0.2	6,415	100.0
155 Other gastrointestinal disorders	2,378	93.6	162	6.4	2,540	100.0
154 Noninfectious gastroenteritis	2,000	93.1	149	6.9	2,149	100.0
All other subgroups within this CCS category	5,755	62.1	3,505	37.9	9,260	100.0
Diseases of the nervous system and sense organs	19,176	96.6	671	3.4	19,847	100.0
84 Headache, including migraine	5,735	98.9	61	1.1	5,796	100.0
92 Otitis media and related conditions	3,002	99.9	3	0.1	3,005	100.0
93 Conditions associated with dizziness or vertigo	2,306	98.1	45	1.9	2,351	100.0
95 Other nervous system disorders	1,890	92.3	158	7.7	2,048	100.0
All other subgroups within this CCS category	6,243	93.9	404	6.1	6,647	100.0
Diseases of the circulatory system	13,344	72.2	5,140	27.8	18,484	100.0
102 Nonspecific chest pain	7,015	92.9	539	7.1	7,554	100.0
106 Cardiac dysrhythmias	2,077	72.2	800	27.8	2,877	100.0
All other subgroups within this CCS category	4,252	52.8	3,801	47.2	8,053	100.0

Table E2
Clinical Classifications Software (CCS) High Level and Leading Single-Level Diagnosis Groups by Type of ED Visit
2007 VT Hospital Data, Includes VT Residents and Non-Residents
Number of Visits and Row Percents

Diagnosis Group	Emergency Dept. (ED) Visits, Not Admitted		Inpatient Discharges Originating in ED		All ED Visits, Including Those Admitted	
	Number	Row %	Number	Row %	Number	Row %
Musculoskeletal system and connective tissue	17,360	96.9	555	3.1	17,915	100.0
205 Spondylosis, intervertebral disc disorders, other back problems	7,461	97.4	198	2.6	7,659	100.0
211 Other connective tissue disease	4,655	97.2	132	2.8	4,787	100.0
204 Other non-traumatic joint disorders	4,562	99.6	20	0.4	4,582	100.0
All other subgroups within this CCS category	682	76.9	205	23.1	887	100.0
Diseases of the genitourinary system	11,093	90.8	1,130	9.2	12,223	100.0
159 Urinary tract infections	4,135	88.4	544	11.6	4,679	100.0
160 Calculus of urinary tract	2,127	93.5	147	6.5	2,274	100.0
163 Genitourinary symptoms and ill-defined conditions	1,525	98.8	19	1.2	1,544	100.0
All other subgroups within this CCS category	3,306	88.7	420	11.3	3,726	100.0
Mental disorders	8,546	84.7	1,543	15.3	10,089	100.0
657 MHSA: Mood disorders	1,943	75.2	641	24.8	2,584	100.0
660 MHSA: Alcohol related disorders	1,919	89.5	225	10.5	2,144	100.0
651 MHSA: Anxiety disorders	1,917	95.6	89	4.4	2,006	100.0
All other subgroups within this CCS category	2,767	82.5	588	17.5	3,355	100.0
Diseases of the skin and subcutaneous tissue	7,525	93.0	566	7.0	8,091	100.0
197 Skin and subcutaneous tissue infections	5,405	91.1	530	8.9	5,935	100.0
200 Other skin disorders	1,714	99.9	1	0.1	1,715	100.0
All other subgroups within this CCS category	406	92.1	35	7.9	441	100.0
Infectious and parasitic diseases	3,209	85.8	530	14.2	3,739	100.0
7 Viral infection	2,180	97.2	63	2.8	2,243	100.0
2 Septicemia (except in labor)	51	11.4	396	88.6	447	100.0
All other subgroups within this CCS category	978	93.2	71	6.8	1,049	100.0
Endocrine, nutritional, metabolic and immunity disorders	2,481	72.0	963	28.0	3,444	100.0
55 Fluid and electrolyte disorders	1,087	72.3	416	27.7	1,503	100.0
50 Diabetes mellitus with complications	615	61.8	380	38.2	995	100.0
All other subgroups within this CCS category	779	82.3	167	17.7	946	100.0

Table E2
Clinical Classifications Software (CCS) High Level and Leading Single-Level Diagnosis Groups by Type of ED Visit
2007 VT Hospital Data, Includes VT Residents and Non-Residents
Number of Visits and Row Percents

Diagnosis Group	Emergency Dept. (ED) Visits, Not Admitted		Inpatient Discharges Originating in ED		All ED Visits, Including Those Admitted	
	Number	Row %	Number	Row %	Number	Row %
Contraception and complications of pregnancy and childbirth	1,749	94.0	112	6.0	1,861	100.0
181 Other complications of pregnancy	947	95.6	44	4.4	991	100.0
182 Hemorrhage during pregnancy, abruptio placenta, placenta previa	384	100.0	0	0.0	384	100.0
All other subgroups within this CCS category	418	86.0	68	14.0	486	100.0
Residual codes, unclassified, all Ecodes	1,690	95.3	84	4.7	1,774	100.0
259 Residual codes, unclassified	1,687	95.3	84	4.7	1,771	100.0
All other subgroups within this CCS category	3	100.0	0	0.0	3	100.0
Neoplasms	336	35.7	606	64.3	942	100.0
42 Secondary malignancies	39	16.3	200	83.7	239	100.0
19 Cancer of bronchus, lung	46	30.5	105	69.5	151	100.0
All other subgroups within this CCS category	251	45.5	301	54.5	552	100.0
Diseases of the blood and blood-forming organs	326	58.6	230	41.4	556	100.0
59 Deficiency and other anemia	174	62.1	106	37.9	280	100.0
62 Coagulation and hemorrhagic disorders	93	74.4	32	25.6	125	100.0
63 Diseases of white blood cells	43	37.4	72	62.6	115	100.0
All other subgroups within this CCS category	16	44.4	20	55.6	36	100.0
Conditions originating in the perinatal period	221	100.0	--	--	221	100.0
224 Other perinatal conditions	208	100.0	--	--	208	100.0
All other subgroups within this CCS category	13	100.0	--	--	13	100.0
Congenital anomalies	57	63.3	33	36.7	90	100.0
Total	230,764	90.6	23,825	9.4	254,589	100.0

Emergency department visits include all hospital records (outpatient and inpatient) which originated in the ED.

Inpatient discharges originating in the Emergency Department (23,825 for 2007) are reported here as well as in the hospital inpatient utilization report.

Inpatient discharges exclude newborns (MDC 15). 43 ED records with missing or invalid diagnosis codes are excluded from this analysis.

Table E3
Vermont Hospitals by Type of ED Visit
2007 VT Hospital Data, Includes VT Residents and Non-Residents
Number of Visits and Row Percents

Vermont Hospital	Emergency Dept. (ED) Visits, Not Admitted		Inpatient Discharges Originating in ED		All ED Visits, Including Those Admitted	
	Number	Row %	Number	Row %	Number	Row %
Brattleboro Memorial Hospital	11,015	90.2	1,190	9.8	12,205	100.0
Central Vermont Medical Center	25,414	91.7	2,290	8.3	27,704	100.0
Copley Hospital	11,557	98.3	196	1.7	11,753	100.0
Fletcher Allen Health Care	46,055	84.9	8,219	15.1	54,274	100.0
Gifford Medical Center	5,948	90.4	629	9.6	6,577	100.0
Grace Cottage Hospital	2,431	100.0	1	0.0	2,432	100.0
Mt. Ascutney Hospital and Health Center	5,273	98.9	61	1.1	5,334	100.0
North Country Hospital	12,307	97.6	297	2.4	12,604	100.0
Northeastern Vermont Regional Hospital	10,498	97.1	318	2.9	10,816	100.0
Northwestern Medical Center	25,664	95.0	1,339	5.0	27,003	100.0
Porter Medical Center	12,719	98.2	239	1.8	12,958	100.0
Rutland Regional Medical Center	29,585	87.7	4,134	12.3	33,719	100.0
Southwestern Vermont Medical Center	18,238	84.1	3,451	15.9	21,689	100.0
Springfield Hospital	14,060	90.6	1,461	9.4	15,521	100.0
Total	230,764	90.6	23,825	9.4	254,589	100.0

Emergency department visits include all hospital records (outpatient and inpatient) which originated in the ED.

Inpatient discharges originating in the Emergency Department (23,825 in 2007) are reported here as well as in the hospital inpatient utilization report.

Inpatient discharges exclude newborns (MDC 15). 43 ED records with missing or invalid diagnosis codes are excluded from this analysis.

Table E4
Clinical Classifications Software (CCS) High Level Diagnosis Groups by Age
2007 VT Hospital ED Visits, Includes VT Residents and Non-Residents
Number of Visits, Row and Column Percents

Diagnosis Group	Age Group							Total
	Under 5	5-14	15-24	25-44	45-64	65-74	75+	
Injury and poisoning								
Visits	4,229	10,243	18,136	21,636	15,055	3,616	5,704	78,619
Row %	5.4	13.0	23.1	27.5	19.1	4.6	7.3	100.0
Diseases of the respiratory system								
Visits	3,321	2,329	5,256	6,808	5,817	2,532	4,273	30,336
Row %	10.9	7.7	17.3	22.4	19.2	8.3	14.1	100.0
Symptoms, signs and ill-defined conditions								
Visits	2,419	2,095	5,313	6,999	5,098	1,462	2,608	25,994
Row %	9.3	8.1	20.4	26.9	19.6	5.6	10.0	100.0
Diseases of the digestive system								
Visits	804	731	3,944	6,782	4,306	1,341	2,456	20,364
Row %	3.9	3.6	19.4	33.3	21.1	6.6	12.1	100.0
Diseases of the nervous system and sense organs								
Visits	1,983	1,623	3,238	6,288	4,242	1,049	1,424	19,847
Row %	10.0	8.2	16.3	31.7	21.4	5.3	7.2	100.0
Diseases of the circulatory system								
Visits	29	126	841	3,008	6,143	2,964	5,373	18,484
Row %	0.2	0.7	4.5	16.3	33.2	16.0	29.1	100.0
Musculoskeletal system and connective tissue								
Visits	152	724	2,649	6,582	4,708	1,299	1,801	17,915
Row %	0.8	4.0	14.8	36.7	26.3	7.3	10.1	100.0
Diseases of the genitourinary system								
Visits	209	364	2,926	3,508	2,449	997	1,770	12,223
Row %	1.7	3.0	23.9	28.7	20.0	8.2	14.5	100.0
Mental disorders								
Visits	12	411	2,431	3,793	2,615	359	468	10,089
Row %	0.1	4.1	24.1	37.6	25.9	3.6	4.6	100.0
Diseases of the skin and subcutaneous tissue								
Visits	364	458	1,495	2,579	1,968	553	674	8,091
Row %	4.5	5.7	18.5	31.9	24.3	6.8	8.3	100.0
Infectious and parasitic diseases								
Visits	564	394	819	769	628	237	328	3,739
Row %	15.1	10.5	21.9	20.6	16.8	6.3	8.8	100.0

Table E4
Clinical Classifications Software (CCS) High Level Diagnosis Groups by Age
2007 VT Hospital ED Visits, Includes VT Residents and Non-Residents
Number of Visits, Row and Column Percents

Diagnosis Group	Age Group							Total
	Under 5	5-14	15-24	25-44	45-64	65-74	75+	
Endocrine, nutritional, metabolic and immunity disorders								
Visits	161	103	321	561	899	473	926	3,444
Row %	4.7	3.0	9.3	16.3	26.1	13.7	26.9	100.0
Contraception and complications of pregnancy and childbirth								
Visits	1	1	1,003	850	6	0	0	1,861
Row %	0.1	0.1	53.9	45.7	0.3	0.0	0.0	100.0
Residual codes, unclassified, all Ecodes								
Visits	75	47	198	394	444	178	438	1,774
Row %	4.2	2.6	11.2	22.2	25.0	10.0	24.7	100.0
Neoplasms								
Visits	6	8	20	85	338	206	279	942
Row %	0.6	0.8	2.1	9.0	35.9	21.9	29.6	100.0
Diseases of the blood and blood-forming organs								
Visits	17	17	31	51	143	102	195	556
Row %	3.1	3.1	5.6	9.2	25.7	18.3	35.1	100.0
Conditions originating in the perinatal period								
Visits	216	0	4	1	0	0	0	221
Row %	97.7	0.0	1.8	0.5	0.0	0.0	0.0	100.0
Congenital anomalies								
Visits	31	5	8	19	17	5	5	90
Row %	34.4	5.6	8.9	21.1	18.9	5.6	5.6	100.0
Total								
Visits	14,593	19,679	48,633	70,713	54,876	17,373	28,722	254,589
Row %	5.7	7.7	19.1	27.8	21.6	6.8	11.3	100.0

Emergency department visits include all hospital records (outpatient and inpatient) which originated in the ED.

Inpatient discharges originating in the Emergency Department (23,825 for 2007) are reported here as well as in the hospital inpatient utilization report.

Inpatient discharges exclude newborns (MDC 15). 43 ED records with missing or invalid diagnosis codes are excluded from this analysis.

Table E4
Clinical Classifications Software (CCS) High Level Diagnosis Groups by Age
2007 VT Hospital ED Visits, Includes VT Residents and Non-Residents
Number of Visits, Row and Column Percents

Diagnosis Group	Age Group							Total
	Under 5	5-14	15-24	25-44	45-64	65-74	75+	
Injury and poisoning								
Visits	4,229	10,243	18,136	21,636	15,055	3,616	5,704	78,619
Col %	29.0	52.1	37.3	30.6	27.4	20.8	19.9	30.9
Diseases of the respiratory system								
Visits	3,321	2,329	5,256	6,808	5,817	2,532	4,273	30,336
Col %	22.8	11.8	10.8	9.6	10.6	14.6	14.9	11.9
Symptoms, signs and ill-defined conditions								
Visits	2,419	2,095	5,313	6,999	5,098	1,462	2,608	25,994
Col %	16.6	10.6	10.9	9.9	9.3	8.4	9.1	10.2
Diseases of the digestive system								
Visits	804	731	3,944	6,782	4,306	1,341	2,456	20,364
Col %	5.5	3.7	8.1	9.6	7.8	7.7	8.6	8.0
Diseases of the nervous system and sense organs								
Visits	1,983	1,623	3,238	6,288	4,242	1,049	1,424	19,847
Col %	13.6	8.2	6.7	8.9	7.7	6.0	5.0	7.8
Diseases of the circulatory system								
Visits	29	126	841	3,008	6,143	2,964	5,373	18,484
Col %	0.2	0.6	1.7	4.3	11.2	17.1	18.7	7.3
Musculoskeletal system and connective tissue								
Visits	152	724	2,649	6,582	4,708	1,299	1,801	17,915
Col %	1.0	3.7	5.4	9.3	8.6	7.5	6.3	7.0
Diseases of the genitourinary system								
Visits	209	364	2,926	3,508	2,449	997	1,770	12,223
Col %	1.4	1.8	6.0	5.0	4.5	5.7	6.2	4.8
Mental disorders								
Visits	12	411	2,431	3,793	2,615	359	468	10,089
Col %	0.1	2.1	5.0	5.4	4.8	2.1	1.6	4.0
Diseases of the skin and subcutaneous tissue								
Visits	364	458	1,495	2,579	1,968	553	674	8,091
Col %	2.5	2.3	3.1	3.6	3.6	3.2	2.3	3.2
Infectious and parasitic diseases								
Visits	564	394	819	769	628	237	328	3,739
Col %	3.9	2.0	1.7	1.1	1.1	1.4	1.1	1.5

Table E4
Clinical Classifications Software (CCS) High Level Diagnosis Groups by Age
2007 VT Hospital ED Visits, Includes VT Residents and Non-Residents
Number of Visits, Row and Column Percents

Diagnosis Group	Age Group							Total
	Under 5	5-14	15-24	25-44	45-64	65-74	75+	
Endocrine, nutritional, metabolic and immunity disorders								
Visits	161	103	321	561	899	473	926	3,444
Col %	1.1	0.5	0.7	0.8	1.6	2.7	3.2	1.4
Contraception and complications of pregnancy and childbirth								
Visits	1	1	1,003	850	6	0	0	1,861
Col %	0.0	0.0	2.1	1.2	0.0	0.0	0.0	0.7
Residual codes, unclassified, all Ecodes								
Visits	75	47	198	394	444	178	438	1,774
Col %	0.5	0.2	0.4	0.6	0.8	1.0	1.5	0.7
Neoplasms								
Visits	6	8	20	85	338	206	279	942
Col %	0.0	0.0	0.0	0.1	0.6	1.2	1.0	0.4
Diseases of the blood and blood-forming organs								
Visits	17	17	31	51	143	102	195	556
Col %	0.1	0.1	0.1	0.1	0.3	0.6	0.7	0.2
Conditions originating in the perinatal period								
Visits	216	0	4	1	0	0	0	221
Col %	1.5	0.0	0.0	0.0	0.0	0.0	0.0	0.1
Congenital anomalies								
Visits	31	5	8	19	17	5	5	90
Col %	0.2	0.0	0.0	0.0	0.0	0.0	0.0	0.0
Total								
Visits	14,593	19,679	48,633	70,713	54,876	17,373	28,722	254,589
Col %	100.0	100.0	100.0	100.0	100.0	100.0	100.0	100.0

Emergency department visits include all hospital records (outpatient and inpatient) which originated in the ED.

Inpatient discharges originating in the Emergency Department (23,825 for 2007) are reported here as well as in the hospital inpatient utilization report.

Inpatient discharges exclude newborns (MDC 15). 43 ED records with missing or invalid diagnosis codes are excluded from this analysis.

Table E5
Clinical Classifications Software (CCS) High Level Diagnosis Groups by Sex and Age
2007 VT Hospital ED Visits, Includes VT Residents and Non-Residents
Number of Visits, Row and Column Percents

Diagnosis Group	Males					Total for Males	Females					Total for Both Sexes
	Under 15	15-44	45-64	65+	Females		Under 15	15-44	45-64	65+	Females	
Injury and poisoning												
Visits	8,264	23,030	7,820	3,721	42,835	6,207	16,740	7,234	5,599	35,780	78,615	
Row %	10.5	29.3	9.9	4.7	54.5	7.9	21.3	9.2	7.1	45.5	100.0	
Diseases of the respiratory system												
Visits	3,140	4,928	2,624	3,185	13,877	2,510	7,136	3,192	3,620	16,458	30,335	
Row %	10.4	16.2	8.7	10.5	45.7	8.3	23.5	10.5	11.9	54.3	100.0	
Symptoms, signs and ill-defined conditions												
Visits	2,300	4,440	2,177	1,672	10,589	2,214	7,872	2,921	2,398	15,405	25,994	
Row %	8.8	17.1	8.4	6.4	40.7	8.5	30.3	11.2	9.2	59.3	100.0	
Diseases of the digestive system												
Visits	878	5,162	2,093	1,565	9,698	657	5,564	2,213	2,232	10,666	20,364	
Row %	4.3	25.3	10.3	7.7	47.6	3.2	27.3	10.9	11.0	52.4	100.0	
Diseases of the nervous system and sense organs												
Visits	1,870	3,597	1,748	980	8,195	1,736	5,928	2,494	1,493	11,651	19,846	
Row %	9.4	18.1	8.8	4.9	41.3	8.7	29.9	12.6	7.5	58.7	100.0	
Diseases of the circulatory system												
Visits	87	2,025	3,430	3,660	9,202	68	1,824	2,712	4,676	9,280	18,482	
Row %	0.5	11.0	18.6	19.8	49.8	0.4	9.9	14.7	25.3	50.2	100.0	
Musculoskeletal system and connective tissue												
Visits	466	4,399	2,359	1,173	8,397	410	4,829	2,349	1,927	9,515	17,912	
Row %	2.6	24.6	13.2	6.5	46.9	2.3	27.0	13.1	10.8	53.1	100.0	
Diseases of the genitourinary system												
Visits	179	1,420	1,147	1,434	4,180	394	5,014	1,301	1,333	8,042	12,222	
Row %	1.5	11.6	9.4	11.7	34.2	3.2	41.0	10.6	10.9	65.8	100.0	
Mental disorders												
Visits	222	2,812	1,298	332	4,664	201	3,412	1,317	495	5,425	10,089	
Row %	2.2	27.9	12.9	3.3	46.2	2.0	33.8	13.1	4.9	53.8	100.0	
Diseases of the skin and subcutaneous tissue												
Visits	425	2,235	1,175	607	4,442	397	1,839	793	620	3,649	8,091	
Row %	5.3	27.6	14.5	7.5	54.9	4.9	22.7	9.8	7.7	45.1	100.0	
Infectious and parasitic diseases												
Visits	499	704	303	246	1,752	459	884	324	319	1,986	3,738	
Row %	13.3	18.8	8.1	6.6	46.9	12.3	23.6	8.7	8.5	53.1	100.0	

Table E5
Clinical Classifications Software (CCS) High Level Diagnosis Groups by Sex and Age
2007 VT Hospital ED Visits, Includes VT Residents and Non-Residents
Number of Visits, Row and Column Percents

Diagnosis Group	Males					Total for Males	Females					Total for Both Sexes
	Under 15	15-44	45-64	65+	Females		Under 15	15-44	45-64	65+	Total for Females	
Endocrine, nutritional, metabolic and immunity disorders												
Visits	135	388	517	567	1,607	129	494	382	832	1,837	3,444	
Row %	3.9	11.3	15.0	16.5	46.7	3.7	14.3	11.1	24.2	53.3	100.0	
Contraception and complications of pregnancy and childbirth												
Visits	1	1	0	0	2	1	1,852	6	0	1,859	1,861	
Row %	0.1	0.1	0.0	0.0	0.1	0.1	99.5	0.3	0.0	99.9	100.0	
Residual codes, unclassified, all Ecodes												
Visits	63	263	228	265	819	59	329	216	351	955	1,774	
Row %	3.6	14.8	12.9	14.9	46.2	3.3	18.5	12.2	19.8	53.8	100.0	
Neoplasms												
Visits	7	53	142	256	458	7	52	196	229	484	942	
Row %	0.7	5.6	15.1	27.2	48.6	0.7	5.5	20.8	24.3	51.4	100.0	
Diseases of the blood and blood-forming organs												
Visits	16	34	73	135	258	18	48	70	162	298	556	
Row %	2.9	6.1	13.1	24.3	46.4	3.2	8.6	12.6	29.1	53.6	100.0	
Conditions originating in the perinatal period												
Visits	102	1	0	0	103	113	4	0	0	117	220	
Row %	46.4	0.5	0.0	0.0	46.8	51.4	1.8	0.0	0.0	53.2	100.0	
Congenital anomalies												
Visits	24	16	9	6	55	12	11	8	4	35	90	
Row %	26.7	17.8	10.0	6.7	61.1	13.3	12.2	8.9	4.4	38.9	100.0	
Total												
Visits	18,678	55,508	27,143	19,804	121,133	15,592	63,832	27,728	26,290	133,442	254,575	
Row %	7.3	21.8	10.7	7.8	47.6	6.1	25.1	10.9	10.3	52.4	100.0	

Fourteen records with missing values for sex were excluded from the above totals.

Emergency department visits include all hospital records (outpatient and inpatient) which originated in the ED.

Inpatient discharges originating in the Emergency Department (23,825 for 2007) are reported here as well as in the hospital inpatient utilization report.

Inpatient discharges exclude newborns (MDC 15). 43 ED records with missing or invalid diagnosis codes are excluded from this analysis.

Table E5
Clinical Classifications Software (CCS) High Level Diagnosis Groups by Sex and Age
2007 VT Hospital ED Visits, Includes VT Residents and Non-Residents
Number of Visits, Row and Column Percents

Diagnosis Group	Males					Total for Males	Females					Total for Both Sexes
	Under 15	15-44	45-64	65+	Females		Under 15	15-44	45-64	65+	Total for Females	
Injury and poisoning												
Visits	8,264	23,030	7,820	3,721	42,835	6,207	16,740	7,234	5,599	35,780	78,615	
Col %	44.2	41.5	28.8	18.8	35.4	39.8	26.2	26.1	21.3	26.8	30.9	
Diseases of the respiratory system												
Visits	3,140	4,928	2,624	3,185	13,877	2,510	7,136	3,192	3,620	16,458	30,335	
Col %	16.8	8.9	9.7	16.1	11.5	16.1	11.2	11.5	13.8	12.3	11.9	
Symptoms, signs and ill-defined conditions												
Visits	2,300	4,440	2,177	1,672	10,589	2,214	7,872	2,921	2,398	15,405	25,994	
Col %	12.3	8.0	8.0	8.4	8.7	14.2	12.3	10.5	9.1	11.5	10.2	
Diseases of the digestive system												
Visits	878	5,162	2,093	1,565	9,698	657	5,564	2,213	2,232	10,666	20,364	
Col %	4.7	9.3	7.7	7.9	8.0	4.2	8.7	8.0	8.5	8.0	8.0	
Diseases of the nervous system and sense organs												
Visits	1,870	3,597	1,748	980	8,195	1,736	5,928	2,494	1,493	11,651	19,846	
Col %	10.0	6.5	6.4	4.9	6.8	11.1	9.3	9.0	5.7	8.7	7.8	
Diseases of the circulatory system												
Visits	87	2,025	3,430	3,660	9,202	68	1,824	2,712	4,676	9,280	18,482	
Col %	0.5	3.6	12.6	18.5	7.6	0.4	2.9	9.8	17.8	7.0	7.3	
Musculoskeletal system and connective tissue												
Visits	466	4,399	2,359	1,173	8,397	410	4,829	2,349	1,927	9,515	17,912	
Col %	2.5	7.9	8.7	5.9	6.9	2.6	7.6	8.5	7.3	7.1	7.0	
Diseases of the genitourinary system												
Visits	179	1,420	1,147	1,434	4,180	394	5,014	1,301	1,333	8,042	12,222	
Col %	1.0	2.6	4.2	7.2	3.5	2.5	7.9	4.7	5.1	6.0	4.8	
Mental disorders												
Visits	222	2,812	1,298	332	4,664	201	3,412	1,317	495	5,425	10,089	
Col %	1.2	5.1	4.8	1.7	3.9	1.3	5.3	4.7	1.9	4.1	4.0	
Diseases of the skin and subcutaneous tissue												
Visits	425	2,235	1,175	607	4,442	397	1,839	793	620	3,649	8,091	
Col %	2.3	4.0	4.3	3.1	3.7	2.5	2.9	2.9	2.4	2.7	3.2	
Infectious and parasitic diseases												
Visits	499	704	303	246	1,752	459	884	324	319	1,986	3,738	
Col %	2.7	1.3	1.1	1.2	1.4	2.9	1.4	1.2	1.2	1.5	1.5	

Table E5
Clinical Classifications Software (CCS) High Level Diagnosis Groups by Sex and Age
2007 VT Hospital ED Visits, Includes VT Residents and Non-Residents
Number of Visits, Row and Column Percents

Diagnosis Group	Males					Total for Males	Females					Total for Both Sexes
	Under 15	15-44	45-64	65+	Females		Under 15	15-44	45-64	65+	Total for Females	
Endocrine, nutritional, metabolic and immunity disorders												
Visits	135	388	517	567	1,607	129	494	382	832	1,837	3,444	
Col %	0.7	0.7	1.9	2.9	1.3	0.8	0.8	1.4	3.2	1.4	1.4	
Contraception and complications of pregnancy and childbirth												
Visits	1	1	0	0	2	1	1,852	6	0	1,859	1,861	
Col %	0.0	0.0	0.0	0.0	0.0	0.0	2.9	0.0	0.0	1.4	0.7	
Residual codes, unclassified, all Ecodes												
Visits	63	263	228	265	819	59	329	216	351	955	1,774	
Col %	0.3	0.5	0.8	1.3	0.7	0.4	0.5	0.8	1.3	0.7	0.7	
Neoplasms												
Visits	7	53	142	256	458	7	52	196	229	484	942	
Col %	0.0	0.1	0.5	1.3	0.4	0.0	0.1	0.7	0.9	0.4	0.4	
Diseases of the blood and blood-forming organs												
Visits	16	34	73	135	258	18	48	70	162	298	556	
Col %	0.1	0.1	0.3	0.7	0.2	0.1	0.1	0.3	0.6	0.2	0.2	
Conditions originating in the perinatal period												
Visits	102	1	0	0	103	113	4	0	0	117	220	
Col %	0.5	0.0	0.0	0.0	0.1	0.7	0.0	0.0	0.0	0.1	0.1	
Congenital anomalies												
Visits	24	16	9	6	55	12	11	8	4	35	90	
Col %	0.1	0.0	0.0	0.0	0.0	0.1	0.0	0.0	0.0	0.0	0.0	
Total												
Visits	18,678	55,508	27,143	19,804	121,133	15,592	63,832	27,728	26,290	133,442	254,575	
Col %	100.0	100.0	100.0	100.0	100.0	100.0	100.0	100.0	100.0	100.0	100.0	

Fourteen records with missing values for sex were excluded from the above totals.

Emergency department visits include all hospital records (outpatient and inpatient) which originated in the ED.

Inpatient discharges originating in the Emergency Department (23,825 for 2007) are reported here as well as in the hospital inpatient utilization report.

Inpatient discharges exclude newborns (MDC 15). 43 ED records with missing or invalid diagnosis codes are excluded from this analysis.

Table E6
Clinical Classifications Software (CCS) High Level Diagnosis Groups by Primary Payer
2007 VT Hospital ED Visits, Includes VT Residents and Non-Residents
Number of Visits and Row Percents

Diagnosis Group	Medicare	Medicaid	Other Gov't	Work. Comp.	Private Ins.	Other	Unknown	Total
Injury and poisoning								
Visits	11,394	18,146	689	6,035	31,486	10,757	112	78,619
Row %	14.5	23.1	0.9	7.7	40.0	13.7	0.1	100.0
Diseases of the respiratory system								
Visits	8,350	8,597	228	66	9,356	3,689	50	30,336
Row %	27.5	28.3	0.8	0.2	30.8	12.2	0.2	100.0
Symptoms, signs and ill-defined conditions								
Visits	5,314	7,824	245	229	9,133	3,210	39	25,994
Row %	20.4	30.1	0.9	0.9	35.1	12.3	0.2	100.0
Diseases of the digestive system								
Visits	4,869	5,859	126	43	5,957	3,474	36	20,364
Row %	23.9	28.8	0.6	0.2	29.3	17.1	0.2	100.0
Diseases of the nervous system and sense organs								
Visits	3,736	6,090	175	219	7,186	2,410	31	19,847
Row %	18.8	30.7	0.9	1.1	36.2	12.1	0.2	100.0
Diseases of the circulatory system								
Visits	9,161	1,952	138	49	5,864	1,278	42	18,484
Row %	49.6	10.6	0.7	0.3	31.7	6.9	0.2	100.0
Musculoskeletal system and connective tissue								
Visits	4,338	4,725	108	843	5,485	2,385	31	17,915
Row %	24.2	26.4	0.6	4.7	30.6	13.3	0.2	100.0
Diseases of the genitourinary system								
Visits	3,231	3,011	92	16	4,322	1,530	21	12,223
Row %	26.4	24.6	0.8	0.1	35.4	12.5	0.2	100.0
Mental disorders								
Visits	2,201	3,659	53	15	2,531	1,620	10	10,089
Row %	21.8	36.3	0.5	0.1	25.1	16.1	0.1	100.0
Diseases of the skin and subcutaneous tissue								
Visits	1,759	2,157	58	103	2,678	1,328	8	8,091
Row %	21.7	26.7	0.7	1.3	33.1	16.4	0.1	100.0
Infectious and parasitic diseases								
Visits	694	1,176	30	35	1,298	501	5	3,739
Row %	18.6	31.5	0.8	0.9	34.7	13.4	0.1	100.0

Table E6
Clinical Classifications Software (CCS) High Level Diagnosis Groups by Primary Payer
2007 VT Hospital ED Visits, Includes VT Residents and Non-Residents
Number of Visits and Row Percents

Diagnosis Group	Medicare	Medicaid	Other Gov't	Work. Comp.	Private Ins.	Other	Unknown	Total
Endocrine, nutritional, metabolic and immunity disorders								
Visits	1,663	639	16	3	861	254	8	3,444
Row %	48.3	18.6	0.5	0.1	25.0	7.4	0.2	100.0
Contraception and complications of pregnancy and childbirth								
Visits	26	940	15	6	622	250	2	1,861
Row %	1.4	50.5	0.8	0.3	33.4	13.4	0.1	100.0
Residual codes, unclassified, all Ecodes								
Visits	756	359	9	77	436	134	3	1,774
Row %	42.6	20.2	0.5	4.3	24.6	7.6	0.2	100.0
Neoplasms								
Visits	504	124	5	2	256	50	1	942
Row %	53.5	13.2	0.5	0.2	27.2	5.3	0.1	100.0
Diseases of the blood and blood-forming organs								
Visits	320	79	4	0	139	14	0	556
Row %	57.6	14.2	0.7	0.0	25.0	2.5	0.0	100.0
Conditions originating in the perinatal period								
Visits	0	129	2	1	59	30	0	221
Row %	0.0	58.4	0.9	0.5	26.7	13.6	0.0	100.0
Congenital anomalies								
Visits	12	30	1	0	35	12	0	90
Row %	13.3	33.3	1.1	0.0	38.9	13.3	0.0	100.0
Total								
Visits	58,328	65,496	1,994	7,742	87,704	32,926	399	254,589
Row %	22.9	25.7	0.8	3.0	34.4	12.9	0.2	100.0

"Other" payer includes self-pay, no charge, and other sources of payment

Emergency department visits include all hospital records (outpatient and inpatient) which originated in the ED.

Inpatient discharges originating in the Emergency Department (23,825 for 2007) are reported here as well as in the hospital inpatient utilization report.

Inpatient discharges exclude newborns (MDC 15). 43 ED records with missing or invalid diagnosis codes are excluded from this analysis.

Table E7
Primary Payer by Age
2007 VT Hospital ED Visits, Includes VT Residents and Non-Residents
Number of Visits and Column Percents

Primary Payer	Age Group							Total
	Under 5	5-14	15-24	25-44	45-64	65-74	75+	
Medicare								
Visits	1	1	538	5,627	9,573	15,033	27,555	58,328
Column %	0.0	0.0	1.1	8.0	17.4	86.5	95.9	22.9
Medicaid								
Visits	8,881	9,267	16,649	21,338	9,151	131	79	65,496
Column %	60.9	47.1	34.2	30.2	16.7	0.8	0.3	25.7
Other Gov't								
Visits	131	224	497	485	572	29	56	1,994
Column %	0.9	1.1	1.0	0.7	1.0	0.2	0.2	0.8
Work. Comp.								
Visits	1	4	1,691	3,624	2,268	134	20	7,742
Column %	0.0	0.0	3.5	5.1	4.1	0.8	0.1	3.0
Private Ins.								
Visits	4,341	8,664	19,402	24,970	27,655	1,830	842	87,704
Column %	29.7	44.0	39.9	35.3	50.4	10.5	2.9	34.4
Other								
Visits	1,223	1,488	9,799	14,549	5,564	169	134	32,926
Column %	8.4	7.6	20.1	20.6	10.1	1.0	0.5	12.9
Unknown								
Visits	15	31	57	120	93	47	36	399
Column %	0.1	0.2	0.1	0.2	0.2	0.3	0.1	0.2
Total								
Visits	14,593	19,679	48,633	70,713	54,876	17,373	28,722	254,589
Column %	100.0	100.0	100.0	100.0	100.0	100.0	100.0	100.0

"Other" payer includes self-pay, no charge, and other sources of payment

Emergency department visits include all hospital records (outpatient and inpatient) which originated in the ED.

Inpatient discharges originating in the Emergency Department (23,825 for 2007) are reported here as well as in the hospital inpatient utilization report.

Inpatient discharges exclude newborns (MDC 15). 43 ED records with missing or invalid diagnosis codes are excluded from this analysis.

Table E8a
Emergency Department Visits by Data Year
2003-2007 VT Hospital ED Visits, Includes VT Residents and Non-Residents
Number of Visits and Row Percents

Inpatient Discharges Originating in ED

		BRAT	CVMC	COPL	FAHC	GIFF	GRAC	MT.A.	NCTY	NEVT	NWST	PORT	RRMC	SWVT	SPRF	TOTAL
2003	Count	1,080	2,042	629	8,044	474	2	74	1,093	814	1,492	805	3,859	3,007	1,450	24,865
	Row %	4.3	8.2	2.5	32.4	1.9	0.0	0.3	4.4	3.3	6.0	3.2	15.5	12.1	5.8	100.0
2004	Count	1,110	2,148	614	7,945	501	0	59	850	711	1,327	746	4,010	2,821	1,315	24,157
	Row %	4.6	8.9	2.5	32.9	2.1	0.0	0.2	3.5	2.9	5.5	3.1	16.6	11.7	5.4	100.0
2005	Count	1,182	2,092	471	7,684	458	1	66	381	586	1,173	821	4,136	2,987	1,250	23,288
	Row %	5.1	9.0	2.0	33.0	2.0	0.0	0.3	1.6	2.5	5.0	3.5	17.8	12.8	5.4	100.0
2006	Count	1,274	2,199	193	8,007	453	2	46	268	252	1,188	289	3,975	3,327	1,118	22,591
	Row %	5.6	9.7	0.9	35.4	2.0	0.0	0.2	1.2	1.1	5.3	1.3	17.6	14.7	4.9	100.0
2007	Count	1,190	2,290	196	8,219	629	1	61	297	318	1,339	239	4,134	3,451	1,461	23,825
	Row %	5.0	9.6	0.8	34.5	2.6	0.0	0.3	1.2	1.3	5.6	1.0	17.4	14.5	6.1	100.0

Emergency Dept. (ED) Visits, Not Admitted

		BRAT	CVMC	COPL	FAHC	GIFF	GRAC	MT.A.	NCTY	NEVT	NWST	PORT	RRMC	SWVT	SPRF	TOTAL
2003	Count	8,714	18,072	10,550	41,980	5,585	1,938	5,047	8,521	9,122	20,938	11,337	27,991	16,774	10,458	197,027
	Row %	4.4	9.2	5.4	21.3	2.8	1.0	2.6	4.3	4.6	10.6	5.8	14.2	8.5	5.3	100.0
2004	Count	9,528	18,264	10,422	40,532	5,563	2,043	5,105	9,310	9,022	21,454	11,437	28,220	17,136	10,999	199,035
	Row %	4.8	9.2	5.2	20.4	2.8	1.0	2.6	4.7	4.5	10.8	5.7	14.2	8.6	5.5	100.0
2005	Count	10,579	23,445	11,206	43,420	5,901	2,049	5,754	10,653	9,659	23,345	12,221	29,537	17,406	11,454	216,629
	Row %	4.9	10.8	5.2	20.0	2.7	0.9	2.7	4.9	4.5	10.8	5.6	13.6	8.0	5.3	100.0
2006	Count	10,682	25,546	11,567	44,913	6,088	2,165	5,647	11,184	10,089	23,513	13,024	30,441	17,529	13,616	226,004
	Row %	4.7	11.3	5.1	19.9	2.7	1.0	2.5	4.9	4.5	10.4	5.8	13.5	7.8	6.0	100.0
2007	Count	11,015	25,414	11,557	46,055	5,948	2,431	5,273	12,307	10,498	25,664	12,719	29,585	18,238	14,060	230,764
	Row %	4.8	11.0	5.0	20.0	2.6	1.1	2.3	5.3	4.5	11.1	5.5	12.8	7.9	6.1	100.0

Table E8a
Emergency Department Visits by Data Year
2003-2007 VT Hospital ED Visits, Includes VT Residents and Non-Residents
Number of Visits and Row Percents

All ED Visits, Including Those Admitted

		BRAT	CVMC	COPL	FAHC	GIFF	GRAC	MT.A.	NCTY	NEVT	NWST	PORT	RRMC	SWVT	SPRF	TOTAL
2003	Count	9,794	20,114	11,179	50,024	6,059	1,940	5,121	9,614	9,936	22,430	12,142	31,850	19,781	11,908	221,892
	Row %	4.4	9.1	5.0	22.5	2.7	0.9	2.3	4.3	4.5	10.1	5.5	14.4	8.9	5.4	100.0
2004	Count	10,638	20,412	11,036	48,477	6,064	2,043	5,164	10,160	9,733	22,781	12,183	32,230	19,957	12,314	223,192
	Row %	4.8	9.1	4.9	21.7	2.7	0.9	2.3	4.6	4.4	10.2	5.5	14.4	8.9	5.5	100.0
2005	Count	11,761	25,537	11,677	51,104	6,359	2,050	5,820	11,034	10,245	24,518	13,042	33,673	20,393	12,704	239,917
	Row %	4.9	10.6	4.9	21.3	2.7	0.9	2.4	4.6	4.3	10.2	5.4	14.0	8.5	5.3	100.0
2006	Count	11,956	27,745	11,760	52,920	6,541	2,167	5,693	11,452	10,341	24,701	13,313	34,416	20,856	14,734	248,595
	Row %	4.8	11.2	4.7	21.3	2.6	0.9	2.3	4.6	4.2	9.9	5.4	13.8	8.4	5.9	100.0
2007	Count	12,205	27,704	11,753	54,274	6,577	2,432	5,334	12,604	10,816	27,003	12,958	33,719	21,689	15,521	254,589
	Row %	4.8	10.9	4.6	21.3	2.6	1.0	2.1	5.0	4.2	10.6	5.1	13.2	8.5	6.1	100.0

Emergency department visits include all hospital records (outpatient and inpatient) which originated in the ED.

Inpatient discharges originating in the Emergency Department are reported here as well as in the hospital inpatient utilization report.

Inpatient discharges exclude newborns (MDC 15). ED records with missing or invalid diagnosis codes are excluded from this analysis.

Table E8
Clinical Classifications Software (CCS) High Level Diagnosis Groups by Vermont Hospitals
2007 VT Hospital ED Visits, Includes VT Residents and Non-Residents
Number of Visits and Column Percents

	BRAT	CVMC	COPL	FAHC	GIFF	GRAC	MT.A	NCTY	NEVT	NWST	PORT	RRMC	SWVT	SPRF	Total
Injury and poisoning															
Visits	4,228	6,846	4,462	17,316	1,946	895	1,730	3,801	3,295	8,117	4,094	10,652	6,694	4,543	78,619
Col %	34.6	24.7	38.0	31.9	29.6	36.8	32.4	30.2	30.5	30.1	31.6	31.6	30.9	29.3	30.9
Diseases of the respiratory system															
Visits	1,509	3,328	1,446	4,839	831	310	680	1,784	1,356	3,807	1,530	4,199	2,726	1,991	30,336
Col %	12.4	12.0	12.3	8.9	12.6	12.7	12.7	14.2	12.5	14.1	11.8	12.5	12.6	12.8	11.9
Symptoms, signs and ill-defined conditions															
Visits	751	3,082	1,136	6,281	598	263	555	1,271	1,113	2,947	1,275	3,222	1,990	1,510	25,994
Col %	6.2	11.1	9.7	11.6	9.1	10.8	10.4	10.1	10.3	10.9	9.8	9.6	9.2	9.7	10.2
Diseases of the digestive system															
Visits	1,161	2,145	771	4,200	609	126	379	860	894	2,087	1,209	2,822	1,816	1,285	20,364
Col %	9.5	7.7	6.6	7.7	9.3	5.2	7.1	6.8	8.3	7.7	9.3	8.4	8.4	8.3	8.0
Diseases of the nervous system and sense organs															
Visits	902	2,264	945	4,041	563	207	364	1,052	980	2,346	1,019	2,474	1,455	1,235	19,847
Col %	7.4	8.2	8.0	7.4	8.6	8.5	6.8	8.3	9.1	8.7	7.9	7.3	6.7	8.0	7.8
Diseases of the circulatory system															
Visits	716	1,913	580	4,661	468	166	391	833	739	1,584	759	2,581	1,905	1,188	18,484
Col %	5.9	6.9	4.9	8.6	7.1	6.8	7.3	6.6	6.8	5.9	5.9	7.7	8.8	7.7	7.3
Musculoskeletal system and connective tissue															
Visits	737	3,317	723	2,591	640	170	360	996	703	2,152	992	2,186	1,444	904	17,915
Col %	6.0	12.0	6.2	4.8	9.7	7.0	6.7	7.9	6.5	8.0	7.7	6.5	6.7	5.8	7.0
Diseases of the genitourinary system															
Visits	541	1,086	499	2,582	293	74	239	598	585	1,421	684	1,577	1,217	827	12,223
Col %	4.4	3.9	4.2	4.8	4.5	3.0	4.5	4.7	5.4	5.3	5.3	4.7	5.6	5.3	4.8
Mental disorders															
Visits	795	1,396	275	2,854	156	31	199	351	380	632	357	1,288	705	670	10,089
Col %	6.5	5.0	2.3	5.3	2.4	1.3	3.7	2.8	3.5	2.3	2.8	3.8	3.3	4.3	4.0
Diseases of the skin and subcutaneous tissue															
Visits	275	1,032	305	1,590	185	81	231	417	343	951	415	997	592	677	8,091
Col %	2.3	3.7	2.6	2.9	2.8	3.3	4.3	3.3	3.2	3.5	3.2	3.0	2.7	4.4	3.2
Infectious and parasitic diseases															
Visits	101	524	211	786	81	35	56	183	103	300	189	612	330	228	3,739
Col %	0.8	1.9	1.8	1.4	1.2	1.4	1.0	1.5	1.0	1.1	1.5	1.8	1.5	1.5	1.5

Table E8
Clinical Classifications Software (CCS) High Level Diagnosis Groups by Vermont Hospitals
2007 VT Hospital ED Visits, Includes VT Residents and Non-Residents
Number of Visits and Column Percents

	BRAT	CVMC	COPL	FAHC	GIFF	GRAC	MT.A	NCTY	NEVT	NWST	PORT	RRMC	SWVT	SPRF	Total
Endocrine, nutritional, metabolic and immunity disorders															
Visits	227	306	162	839	90	47	80	163	104	298	169	447	340	172	3,444
Col %	1.9	1.1	1.4	1.5	1.4	1.9	1.5	1.3	1.0	1.1	1.3	1.3	1.6	1.1	1.4
Contraception and complications of pregnancy and childbirth															
Visits	80	105	105	740	34	3	9	99	46	98	81	222	146	93	1,861
Col %	0.7	0.4	0.9	1.4	0.5	0.1	0.2	0.8	0.4	0.4	0.6	0.7	0.7	0.6	0.7
Residual codes, unclassified, all Ecodes															
Visits	62	212	71	409	46	12	24	107	111	133	128	226	147	86	1,774
Col %	0.5	0.8	0.6	0.8	0.7	0.5	0.4	0.8	1.0	0.5	1.0	0.7	0.7	0.6	0.7
Neoplasms															
Visits	74	78	20	310	20	4	23	52	24	56	14	123	102	42	942
Col %	0.6	0.3	0.2	0.6	0.3	0.2	0.4	0.4	0.2	0.2	0.1	0.4	0.5	0.3	0.4
Diseases of the blood and blood-forming organs															
Visits	26	50	18	145	17	5	7	24	22	49	28	66	51	48	556
Col %	0.2	0.2	0.2	0.3	0.3	0.2	0.1	0.2	0.2	0.2	0.2	0.2	0.2	0.3	0.2
Conditions originating in the perinatal period															
Visits	16	17	22	42	0	3	4	6	15	22	13	22	21	18	221
Col %	0.1	0.1	0.2	0.1	0.0	0.1	0.1	0.0	0.1	0.1	0.1	0.1	0.1	0.1	0.1
Congenital anomalies															
Visits	4	3	2	48	0	0	3	7	3	3	2	3	8	4	90
Col %	0.0	0.0	0.0	0.1	0.0	0.0	0.1	0.1	0.0	0.0	0.0	0.0	0.0	0.0	0.0
Total															
Visits	12,205	27,704	11,753	54,274	6,577	2,432	5,334	12,604	10,816	27,003	12,958	33,719	21,689	15,521	254,589
Col %	100.0	100.0	100.0	100.0	100.0	100.0	100.0	100.0	100.0	100.0	100.0	100.0	100.0	100.0	100.0

Emergency department visits include all hospital records (outpatient and inpatient) which originated in the ED.

Inpatient discharges originating in the Emergency Department (23,825 for 2007) are reported here as well as in the hospital inpatient utilization report.

Inpatient discharges exclude newborns (MDC 15). 43 ED records with missing or invalid diagnosis codes are excluded from this analysis.

Table E9
Primary Payer by Vermont Hospitals
2007 VT Hospital ED Visits, Includes VT Residents and Non-Residents
Number of Visits and Column Percents

	BRAT	CVMC	COPL	FAHC	GIFF	GRAC	MT.A	NCTY	NEVT	NWST	PORT	RRMC	SWVT	SPRF	Total
Medicare															
Visits	2,824	6,208	2,321	11,468	1,537	563	1,449	3,335	2,280	5,582	2,673	7,996	5,942	4,150	58,328
Col %	23.1	22.4	19.7	21.1	23.4	23.1	27.2	26.5	21.1	20.7	20.6	23.7	27.4	26.7	22.9
Medicaid															
Visits	2,825	7,634	2,660	11,965	1,765	529	997	4,069	2,960	8,461	3,247	9,410	4,893	4,081	65,496
Col %	23.1	27.6	22.6	22.0	26.8	21.8	18.7	32.3	27.4	31.3	25.1	27.9	22.6	26.3	25.7
Other Gov't															
Visits	61	287	3	817	46	5	22	163	27	103	83	222	119	36	1,994
Col %	0.5	1.0	0.0	1.5	0.7	0.2	0.4	1.3	0.2	0.4	0.6	0.7	0.5	0.2	0.8
Work. Comp.															
Visits	478	805	347	1,531	168	55	240	444	277	779	442	1,267	735	174	7,742
Col %	3.9	2.9	3.0	2.8	2.6	2.3	4.5	3.5	2.6	2.9	3.4	3.8	3.4	1.1	3.0
Private Ins.															
Visits	4,559	9,962	3,976	22,198	2,237	915	994	3,426	3,837	8,418	4,728	10,727	7,270	4,457	87,704
Col %	37.4	36.0	33.8	40.9	34.0	37.6	18.6	27.2	35.5	31.2	36.5	31.8	33.5	28.7	34.4
Other															
Visits	1,458	2,808	2,446	6,292	823	365	1,632	1,167	1,435	3,659	1,785	4,072	2,362	2,622	32,926
Col %	11.9	10.1	20.8	11.6	12.5	15.0	30.6	9.3	13.3	13.6	13.8	12.1	10.9	16.9	12.9
Unknown															
Visits	0	0	0	3	1	0	0	0	0	1	0	25	368	1	399
Col %	0.0	0.0	0.0	0.0	0.0	0.0	0.0	0.0	0.0	0.0	0.0	0.1	1.7	0.0	0.2
Total															
Visits	12,205	27,704	11,753	54,274	6,577	2,432	5,334	12,604	10,816	27,003	12,958	33,719	21,689	15,521	254,589
Col %	100.0	100.0	100.0	100.0	100.0	100.0	100.0	100.0	100.0	100.0	100.0	100.0	100.0	100.0	100.0

"Other" payer includes self-pay, no charge, and other sources of payment

Emergency department visits include all hospital records (outpatient and inpatient) which originated in the ED.

Inpatient discharges originating in the Emergency Department (23,825 for 2007) are reported here as well as in the hospital inpatient utilization report.

Inpatient discharges exclude newborns (MDC 15). 43 ED records with missing or invalid diagnosis codes are excluded from this analysis.

Table E10
Clinical Classifications Software (CCS) High Level Diagnosis Groups by VT, NH, MA and NY Hospitals
2007 Hospital ED Visits, VT Residents Only
Number of Visits and Column Percents

	BRAT	CVMC	COPL	DHMC	FAHC	GIFF	GRAC	MT.A	NCTY	NEVT	NWST	PORT	RRMC	SWVT	SPRF	Oth NH	MA	NY	Total
Injury and poisoning																			
Visits	3,001	6,493	4,289	2,773	15,816	1,809	711	1,326	3,453	3,024	7,867	3,562	9,182	4,688	3,485	3,373	807	489	76,148
Col %	33.2	24.5	37.7	23.8	31.4	28.8	34.8	31.8	29.1	29.6	29.8	31.0	30.4	29.9	27.3	28.2	34.3	37.4	29.8
Diseases of the respiratory system																			
Visits	1,117	3,163	1,397	1,231	4,575	808	258	534	1,692	1,299	3,734	1,358	3,860	2,045	1,721	1,933	247	115	31,087
Col %	12.4	11.9	12.3	10.6	9.1	12.9	12.6	12.8	14.2	12.7	14.2	11.8	12.8	13.0	13.5	16.2	10.5	8.8	12.2
Symptoms, signs and ill-defined conditions																			
Visits	577	2,979	1,098	1,192	5,918	574	238	452	1,210	1,056	2,886	1,157	2,903	1,434	1,276	1,087	207	118	26,362
Col %	6.4	11.2	9.6	10.2	11.8	9.1	11.7	10.8	10.2	10.3	10.9	10.1	9.6	9.1	10.0	9.1	8.8	9.0	10.3
Diseases of the digestive system																			
Visits	895	2,060	756	913	3,932	592	110	288	835	853	2,046	1,081	2,605	1,334	1,076	928	150	103	20,557
Col %	9.9	7.8	6.6	7.8	7.8	9.4	5.4	6.9	7.0	8.4	7.8	9.4	8.6	8.5	8.4	7.8	6.4	7.9	8.0
Diseases of the nervous system and sense organs																			
Visits	666	2,168	928	971	3,748	541	183	290	1,005	937	2,307	905	2,260	1,031	997	982	196	87	20,202
Col %	7.4	8.2	8.1	8.3	7.4	8.6	9.0	7.0	8.5	9.2	8.8	7.9	7.5	6.6	7.8	8.2	8.3	6.7	7.9
Diseases of the circulatory system																			
Visits	557	1,860	563	1,174	4,280	455	150	323	804	710	1,552	695	2,341	1,364	1,014	620	156	84	18,702
Col %	6.2	7.0	4.9	10.1	8.5	7.2	7.3	7.8	6.8	7.0	5.9	6.0	7.7	8.7	8.0	5.2	6.6	6.4	7.3
Musculoskeletal system and connective tissue																			
Visits	535	3,190	711	1,101	2,442	621	151	278	954	672	2,104	911	1,997	1,088	740	891	164	58	18,608
Col %	5.9	12.0	6.2	9.5	4.8	9.9	7.4	6.7	8.0	6.6	8.0	7.9	6.6	6.9	5.8	7.5	7.0	4.4	7.3
Diseases of the genitourinary system																			
Visits	379	1,036	489	537	2,432	284	58	183	570	558	1,384	586	1,426	860	704	537	112	60	12,195
Col %	4.2	3.9	4.3	4.6	4.8	4.5	2.8	4.4	4.8	5.5	5.3	5.1	4.7	5.5	5.5	4.5	4.8	4.6	4.8
Mental disorders																			
Visits	653	1,354	268	525	2,721	147	30	175	346	361	623	319	1,213	589	600	436	102	79	10,541
Col %	7.2	5.1	2.4	4.5	5.4	2.3	1.5	4.2	2.9	3.5	2.4	2.8	4.0	3.8	4.7	3.6	4.3	6.0	4.1
Diseases of the skin and subcutaneous tissue																			
Visits	206	1,000	296	351	1,457	174	63	153	388	328	931	349	917	455	551	520	82	38	8,259
Col %	2.3	3.8	2.6	3.0	2.9	2.8	3.1	3.7	3.3	3.2	3.5	3.0	3.0	2.9	4.3	4.4	3.5	2.9	3.2
Infectious and parasitic diseases																			
Visits	70	487	204	138	711	75	25	44	175	98	291	168	545	252	180	255	55	25	3,798
Col %	0.8	1.8	1.8	1.2	1.4	1.2	1.2	1.1	1.5	1.0	1.1	1.5	1.8	1.6	1.4	2.1	2.3	1.9	1.5

Table E10
Clinical Classifications Software (CCS) High Level Diagnosis Groups by VT, NH, MA and NY Hospitals
2007 Hospital ED Visits, VT Residents Only
Number of Visits and Column Percents

	BRAT	CVMC	COPL	DHMC	FAHC	GIFF	GRAC	MT.A	NCTY	NEVT	NWST	PORT	RRMC	SWVT	SPRF	Oth NH	MA	NY	Total
Endocrine, nutritional, metabolic and immunity disorders																			
Visits	181	300	154	176	782	89	41	63	158	97	288	154	386	225	148	124	23	20	3,409
Col %	2.0	1.1	1.4	1.5	1.6	1.4	2.0	1.5	1.3	1.0	1.1	1.3	1.3	1.4	1.2	1.0	1.0	1.5	1.3
Residual codes, unclassified, all Ecodes																			
Visits	51	206	69	334	383	45	10	18	104	110	129	119	208	107	70	87	26	7	2,083
Col %	0.6	0.8	0.6	2.9	0.8	0.7	0.5	0.4	0.9	1.1	0.5	1.0	0.7	0.7	0.5	0.7	1.1	0.5	0.8
Contraception and complications of pregnancy and childbirth																			
Visits	60	99	103	50	703	32	2	8	97	43	92	74	206	92	80	131	17	11	1,900
Col %	0.7	0.4	0.9	0.4	1.4	0.5	0.1	0.2	0.8	0.4	0.3	0.6	0.7	0.6	0.6	1.1	0.7	0.8	0.7
Neoplasms																			
Visits	61	75	20	108	256	20	4	20	49	23	55	12	114	71	40	22	2	7	959
Col %	0.7	0.3	0.2	0.9	0.5	0.3	0.2	0.5	0.4	0.2	0.2	0.1	0.4	0.5	0.3	0.2	0.1	0.5	0.4
Diseases of the blood and blood-forming organs																			
Visits	18	50	18	47	135	17	4	7	24	20	48	26	61	37	45	19	4	2	582
Col %	0.2	0.2	0.2	0.4	0.3	0.3	0.2	0.2	0.2	0.2	0.2	0.2	0.2	0.2	0.4	0.2	0.2	0.2	0.2
Conditions originating in the perinatal period																			
Visits	13	15	22	5	40	0	3	3	6	14	21	11	22	14	16	4	2	2	213
Col %	0.1	0.1	0.2	0.0	0.1	0.0	0.1	0.1	0.1	0.1	0.1	0.1	0.1	0.1	0.1	0.0	0.1	0.2	0.1
Congenital anomalies																			
Visits	3	3	2	17	30	0	0	2	7	3	3	2	3	4	4	2	0	1	86
Col %	0.0	0.0	0.0	0.1	0.1	0.0	0.0	0.0	0.1	0.0	0.0	0.0	0.0	0.0	0.0	0.0	0.0	0.1	0.0
Total																			
Visits	9,043	26,538	11,387	11,643	50,361	6,283	2,041	4,167	11,877	10,206	26,361	11,489	30,249	15,690	12,747	11,951	2,352	1,306	255,691
Col %	100	100	100	100	100	100	100	100	100	100	100	100	100	100	100	100	100	100	100

Massachusetts hospital data provided by the Massachusetts Division of Health Care Finance and Policy.

New Hampshire hospital data provided by the New Hampshire Department of Health and Human Services.

New York hospital data provided by the New York Department of Health.

Emergency department visits include all hospital records (outpatient and inpatient) which originated in the ED.

Inpatient discharges originating in the Emergency Department are reported here as well as in the hospital inpatient utilization report.

Inpatient discharges exclude newborns (MDC 15). 43 ED records with missing or invalid diagnosis codes are excluded from this analysis.

Table E11
Patient Origin Report, ED Visits by Hospital Service Area, 2007
Row Percents

HOSPITAL SERVICE AREA	BRAT	CVMC	COPL	DHMC	FAHC	GIFF	GRAC	MT.A	NCTY	NEVT	NWST	PORT	RRMC	SWVT	SPRF	nonVT	TOTAL
BARRE	21	22,647	340	339	941	687	2	9	30	121	38	22	55	2	16	492	25,762
(%)	0.1	87.9	1.3	1.3	3.7	2.7	0.0	0.0	0.1	0.5	0.1	0.1	0.2	0.0	0.1	1.9	100.0
BENNINGTON	432	4	4	53	30	12	116	1	4	3	7	17	417	13,134	35	1,020	15,289
(%)	2.8	0.0	0.0	0.3	0.2	0.1	0.8	0.0	0.0	0.0	0.0	0.1	2.7	85.9	0.2	6.7	100.0
BRATTLEBORO	7,242	16	6	107	30	6	1,539	7	9	3	7	5	49	18	438	588	10,070
(%)	71.9	0.2	0.1	1.1	0.3	0.1	15.3	0.1	0.1	0.0	0.1	0.0	0.5	0.2	4.3	5.8	100.0
BURLINGTON	38	245	882	103	38,847	30	2	10	71	47	3,272	727	136	8	24	762	45,204
(%)	0.1	0.5	2.0	0.2	85.9	0.1	0.0	0.0	0.2	0.1	7.2	1.6	0.3	0.0	0.1	1.7	100.0
MIDDLEBURY	6	21	10	32	1,063	13	2	5	10	3	23	8,649	246	0	1	146	10,230
(%)	0.1	0.2	0.1	0.3	10.4	0.1	0.0	0.0	0.1	0.0	0.2	84.5	2.4	0.0	0.0	1.4	100.0
MORRISVILLE	8	507	9,505	36	480	11	0	5	112	219	74	6	16	0	1	146	11,126
(%)	0.1	4.6	85.4	0.3	4.3	0.1	0.0	0.0	1.0	2.0	0.7	0.1	0.1	0.0	0.0	1.3	100.0
NEWPORT	8	73	291	123	126	8	0	4	11,149	487	43	4	13	0	5	974	13,308
(%)	0.1	0.5	2.2	0.9	0.9	0.1	0.0	0.0	83.8	3.7	0.3	0.0	0.1	0.0	0.0	7.3	100.0
RANDOLPH	7	336	5	395	54	4,059	2	14	3	6	4	72	190	0	19	166	5,332
(%)	0.1	6.3	0.1	7.4	1.0	76.1	0.0	0.3	0.1	0.1	0.1	1.4	3.6	0.0	0.4	3.1	100.0
RUTLAND	37	29	9	303	211	37	9	12	8	12	13	1,719	24,849	41	138	475	27,902
(%)	0.1	0.1	0.0	1.1	0.8	0.1	0.0	0.0	0.0	0.0	0.0	6.2	89.1	0.1	0.5	1.7	100.0
SPRINGFIELD	237	14	3	500	37	4	359	693	6	10	9	12	270	21	10,591	710	13,476
(%)	1.8	0.1	0.0	3.7	0.3	0.0	2.7	5.1	0.0	0.1	0.1	0.1	2.0	0.2	78.6	5.3	100.0
ST ALBANS	6	37	86	13	1,351	11	5	3	67	10	21,524	21	27	0	4	183	23,348
(%)	0.0	0.2	0.4	0.1	5.8	0.0	0.0	0.0	0.3	0.0	92.2	0.1	0.1	0.0	0.0	0.8	100.0
ST JOHNSBURY	4	90	48	210	45	19	3	2	112	8,754	8	1	14	0	8	1,863	11,181
(%)	0.0	0.8	0.4	1.9	0.4	0.2	0.0	0.0	1.0	78.3	0.1	0.0	0.1	0.0	0.1	16.7	100.0
WHITE RIVER JCT	20	280	14	7,362	61	774	1	3,352	15	235	21	21	197	0	210	7,047	19,610
(%)	0.1	1.4	0.1	37.5	0.3	3.9	0.0	17.1	0.1	1.2	0.1	0.1	1.0	0.0	1.1	35.9	100.0
Total	8,066	24,299	11,203	9,576	43,276	5,671	2,040	4,117	11,596	9,910	25,043	11,276	26,479	13,224	11,490	14,572	231,838
(%)	3.5	10.5	4.8	4.1	18.7	2.4	0.9	1.8	5.0	4.3	10.8	4.9	11.4	5.7	5.0	6.3	100.0

Column headers denote hospitals, key to hospital abbreviations can be found in Appendix E4.

Table E11
Patient Origin Report, ED Visits by Hospital Service Area and Ziptown, 2007
Row Percents

BARRE ZIP TOWN	BRAT	CVMC	COPL	DHMC	FAHC	GIFF	GRAC	MT.A	NCTY	NEVT	NWST	PORT	RRMC	SWVT	SPRF	nonVT	TOTAL
Calais +	1	786	79	13	24	9	0	0	4	11	0	1	0	0	0	13	941
(%)	0.1	83.5	8.4	1.4	2.6	1.0	0.0	0.0	0.4	1.2	0.0	0.1	0.0	0.0	0.0	1.4	100.0
Marshfield +	2	565	34	9	9	4	0	0	3	52	0	1	0	0	1	10	690
(%)	0.3	81.9	4.9	1.3	1.3	0.6	0.0	0.0	0.4	7.5	0.0	0.1	0.0	0.0	0.1	1.4	100.0
Montpelier +	15	14,862	79	133	332	150	1	6	15	31	18	11	32	1	7	172	15,865
(%)	0.1	93.7	0.5	0.8	2.1	0.9	0.0	0.0	0.1	0.2	0.1	0.1	0.2	0.0	0.0	1.1	100.0
Moretown	0	260	1	7	33	9	0	0	0	1	0	1	2	0	0	9	323
(%)	0.0	80.5	0.3	2.2	10.2	2.8	0.0	0.0	0.0	0.3	0.0	0.3	0.6	0.0	0.0	2.8	100.0
Northfield +	0	1,623	11	31	62	323	1	0	1	7	6	4	6	0	5	50	2,130
(%)	0.0	76.2	0.5	1.5	2.9	15.2	0.0	0.0	0.0	0.3	0.3	0.2	0.3	0.0	0.2	2.3	100.0
Plainfield	2	608	5	1	16	4	0	0	0	4	0	0	2	0	0	6	648
(%)	0.3	93.8	0.8	0.2	2.5	0.6	0.0	0.0	0.0	0.6	0.0	0.0	0.3	0.0	0.0	0.9	100.0
Topsham	0	227	0	82	3	2	0	0	0	2	0	0	0	0	2	144	462
(%)	0.0	49.1	0.0	17.7	0.6	0.4	0.0	0.0	0.0	0.4	0.0	0.0	0.0	0.0	0.4	31.2	100.0
Waitsfield +	0	627	10	5	83	26	0	0	0	2	1	0	2	0	0	38	794
(%)	0.0	79.0	1.3	0.6	10.5	3.3	0.0	0.0	0.0	0.3	0.1	0.0	0.3	0.0	0.0	4.8	100.0
Waterbury +	1	1,334	104	14	344	4	0	1	3	11	12	2	6	1	1	33	1,871
(%)	0.1	71.3	5.6	0.7	18.4	0.2	0.0	0.1	0.2	0.6	0.6	0.1	0.3	0.1	0.1	1.8	100.0
Williamston +	0	1,755	17	44	35	156	0	2	4	0	1	2	5	0	0	17	2,038
(%)	0.0	86.1	0.8	2.2	1.7	7.7	0.0	0.1	0.2	0.0	0.0	0.1	0.2	0.0	0.0	0.8	100.0
AREA TOTAL	21	22,647	340	339	941	687	2	9	30	121	38	22	55	2	16	492	25,762
(%)	0.1	87.9	1.3	1.3	3.7	2.7	0.0	0.0	0.1	0.5	0.1	0.1	0.2	0.0	0.1	1.9	100.0

Table E11
Patient Origin Report, ED Visits by Hospital Service Area and Ziptown, 2007
Row Percents

BENNINGTON		BRAT	CVMC	COPL	DHMC	FAHC	GIFF	GRAC	MT.A	NCTY	NEVT	NWST	PORT	RRMC	SWVT	SPRF	nonVT	TOTAL
Arlington +		0	0	0	6	4	4	4	0	0	0	0	3	22	731	6	25	805
(%)		0.0	0.0	0.0	0.7	0.5	0.5	0.5	0.0	0.0	0.0	0.0	0.4	2.7	90.8	0.7	3.1	100.0
Bennington +		9	3	1	13	12	7	3	1	1	3	5	6	53	10,851	6	420	11,394
(%)		0.1	0.0	0.0	0.1	0.1	0.1	0.0	0.0	0.0	0.0	0.0	0.1	0.5	95.2	0.1	3.7	100.0
Dorset +		0	1	0	8	2	0	2	0	0	0	1	3	118	232	5	24	396
(%)		0.0	0.3	0.0	2.0	0.5	0.0	0.5	0.0	0.0	0.0	0.3	0.8	29.8	58.6	1.3	6.1	100.0
Dover +		119	0	1	1	1	0	80	0	1	0	1	0	1	111	4	18	338
(%)		35.2	0.0	0.3	0.3	0.3	0.0	23.7	0.0	0.3	0.0	0.3	0.0	0.3	32.8	1.2	5.3	100.0
Manchester		6	0	2	20	6	1	5	0	1	0	0	5	218	790	12	43	1,109
(%)		0.5	0.0	0.2	1.8	0.5	0.1	0.5	0.0	0.1	0.0	0.0	0.5	19.7	71.2	1.1	3.9	100.0
Readsboro +		15	0	0	1	0	0	0	0	0	0	0	0	1	115	0	394	526
(%)		2.9	0.0	0.0	0.2	0.0	0.0	0.0	0.0	0.0	0.0	0.0	0.0	0.2	21.9	0.0	74.9	100.0
Whitingham		129	0	0	3	3	0	7	0	1	0	0	0	1	103	1	53	301
(%)		42.9	0.0	0.0	1.0	1.0	0.0	2.3	0.0	0.3	0.0	0.0	0.0	0.3	34.2	0.3	17.6	100.0
Wilmington +		154	0	0	1	2	0	15	0	0	0	0	0	3	201	1	43	420
(%)		36.7	0.0	0.0	0.2	0.5	0.0	3.6	0.0	0.0	0.0	0.0	0.0	0.7	47.9	0.2	10.2	100.0
AREA TOTAL		432	4	4	53	30	12	116	1	4	3	7	17	417	13,134	35	1,020	15,289
(%)		2.8	0.0	0.0	0.3	0.2	0.1	0.8	0.0	0.0	0.0	0.0	0.1	2.7	85.9	0.2	6.7	100.0

Table E11
Patient Origin Report, ED Visits by Hospital Service Area and Ziptown, 2007
Row Percents

BRATTLEBORO

ZIP TOWN	BRAT	CVMC	COPL	DHMC	FAHC	GIFF	GRAC	MT.A	NCTY	NEVT	NWST	PORT	RRMC	SWVT	SPRF	nonVT	TOTAL
Brattleboro +	5,579	10	5	47	25	4	126	3	6	0	4	4	23	17	46	269	6,168
(%)	90.5	0.2	0.1	0.8	0.4	0.1	2.0	0.0	0.1	0.0	0.1	0.1	0.4	0.3	0.7	4.4	100.0
Jamaica +	91	2	0	10	0	0	518	0	0	0	0	0	15	0	41	33	710
(%)	12.8	0.3	0.0	1.4	0.0	0.0	73.0	0.0	0.0	0.0	0.0	0.0	2.1	0.0	5.8	4.6	100.0
Newfane +	316	1	0	11	0	0	821	0	3	2	0	0	3	1	32	45	1,235
(%)	25.6	0.1	0.0	0.9	0.0	0.0	66.5	0.0	0.2	0.2	0.0	0.0	0.2	0.1	2.6	3.6	100.0
Vernon	497	0	0	4	2	1	8	0	0	0	1	0	1	0	3	64	581
(%)	85.5	0.0	0.0	0.7	0.3	0.2	1.4	0.0	0.0	0.0	0.2	0.0	0.2	0.0	0.5	11.0	100.0
Westminster +	759	3	1	35	3	1	66	4	0	1	2	1	7	0	316	177	1,376
(%)	55.2	0.2	0.1	2.5	0.2	0.1	4.8	0.3	0.0	0.1	0.1	0.1	0.5	0.0	23.0	12.9	100.0
AREA TOTAL	7,242	16	6	107	30	6	1,539	7	9	3	7	5	49	18	438	588	10,070
(%)	71.9	0.2	0.1	1.1	0.3	0.1	15.3	0.1	0.1	0.0	0.1	0.0	0.5	0.2	4.3	5.8	100.0

BURLINGTON

ZIP TOWN	BRAT	CVMC	COPL	DHMC	FAHC	GIFF	GRAC	MT.A	NCTY	NEVT	NWST	PORT	RRMC	SWVT	SPRF	nonVT	TOTAL
Burlington	12	42	44	31	13,497	7	0	3	7	14	107	31	30	8	7	170	14,010
(%)	0.1	0.3	0.3	0.2	96.3	0.0	0.0	0.0	0.0	0.1	0.8	0.2	0.2	0.1	0.0	1.2	100.0
Cambridge +	2	11	703	4	346	0	0	0	9	3	263	1	1	0	0	12	1,355
(%)	0.1	0.8	51.9	0.3	25.5	0.0	0.0	0.0	0.7	0.2	19.4	0.1	0.1	0.0	0.0	0.9	100.0
Charlotte	0	3	0	3	495	2	0	0	1	1	2	37	7	0	0	19	570
(%)	0.0	0.5	0.0	0.5	86.8	0.4	0.0	0.0	0.2	0.2	0.4	6.5	1.2	0.0	0.0	3.3	100.0
Colchester	2	19	7	4	3,818	4	0	1	3	3	81	15	10	0	3	72	4,042
(%)	0.0	0.5	0.2	0.1	94.5	0.1	0.0	0.0	0.1	0.1	2.0	0.4	0.2	0.0	0.1	1.8	100.0
Essex	9	30	14	15	3,339	3	0	1	17	2	72	9	8	0	2	84	3,605
(%)	0.2	0.8	0.4	0.4	92.6	0.1	0.0	0.0	0.5	0.1	2.0	0.2	0.2	0.0	0.1	2.3	100.0
Fairfax	2	5	17	0	303	2	0	0	4	2	1,109	4	4	0	0	15	1,467
(%)	0.1	0.3	1.2	0.0	20.7	0.1	0.0	0.0	0.3	0.1	75.6	0.3	0.3	0.0	0.0	1.0	100.0
Ferrisburgh	0	3	0	0	293	2	0	0	0	0	0	340	6	0	0	11	655
(%)	0.0	0.5	0.0	0.0	44.7	0.3	0.0	0.0	0.0	0.0	0.0	51.9	0.9	0.0	0.0	1.7	100.0

Table E11
Patient Origin Report, ED Visits by Hospital Service Area and Ziptown, 2007
Row Percents

BURLINGTON ZIP TOWN	BRAT	CVMC	COPL	DHMC	FAHC	GIFF	GRAC	MT.A	NCTY	NEVT	NWST	PORT	RRMC	SWVT	SPRF	nonVT	TOTAL
Grand Isle + (%)	2 0.3	4 0.6	3 0.4	2 0.3	523 76.4	0 0.0	0 0.0	0 0.0	0 0.0	2 0.3	136 19.9	2 0.3	0 0.0	0 0.0	0 0.0	11 1.6	685 100.0
Hinesburg (%)	0 0.0	13 1.4	5 0.5	3 0.3	865 90.7	2 0.2	0 0.0	0 0.0	3 0.3	0 0.0	9 0.9	29 3.0	4 0.4	0 0.0	0 0.0	21 2.2	954 100.0
Huntington + (%)	0 0.0	7 1.0	4 0.6	3 0.4	513 71.3	0 0.0	1 0.1	1 0.1	1 0.1	3 0.4	7 1.0	165 22.9	2 0.3	0 0.0	0 0.0	12 1.7	719 100.0
Jericho + (%)	2 0.1	11 0.8	31 2.3	7 0.5	1,185 87.8	3 0.2	0 0.0	2 0.1	4 0.3	2 0.1	38 2.8	5 0.4	3 0.2	0 0.0	2 0.1	55 4.1	1,350 100.0
Milton (%)	2 0.1	8 0.2	6 0.2	5 0.1	2,534 65.5	2 0.1	0 0.0	0 0.0	4 0.1	0 0.0	1,246 32.2	4 0.1	8 0.2	0 0.0	0 0.0	48 1.2	3,867 100.0
Monkton (%)	0 0.0	2 2.8	0 0.0	0 0.0	26 36.1	1 1.4	0 0.0	0 0.0	0 0.0	0 0.0	0 0.0	36 50.0	7 9.7	0 0.0	0 0.0	0 0.0	72 100.0
Richmond (%)	0 0.0	26 3.5	6 0.8	4 0.5	677 91.6	0 0.0	0 0.0	0 0.0	2 0.3	0 0.0	0 0.0	4 0.5	1 0.1	0 0.0	0 0.0	19 2.6	739 100.0
S. Burlington (%)	0 0.0	25 0.6	17 0.4	13 0.3	3,701 94.1	2 0.1	0 0.0	1 0.0	5 0.1	7 0.2	40 1.0	14 0.4	14 0.4	0 0.0	5 0.1	88 2.2	3,932 100.0
Shelburne (%)	0 0.0	5 0.3	3 0.2	4 0.3	1,355 94.4	0 0.0	1 0.1	1 0.1	2 0.1	1 0.1	6 0.4	12 0.8	4 0.3	0 0.0	2 0.1	39 2.7	1,435 100.0
South Hero (%)	0 0.0	3 0.8	2 0.6	1 0.3	283 78.6	0 0.0	0 0.0	0 0.0	1 0.3	2 0.6	53 14.7	2 0.6	1 0.3	0 0.0	0 0.0	12 3.3	360 100.0
Westford (%)	0 0.0	1 0.3	2 0.7	0 0.0	234 76.2	0 0.0	0 0.0	0 0.0	1 0.3	0 0.0	57 18.6	3 1.0	3 1.0	0 0.0	0 0.0	6 2.0	307 100.0
Williston + (%)	4 0.2	11 0.5	16 0.8	1 0.0	1,930 94.5	0 0.0	0 0.0	0 0.0	3 0.1	2 0.1	17 0.8	10 0.5	9 0.4	0 0.0	0 0.0	40 2.0	2,043 100.0
Winooski (%)	1 0.0	16 0.5	2 0.1	3 0.1	2,930 96.5	0 0.0	0 0.0	0 0.0	4 0.1	3 0.1	29 1.0	4 0.1	14 0.5	0 0.0	3 0.1	28 0.9	3,037 100.0
AREA TOTAL (%)	38 0.1	245 0.5	882 2.0	103 0.2	38,847 85.9	30 0.1	2 0.0	10 0.0	71 0.2	47 0.1	3,272 7.2	727 1.6	136 0.3	8 0.0	24 0.1	762 1.7	45,204 100.0

Table E11
Patient Origin Report, ED Visits by Hospital Service Area and Ziptown, 2007
Row Percents

MIDDLEBURY																	
ZIP TOWN	BRAT	CVMC	COPL	DHMC	FAHC	GIFF	GRAC	MT.A	NCTY	NEVT	NWST	PORT	RRMC	SWVT	SPRF	nonVT	TOTAL
Bridport	0	0	0	2	29	1	0	1	0	0	2	383	14	0	0	6	438
(%)	0.0	0.0	0.0	0.5	6.6	0.2	0.0	0.2	0.0	0.0	0.5	87.4	3.2	0.0	0.0	1.4	100.0
Bristol +	2	9	3	1	336	3	1	2	5	1	1	1,436	16	0	0	28	1,844
(%)	0.1	0.5	0.2	0.1	18.2	0.2	0.1	0.1	0.3	0.1	0.1	77.9	0.9	0.0	0.0	1.5	100.0
Middlebury +	1	2	5	10	163	4	0	1	2	1	6	3,970	77	0	1	52	4,295
(%)	0.0	0.0	0.1	0.2	3.8	0.1	0.0	0.0	0.0	0.0	0.1	92.4	1.8	0.0	0.0	1.2	100.0
New Haven	0	0	0	1	64	0	0	0	1	1	1	411	4	0	0	5	488
(%)	0.0	0.0	0.0	0.2	13.1	0.0	0.0	0.0	0.2	0.2	0.2	84.2	0.8	0.0	0.0	1.0	100.0
Orwell	0	0	0	3	9	0	0	0	0	0	0	254	75	0	0	8	349
(%)	0.0	0.0	0.0	0.9	2.6	0.0	0.0	0.0	0.0	0.0	0.0	72.8	21.5	0.0	0.0	2.3	100.0
Shoreham +	0	0	0	8	33	2	0	0	1	0	0	658	44	0	0	15	761
(%)	0.0	0.0	0.0	1.1	4.3	0.3	0.0	0.0	0.1	0.0	0.0	86.5	5.8	0.0	0.0	2.0	100.0
Vergennes +	3	10	2	7	429	3	1	1	1	0	13	1,537	16	0	0	32	2,055
(%)	0.1	0.5	0.1	0.3	20.9	0.1	0.0	0.0	0.0	0.0	0.6	74.8	0.8	0.0	0.0	1.6	100.0
AREA TOTAL	6	21	10	32	1,063	13	2	5	10	3	23	8,649	246	0	1	146	10,230
(%)	0.1	0.2	0.1	0.3	10.4	0.1	0.0	0.0	0.1	0.0	0.2	84.5	2.4	0.0	0.0	1.4	100.0
MORRISVILLE																	
ZIP TOWN	BRAT	CVMC	COPL	DHMC	FAHC	GIFF	GRAC	MT.A	NCTY	NEVT	NWST	PORT	RRMC	SWVT	SPRF	nonVT	TOTAL
Craftsbury	1	18	343	3	8	1	0	0	35	11	0	0	1	0	0	5	426
(%)	0.2	4.2	80.5	0.7	1.9	0.2	0.0	0.0	8.2	2.6	0.0	0.0	0.2	0.0	0.0	1.2	100.0
Eden +	0	18	700	1	60	1	0	0	11	1	37	0	1	0	0	14	844
(%)	0.0	2.1	82.9	0.1	7.1	0.1	0.0	0.0	1.3	0.1	4.4	0.0	0.1	0.0	0.0	1.7	100.0
Hardwick +	1	261	1,350	9	43	6	0	0	47	189	3	3	9	0	0	25	1,946
(%)	0.1	13.4	69.4	0.5	2.2	0.3	0.0	0.0	2.4	9.7	0.2	0.2	0.5	0.0	0.0	1.3	100.0
Hyde Park	0	14	1,071	3	48	2	0	0	2	4	5	2	1	0	1	9	1,162
(%)	0.0	1.2	92.2	0.3	4.1	0.2	0.0	0.0	0.2	0.3	0.4	0.2	0.1	0.0	0.1	0.8	100.0
Johnson	0	28	1,339	3	103	0	0	0	3	3	17	0	2	0	0	15	1,513
(%)	0.0	1.9	88.5	0.2	6.8	0.0	0.0	0.0	0.2	0.2	1.1	0.0	0.1	0.0	0.0	1.0	100.0
Morrisville +	6	103	3,363	10	97	1	0	3	13	9	7	0	0	0	0	36	3,648
(%)	0.2	2.8	92.2	0.3	2.7	0.0	0.0	0.1	0.4	0.2	0.2	0.0	0.0	0.0	0.0	1.0	100.0

Table E11
Patient Origin Report, ED Visits by Hospital Service Area and Ziptown, 2007
Row Percents

MORRISVILLE																	
ZIP TOWN	BRAT	CVMC	COPL	DHMC	FAHC	GIFF	GRAC	MT.A	NCTY	NEVT	NWST	PORT	RRMC	SWVT	SPRF	nonVT	TOTAL
Stowe	0	65	1,339	7	121	0	0	2	1	2	5	1	2	0	0	42	1,587
(%)	0.0	4.1	84.4	0.4	7.6	0.0	0.0	0.1	0.1	0.1	0.3	0.1	0.1	0.0	0.0	2.6	100.0
AREA TOTAL	8	507	9,505	36	480	11	0	5	112	219	74	6	16	0	1	146	11,126
(%)	0.1	4.6	85.4	0.3	4.3	0.1	0.0	0.0	1.0	2.0	0.7	0.1	0.1	0.0	0.0	1.3	100.0
NEWPORT																	
ZIP TOWN	BRAT	CVMC	COPL	DHMC	FAHC	GIFF	GRAC	MT.A	NCTY	NEVT	NWST	PORT	RRMC	SWVT	SPRF	nonVT	TOTAL
Barton +	4	23	42	31	16	0	0	1	2,103	285	12	1	2	0	0	48	2,568
(%)	0.2	0.9	1.6	1.2	0.6	0.0	0.0	0.0	81.9	11.1	0.5	0.0	0.1	0.0	0.0	1.9	100.0
Canaan +	0	1	0	7	4	0	0	0	27	5	0	0	0	0	0	791	835
(%)	0.0	0.1	0.0	0.8	0.5	0.0	0.0	0.0	3.2	0.6	0.0	0.0	0.0	0.0	0.0	94.7	100.0
Irasburg +	0	7	81	8	9	1	0	0	532	20	0	1	0	0	0	2	661
(%)	0.0	1.1	12.3	1.2	1.4	0.2	0.0	0.0	80.5	3.0	0.0	0.2	0.0	0.0	0.0	0.3	100.0
Island Pond +	0	12	4	16	15	0	0	1	818	78	1	0	0	0	0	48	993
(%)	0.0	1.2	0.4	1.6	1.5	0.0	0.0	0.1	82.4	7.9	0.1	0.0	0.0	0.0	0.0	4.8	100.0
Lowell +	0	1	111	2	20	3	0	0	334	10	2	0	1	0	1	6	491
(%)	0.0	0.2	22.6	0.4	4.1	0.6	0.0	0.0	68.0	2.0	0.4	0.0	0.2	0.0	0.2	1.2	100.0
Newport +	4	27	38	55	49	4	0	2	6,477	84	18	2	9	0	4	68	6,841
(%)	0.1	0.4	0.6	0.8	0.7	0.1	0.0	0.0	94.7	1.2	0.3	0.0	0.1	0.0	0.1	1.0	100.0
Troy +	0	2	15	4	13	0	0	0	858	5	10	0	1	0	0	11	919
(%)	0.0	0.2	1.6	0.4	1.4	0.0	0.0	0.0	93.4	0.5	1.1	0.0	0.1	0.0	0.0	1.2	100.0
AREA TOTAL	8	73	291	123	126	8	0	4	11,149	487	43	4	13	0	5	974	13,308
(%)	0.1	0.5	2.2	0.9	0.9	0.1	0.0	0.0	83.8	3.7	0.3	0.0	0.1	0.0	0.0	7.3	100.0

Table E11
Patient Origin Report, ED Visits by Hospital Service Area and Ziptown, 2007
Row Percents

RANDOLPH																	
ZIP TOWN	BRAT	CVMC	COPL	DHMC	FAHC	GIFF	GRAC	MT.A	NCTY	NEVT	NWST	PORT	RRMC	SWVT	SPRF	nonVT	TOTAL
Bethel +	0	32	1	142	6	704	0	8	0	1	0	1	15	0	6	45	961
(%)	0.0	3.3	0.1	14.8	0.6	73.3	0.0	0.8	0.0	0.1	0.0	0.1	1.6	0.0	0.6	4.7	100.0
Brookfield	1	72	0	17	8	195	0	0	1	0	1	1	0	0	1	11	308
(%)	0.3	23.4	0.0	5.5	2.6	63.3	0.0	0.0	0.3	0.0	0.3	0.3	0.0	0.0	0.3	3.6	100.0
Chelsea	2	81	3	42	3	194	0	2	0	1	0	0	0	0	1	13	342
(%)	0.6	23.7	0.9	12.3	0.9	56.7	0.0	0.6	0.0	0.3	0.0	0.0	0.0	0.0	0.3	3.8	100.0
Pittsfield +	0	1	0	30	5	134	0	0	0	0	1	4	84	0	1	7	267
(%)	0.0	0.4	0.0	11.2	1.9	50.2	0.0	0.0	0.0	0.0	0.4	1.5	31.5	0.0	0.4	2.6	100.0
Randolph +	2	132	1	139	21	2,484	1	3	2	4	2	1	12	0	7	78	2,889
(%)	0.1	4.6	0.0	4.8	0.7	86.0	0.0	0.1	0.1	0.1	0.1	0.0	0.4	0.0	0.2	2.7	100.0
Rochester +	2	18	0	25	11	348	1	1	0	0	0	65	79	0	3	12	565
(%)	0.4	3.2	0.0	4.4	1.9	61.6	0.2	0.2	0.0	0.0	0.0	11.5	14.0	0.0	0.5	2.1	100.0
AREA TOTAL	7	336	5	395	54	4,059	2	14	3	6	4	72	190	0	19	166	5,332
(%)	0.1	6.3	0.1	7.4	1.0	76.1	0.0	0.3	0.1	0.1	0.1	1.4	3.6	0.0	0.4	3.1	100.0
RUTLAND																	
ZIP TOWN	BRAT	CVMC	COPL	DHMC	FAHC	GIFF	GRAC	MT.A	NCTY	NEVT	NWST	PORT	RRMC	SWVT	SPRF	nonVT	TOTAL
Brandon +	3	4	0	14	43	7	0	0	2	0	0	1,321	1,200	0	1	35	2,630
(%)	0.1	0.2	0.0	0.5	1.6	0.3	0.0	0.0	0.1	0.0	0.0	50.2	45.6	0.0	0.0	1.3	100.0
Clarendon +	1	3	0	13	7	1	0	0	0	1	0	8	1,242	0	6	11	1,293
(%)	0.1	0.2	0.0	1.0	0.5	0.1	0.0	0.0	0.0	0.1	0.0	0.6	96.1	0.0	0.5	0.9	100.0
Danby +	0	0	0	8	2	0	0	0	0	0	0	3	430	0	2	8	453
(%)	0.0	0.0	0.0	1.8	0.4	0.0	0.0	0.0	0.0	0.0	0.0	0.7	94.9	0.0	0.4	1.8	100.0
Fair Haven +	5	3	1	37	43	5	1	3	1	1	3	175	2,885	0	1	65	3,229
(%)	0.2	0.1	0.0	1.1	1.3	0.2	0.0	0.1	0.0	0.0	0.1	5.4	89.3	0.0	0.0	2.0	100.0
Mt. Holly	1	0	0	5	2	0	0	3	0	0	0	0	284	0	52	6	353
(%)	0.3	0.0	0.0	1.4	0.6	0.0	0.0	0.8	0.0	0.0	0.0	0.0	80.5	0.0	14.7	1.7	100.0

Table E11
Patient Origin Report, ED Visits by Hospital Service Area and Ziptown, 2007
Row Percents

RUTLAND																	
ZIP TOWN	BRAT	CVMC	COPL	DHMC	FAHC	GIFF	GRAC	MT.A	NCTY	NEVT	NWST	PORT	RRMC	SWVT	SPRF	nonVT	TOTAL
Pawlet	0	0	0	3	2	0	0	0	0	0	0	1	230	23	0	50	309
(%)	0.0	0.0	0.0	1.0	0.6	0.0	0.0	0.0	0.0	0.0	0.0	0.3	74.4	7.4	0.0	16.2	100.0
Pittsford +	0	3	0	22	11	0	0	1	0	1	1	70	1,437	0	2	37	1,585
(%)	0.0	0.2	0.0	1.4	0.7	0.0	0.0	0.1	0.0	0.1	0.1	4.4	90.7	0.0	0.1	2.3	100.0
Poultney	1	2	0	11	6	0	1	0	0	1	1	12	819	0	1	20	875
(%)	0.1	0.2	0.0	1.3	0.7	0.0	0.1	0.0	0.0	0.1	0.1	1.4	93.6	0.0	0.1	2.3	100.0
Proctor	1	0	0	8	3	1	0	0	0	0	0	8	764	0	5	9	799
(%)	0.1	0.0	0.0	1.0	0.4	0.1	0.0	0.0	0.0	0.0	0.0	1.0	95.6	0.0	0.6	1.1	100.0
Rutland +	22	8	5	135	78	19	4	5	3	6	7	93	12,631	18	53	183	13,270
(%)	0.2	0.1	0.0	1.0	0.6	0.1	0.0	0.0	0.0	0.0	0.1	0.7	95.2	0.1	0.4	1.4	100.0
Wallingford +	0	4	2	21	4	1	3	0	1	0	1	8	875	0	10	5	935
(%)	0.0	0.4	0.2	2.2	0.4	0.1	0.3	0.0	0.1	0.0	0.1	0.9	93.6	0.0	1.1	0.5	100.0
Wells +	3	2	1	10	0	0	0	0	0	0	0	4	476	0	0	29	525
(%)	0.6	0.4	0.2	1.9	0.0	0.0	0.0	0.0	0.0	0.0	0.0	0.8	90.7	0.0	0.0	5.5	100.0
West Rutland +	0	0	0	16	10	3	0	0	1	2	0	16	1,576	0	5	17	1,646
(%)	0.0	0.0	0.0	1.0	0.6	0.2	0.0	0.0	0.1	0.1	0.0	1.0	95.7	0.0	0.3	1.0	100.0
AREA TOTAL	37	29	9	303	211	37	9	12	8	12	13	1,719	24,849	41	138	475	27,902
(%)	0.1	0.1	0.0	1.1	0.8	0.1	0.0	0.0	0.0	0.0	0.0	6.2	89.1	0.1	0.5	1.7	100.0
SPRINGFIELD																	
ZIP TOWN	BRAT	CVMC	COPL	DHMC	FAHC	GIFF	GRAC	MT.A	NCTY	NEVT	NWST	PORT	RRMC	SWVT	SPRF	nonVT	TOTAL
Cavendish	0	0	0	27	3	0	1	32	0	0	0	0	34	0	342	23	462
(%)	0.0	0.0	0.0	5.8	0.6	0.0	0.2	6.9	0.0	0.0	0.0	0.0	7.4	0.0	74.0	5.0	100.0
Chester +	28	3	0	73	4	0	176	17	2	4	2	1	9	0	1,518	47	1,884
(%)	1.5	0.2	0.0	3.9	0.2	0.0	9.3	0.9	0.1	0.2	0.1	0.1	0.5	0.0	80.6	2.5	100.0
Londonderry +	10	1	1	18	4	0	69	4	0	0	0	2	45	21	391	32	598
(%)	1.7	0.2	0.2	3.0	0.7	0.0	11.5	0.7	0.0	0.0	0.0	0.3	7.5	3.5	65.4	5.4	100.0
Ludlow	3	2	1	26	2	2	0	21	0	0	1	4	128	0	422	49	661
(%)	0.5	0.3	0.2	3.9	0.3	0.3	0.0	3.2	0.0	0.0	0.2	0.6	19.4	0.0	63.8	7.4	100.0

Table E11
Patient Origin Report, ED Visits by Hospital Service Area and Ziptown, 2007
Row Percents

SPRINGFIELD																	
ZIP TOWN	BRAT	CVMC	COPL	DHMC	FAHC	GIFF	GRAC	MT.A	NCTY	NEVT	NWST	PORT	RRMC	SWVT	SPRF	nonVT	TOTAL
Rockingham	165	3	1	67	3	0	107	17	3	1	1	2	12	0	1,427	203	2,012
(%)	8.2	0.1	0.0	3.3	0.1	0.0	5.3	0.8	0.1	0.0	0.0	0.1	0.6	0.0	70.9	10.1	100.0
Springfield	28	4	0	232	15	1	5	207	1	5	5	3	30	0	6,112	238	6,886
(%)	0.4	0.1	0.0	3.4	0.2	0.0	0.1	3.0	0.0	0.1	0.1	0.0	0.4	0.0	88.8	3.5	100.0
Weathersfield	3	1	0	57	6	1	1	395	0	0	0	0	12	0	379	118	973
(%)	0.3	0.1	0.0	5.9	0.6	0.1	0.1	40.6	0.0	0.0	0.0	0.0	1.2	0.0	39.0	12.1	100.0
AREA TOTAL	237	14	3	500	37	4	359	693	6	10	9	12	270	21	10,591	710	13,476
(%)	1.8	0.1	0.0	3.7	0.3	0.0	2.7	5.1	0.0	0.1	0.1	0.1	2.0	0.2	78.6	5.3	100.0
ST ALBANS																	
ZIP TOWN	BRAT	CVMC	COPL	DHMC	FAHC	GIFF	GRAC	MT.A	NCTY	NEVT	NWST	PORT	RRMC	SWVT	SPRF	nonVT	TOTAL
Alburgh +	0	4	5	2	108	0	3	2	0	0	1,220	5	0	0	1	26	1,376
(%)	0.0	0.3	0.4	0.1	7.8	0.0	0.2	0.1	0.0	0.0	88.7	0.4	0.0	0.0	0.1	1.9	100.0
Bakersfield	0	0	5	0	16	1	0	0	0	1	200	0	0	0	0	4	227
(%)	0.0	0.0	2.2	0.0	7.0	0.4	0.0	0.0	0.0	0.4	88.1	0.0	0.0	0.0	0.0	1.8	100.0
Enosburgh +	1	2	41	2	123	2	1	0	22	4	2,214	4	4	0	0	33	2,453
(%)	0.0	0.1	1.7	0.1	5.0	0.1	0.0	0.0	0.9	0.2	90.3	0.2	0.2	0.0	0.0	1.3	100.0
Fairfield	0	2	12	1	68	2	0	0	2	0	774	1	1	0	0	12	875
(%)	0.0	0.2	1.4	0.1	7.8	0.2	0.0	0.0	0.2	0.0	88.5	0.1	0.1	0.0	0.0	1.4	100.0
Franklin	0	0	2	0	27	0	0	0	2	2	516	0	3	0	0	9	561
(%)	0.0	0.0	0.4	0.0	4.8	0.0	0.0	0.0	0.4	0.4	92.0	0.0	0.5	0.0	0.0	1.6	100.0
Richford +	0	2	5	0	74	0	0	1	19	0	1,270	1	0	0	0	9	1,381
(%)	0.0	0.1	0.4	0.0	5.4	0.0	0.0	0.1	1.4	0.0	92.0	0.1	0.0	0.0	0.0	0.7	100.0
Sheldon	0	1	2	0	70	0	0	0	0	1	794	0	0	0	0	5	873
(%)	0.0	0.1	0.2	0.0	8.0	0.0	0.0	0.0	0.0	0.1	91.0	0.0	0.0	0.0	0.0	0.6	100.0
St. Albans +	2	8	7	6	571	1	1	0	9	2	9,186	5	10	0	2	56	9,866
(%)	0.0	0.1	0.1	0.1	5.8	0.0	0.0	0.0	0.1	0.0	93.1	0.1	0.1	0.0	0.0	0.6	100.0
Swanton +	3	18	7	2	294	5	0	0	13	0	5,350	5	9	0	1	29	5,736
(%)	0.1	0.3	0.1	0.0	5.1	0.1	0.0	0.0	0.2	0.0	93.3	0.1	0.2	0.0	0.0	0.5	100.0
AREA TOTAL	6	37	86	13	1,351	11	5	3	67	10	21,524	21	27	0	4	183	23,348
(%)	0.0	0.2	0.4	0.1	5.8	0.0	0.0	0.0	0.3	0.0	92.2	0.1	0.1	0.0	0.0	0.8	100.0

Table E11
Patient Origin Report, ED Visits by Hospital Service Area and Ziptown, 2007
Row Percents

ST JOHNSBURY

ZIP TOWN	BRAT	CVMC	COPL	DHMC	FAHC	GIFF	GRAC	MT.A	NCTY	NEVT	NWST	PORT	RRMC	SWVT	SPRF	nonVT	TOTAL
Barnet	0	6	1	30	5	3	1	0	2	299	0	0	2	0	0	189	538
(%)	0.0	1.1	0.2	5.6	0.9	0.6	0.2	0.0	0.4	55.6	0.0	0.0	0.4	0.0	0.0	35.1	100.0
Burke +	0	4	8	31	3	3	0	1	31	1,007	3	0	1	0	4	1,042	2,138
(%)	0.0	0.2	0.4	1.4	0.1	0.1	0.0	0.0	1.4	47.1	0.1	0.0	0.0	0.0	0.2	48.7	100.0
Concord	0	2	3	7	6	2	1	0	12	430	2	0	0	0	0	145	610
(%)	0.0	0.3	0.5	1.1	1.0	0.3	0.2	0.0	2.0	70.5	0.3	0.0	0.0	0.0	0.0	23.8	100.0
Danville +	0	32	22	10	4	5	0	0	1	582	0	0	2	0	1	42	701
(%)	0.0	4.6	3.1	1.4	0.6	0.7	0.0	0.0	0.1	83.0	0.0	0.0	0.3	0.0	0.1	6.0	100.0
Lyndon +	1	15	4	48	11	4	1	0	17	2,221	1	0	3	0	1	107	2,434
(%)	0.0	0.6	0.2	2.0	0.5	0.2	0.0	0.0	0.7	91.2	0.0	0.0	0.1	0.0	0.0	4.4	100.0
Sheffield +	0	4	1	8	0	0	0	0	20	382	0	0	0	0	0	15	430
(%)	0.0	0.9	0.2	1.9	0.0	0.0	0.0	0.0	4.7	88.8	0.0	0.0	0.0	0.0	0.0	3.5	100.0
St. Johnsbury +	3	27	9	76	16	2	0	1	29	3,833	2	1	6	0	2	323	4,330
(%)	0.1	0.6	0.2	1.8	0.4	0.0	0.0	0.0	0.7	88.5	0.0	0.0	0.1	0.0	0.0	7.5	100.0
AREA TOTAL	4	90	48	210	45	19	3	2	112	8,754	8	1	14	0	8	1,863	11,181
(%)	0.0	0.8	0.4	1.9	0.4	0.2	0.0	0.0	1.0	78.3	0.1	0.0	0.1	0.0	0.1	16.7	100.0

WHITE RIVER JCT

ZIP TOWN	BRAT	CVMC	COPL	DHMC	FAHC	GIFF	GRAC	MT.A	NCTY	NEVT	NWST	PORT	RRMC	SWVT	SPRF	nonVT	TOTAL
Bradford	0	33	0	413	1	1	0	1	1	13	1	0	0	0	2	851	1,317
(%)	0.0	2.5	0.0	31.4	0.1	0.1	0.0	0.1	0.1	1.0	0.1	0.0	0.0	0.0	0.2	64.6	100.0
Bridgewater +	3	2	0	185	4	8	1	207	0	0	1	4	117	0	87	56	675
(%)	0.4	0.3	0.0	27.4	0.6	1.2	0.1	30.7	0.0	0.0	0.1	0.6	17.3	0.0	12.9	8.3	100.0
Corinth	2	81	0	195	2	9	0	2	3	0	1	1	0	0	0	237	533
(%)	0.4	15.2	0.0	36.6	0.4	1.7	0.0	0.4	0.6	0.0	0.2	0.2	0.0	0.0	0.0	44.5	100.0
Fairlee +	0	9	1	521	3	25	0	3	1	5	0	1	4	0	2	293	868
(%)	0.0	1.0	0.1	60.0	0.3	2.9	0.0	0.3	0.1	0.6	0.0	0.1	0.5	0.0	0.2	33.8	100.0
Grotton +	1	67	0	30	1	3	0	0	0	159	0	1	0	0	1	537	800
(%)	0.1	8.4	0.0	3.8	0.1	0.4	0.0	0.0	0.0	19.9	0.0	0.1	0.0	0.0	0.1	67.1	100.0

Table E11
Patient Origin Report, ED Visits by Hospital Service Area and Ziptown, 2007
Row Percents

WHITE RIVER JCT																	
ZIP TOWN	BRAT	CVMC	COPL	DHMC	FAHC	GIFF	GRAC	MT.A	NCTY	NEVT	NWST	PORT	RRMC	SWVT	SPRF	nonVT	TOTAL
Hartford +	4	12	3	2,819	11	28	0	150	1	2	3	1	17	0	33	1,907	4,991
(%)	0.1	0.2	0.1	56.5	0.2	0.6	0.0	3.0	0.0	0.0	0.1	0.0	0.3	0.0	0.7	38.2	100.0
Hartland	1	3	0	387	0	5	0	418	0	0	1	3	6	0	11	237	1,072
(%)	0.1	0.3	0.0	36.1	0.0	0.5	0.0	39.0	0.0	0.0	0.1	0.3	0.6	0.0	1.0	22.1	100.0
Newbury	1	9	0	108	3	1	0	3	0	17	0	0	0	0	1	1,068	1,211
(%)	0.1	0.7	0.0	8.9	0.2	0.1	0.0	0.2	0.0	1.4	0.0	0.0	0.0	0.0	0.1	88.2	100.0
Norwich	1	1	1	554	4	3	0	5	0	0	1	4	2	0	2	161	739
(%)	0.1	0.1	0.1	75.0	0.5	0.4	0.0	0.7	0.0	0.0	0.1	0.5	0.3	0.0	0.3	21.8	100.0
Royalton	2	13	1	339	4	465	0	16	1	2	4	1	6	0	1	108	963
(%)	0.2	1.3	0.1	35.2	0.4	48.3	0.0	1.7	0.1	0.2	0.4	0.1	0.6	0.0	0.1	11.2	100.0
Ryegate	0	18	1	20	4	1	0	0	0	32	1	0	2	0	0	599	678
(%)	0.0	2.7	0.1	2.9	0.6	0.1	0.0	0.0	0.0	4.7	0.1	0.0	0.3	0.0	0.0	88.3	100.0
Sharon	0	4	0	234	2	66	0	2	2	1	1	0	1	0	1	130	444
(%)	0.0	0.9	0.0	52.7	0.5	14.9	0.0	0.5	0.5	0.2	0.2	0.0	0.2	0.0	0.2	29.3	100.0
Thetford +	2	5	0	644	5	19	0	7	4	1	4	1	3	0	7	409	1,111
(%)	0.2	0.5	0.0	58.0	0.5	1.7	0.0	0.6	0.4	0.1	0.4	0.1	0.3	0.0	0.6	36.8	100.0
Tunbridge	0	17	0	81	3	124	0	3	0	1	1	0	1	0	2	39	272
(%)	0.0	6.3	0.0	29.8	1.1	45.6	0.0	1.1	0.0	0.4	0.4	0.0	0.4	0.0	0.7	14.3	100.0
Windsor +	2	3	2	379	11	1	0	2,323	0	1	0	2	13	0	57	274	3,068
(%)	0.1	0.1	0.1	12.4	0.4	0.0	0.0	75.7	0.0	0.0	0.0	0.1	0.4	0.0	1.9	8.9	100.0
Woodstock	1	3	5	453	3	15	0	212	2	1	2	2	25	0	3	141	868
(%)	0.1	0.3	0.6	52.2	0.3	1.7	0.0	24.4	0.2	0.1	0.2	0.2	2.9	0.0	0.3	16.2	100.0
AREA TOTAL	20	280	14	7,362	61	774	1	3,352	15	235	21	21	197	0	210	7,047	19,610
(%)	0.1	1.4	0.1	37.5	0.3	3.9	0.0	17.1	0.1	1.2	0.1	0.1	1.0	0.0	1.1	35.9	100.0

Table E12
Utilization by Hospital Service Area and Clinical Classification Software (CCS) High Level Diagnosis Group
ED Visits, Crude and Age-Adjusted Rates, 2007

ALL CATEGORIES

Hospital Service Area	ED Visits	ED Visits /1000 Population	Age_Adjusted Visits/1000 Population
Barre	25,762	388.2	391.6
Bennington	15,289	381.1	388.7
Brattleboro	10,070	319.5	325.8
Burlington	45,204	264.3	261.6
Middlebury	10,230	361.7	360.4
Morrisville	11,126	413.7	411.3
Newport	13,308	465.8	464.1
Randolph	5,332	366.5	368.9
Rutland	27,902	435.4	442.4
Springfield	13,476	475.9	487.8
St Albans	23,348	518.5	524.4
St Johnsbury	11,181	403.4	399.7
White River Jct	19,610	401.8	412.0
Totals	231,838	373.2	373.2

INFECTIOUS AND PARASITIC DISEASES

Hospital Service Area	ED Visits	ED Visits /1000 Population	Age_Adjusted Visits/1000 Population
Barre	460	6.9	7.0
Bennington	196	4.9	5.1
Brattleboro	84	2.7	2.8
Burlington	585	3.4	3.3
Middlebury	154	5.4	5.3
Morrisville	194	7.2	7.1
Newport	208	7.3	7.4
Randolph	62	4.3	4.4
Rutland	470	7.3	7.6
Springfield	192	6.8	7.2
St Albans	263	5.8	5.7
St Johnsbury	147	5.3	5.2
White River Jct	268	5.5	5.6
Totals	3,283	5.3	5.3

Table E12
Utilization by Hospital Service Area and Clinical Classification Software (CCS) High Level Diagnosis Group
ED Visits, Crude and Age-Adjusted Rates, 2007

NEOPLASMS

Hospital Service Area	ED Visits	ED Visits /1000 Population	Age_Adjusted Visits/1000 Population
Barre	42	0.6	0.6
Bennington	15	0.4	0.4
Brattleboro	35	1.1	1.1
Burlington	44	0.3	0.3
Middlebury	17	0.6	0.6
Morrisville	15	0.6	0.6
Newport	43	1.5	1.4
Randolph	12	0.8	0.8
Rutland	17	0.3	0.3
Springfield	22	0.8	0.7
St Albans	29	0.6	0.7
St Johnsbury	22	0.8	0.8
White River Jct	46	0.9	0.9
Totals	359	0.6	0.6

ENDOCRINE, NUTRITIONAL, METABOLIC AND IMMUNITY DISORDERS

Hospital Service Area	ED Visits	ED Visits /1000 Population	Age_Adjusted Visits/1000 Population
Barre	231	3.5	3.5
Bennington	157	3.9	3.6
Brattleboro	171	5.4	5.2
Burlington	521	3.0	3.3
Middlebury	129	4.6	4.8
Morrisville	142	5.3	5.4
Newport	164	5.7	5.3
Randolph	56	3.8	3.8
Rutland	234	3.7	3.5
Springfield	140	4.9	4.6
St Albans	222	4.9	5.2
St Johnsbury	115	4.1	4.0
White River Jct	203	4.2	4.0
Totals	2,485	4.0	4.0

Table E12
Utilization by Hospital Service Area and Clinical Classification Software (CCS) High Level Diagnosis Group
ED Visits, Crude and Age-Adjusted Rates, 2007

DISEASES OF THE BLOOD AND BLOOD-FORMING ORGANS

Hospital Service Area	ED Visits	ED Visits /1000 Population	Age_Adjusted Visits/1000 Population
Barre	32	0.5	0.5
Bennington	19	0.5	0.5
Brattleboro	21	0.7	0.7
Burlington	62	0.4	0.4
Middlebury	25	0.9	0.9
Morrisville	20	0.7	0.8
Newport	27	0.9	0.9
Randolph	8	0.5	0.5
Rutland	32	0.5	0.5
Springfield	21	0.7	0.6
St Albans	26	0.6	0.7
St Johnsbury	21	0.8	0.7
White River Jct	24	0.5	0.5
Totals	338	0.5	0.5

MENTAL DISORDERS

Hospital Service Area	ED Visits	ED Visits /1000 Population	Age_Adjusted Visits/1000 Population
Barre	890	13.4	13.5
Bennington	665	16.6	17.5
Brattleboro	640	20.3	20.8
Burlington	2,173	12.7	12.1
Middlebury	352	12.4	12.0
Morrisville	286	10.6	10.7
Newport	390	13.7	13.9
Randolph	145	10.0	10.0
Rutland	955	14.9	15.2
Springfield	579	20.4	22.0
St Albans	636	14.1	14.5
St Johnsbury	373	13.5	13.6
White River Jct	657	13.5	14.2
Totals	8,741	14.1	14.1

Table E12
Utilization by Hospital Service Area and Clinical Classification Software (CCS) High Level Diagnosis Group
ED Visits, Crude and Age-Adjusted Rates, 2007

DISEASES OF THE NERVOUS SYSTEM AND SENSE ORGANS

Hospital Service Area	ED Visits	ED Visits /1000 Population	Age_Adjusted Visits/1000 Population
Barre	2,307	34.8	35.1
Bennington	1,139	28.4	29.1
Brattleboro	812	25.8	26.4
Burlington	3,575	20.9	20.7
Middlebury	822	29.1	29.3
Morrisville	955	35.5	35.2
Newport	1,160	40.6	40.5
Randolph	495	34.0	34.3
Rutland	2,321	36.2	37.0
Springfield	1,145	40.4	42.0
St Albans	2,164	48.1	47.5
St Johnsbury	1,009	36.4	36.2
White River Jct	1,609	33.0	33.9
Totals	19,513	31.4	31.4

DISEASES OF THE CIRCULATORY SYSTEM

Hospital Service Area	ED Visits	ED Visits /1000 Population	Age_Adjusted Visits/1000 Population
Barre	1,570	23.7	23.5
Bennington	883	22.0	20.7
Brattleboro	544	17.3	16.4
Burlington	2,537	14.8	16.2
Middlebury	641	22.7	23.8
Morrisville	589	21.9	22.3
Newport	851	29.8	27.9
Randolph	298	20.5	19.8
Rutland	1,623	25.3	24.1
Springfield	879	31.0	28.4
St Albans	1,250	27.8	29.6
St Johnsbury	754	27.2	26.4
White River Jct	1,167	23.9	22.7
Totals	13,586	21.9	21.9

Table E12
Utilization by Hospital Service Area and Clinical Classification Software (CCS) High Level Diagnosis Group
ED Visits, Crude and Age-Adjusted Rates, 2007

DISEASES OF THE RESPIRATORY SYSTEM

Hospital Service Area	ED Visits	ED Visits /1000 Population	Age_Adjusted Visits/1000 Population
Barre	2,988	45.0	45.5
Bennington	1,792	44.7	45.3
Brattleboro	1,199	38.0	38.9
Burlington	4,143	24.2	24.2
Middlebury	1,156	40.9	41.2
Morrisville	1,382	51.4	50.9
Newport	1,881	65.8	65.4
Randolph	624	42.9	43.6
Rutland	3,274	51.1	52.2
Springfield	1,636	57.8	58.9
St Albans	3,094	68.7	69.5
St Johnsbury	1,462	52.8	52.0
White River Jct	2,746	56.3	57.7
Totals	27,377	44.1	44.1

DISEASES OF THE DIGESTIVE SYSTEM

Hospital Service Area	ED Visits	ED Visits /1000 Population	Age_Adjusted Visits/1000 Population
Barre	1,846	27.8	28.2
Bennington	1,034	25.8	26.8
Brattleboro	855	27.1	27.9
Burlington	2,928	17.1	16.9
Middlebury	937	33.1	33.1
Morrisville	757	28.1	27.7
Newport	889	31.1	30.9
Randolph	444	30.5	30.3
Rutland	2,125	33.2	34.0
Springfield	1,032	36.4	38.1
St Albans	1,686	37.4	38.1
St Johnsbury	866	31.2	31.0
White River Jct	1,364	27.9	29.3
Totals	16,763	27.0	27.0

Table E12
Utilization by Hospital Service Area and Clinical Classification Software (CCS) High Level Diagnosis Group
ED Visits, Crude and Age-Adjusted Rates, 2007

DISEASES OF THE GENITOURINARY SYSTEM

Hospital Service Area	ED Visits	ED Visits /1000 Population	Age_Adjusted Visits/1000 Population
Barre	1,010	15.2	15.4
Bennington	817	20.4	20.6
Brattleboro	397	12.6	12.9
Burlington	2,270	13.3	13.2
Middlebury	499	17.6	17.2
Morrisville	493	18.3	18.2
Newport	653	22.9	22.4
Randolph	240	16.5	16.3
Rutland	1,289	20.1	20.2
Springfield	714	25.2	26.3
St Albans	1,210	26.9	27.8
St Johnsbury	582	21.0	20.4
White River Jct	889	18.2	18.5
Totals	11,063	17.8	17.8

*CONTRACEPTION AND COMPLICATIONS OF PREGNANCY AND CHILDBIRTH Age-Adjusted Females

Hospital Service Area	ED Visits	ED Visits /1000 Population	Age_Adjusted Visits/1000 Population
Barre	125	3.7	4.0
Bennington	104	5.0	5.5
Brattleboro	61	3.8	4.2
Burlington	610	7.0	6.3
Middlebury	82	5.7	5.0
Morrisville	91	6.7	6.6
Newport	98	6.8	7.4
Randolph	27	3.7	3.9
Rutland	186	5.7	6.0
Springfield	94	6.5	7.8
St Albans	101	4.4	4.6
St Johnsbury	74	5.3	5.4
White River Jct	132	5.3	6.3
Totals	1,785	5.7	5.7

Table E12
Utilization by Hospital Service Area and Clinical Classification Software (CCS) High Level Diagnosis Group
ED Visits, Crude and Age-Adjusted Rates, 2007

DISEASES OF THE SKIN AND SUBCUTANEOUS TISSUE

Hospital Service Area	ED Visits	ED Visits /1000 Population	Age_Adjusted Visits/1000 Population
Barre	991	14.9	15.1
Bennington	453	11.3	11.6
Brattleboro	257	8.2	8.3
Burlington	1,380	8.1	7.9
Middlebury	310	11.0	11.0
Morrisville	299	11.1	11.0
Newport	436	15.3	15.2
Randolph	135	9.3	9.2
Rutland	868	13.5	13.8
Springfield	567	20.0	20.5
St Albans	850	18.9	19.2
St Johnsbury	364	13.1	13.1
White River Jct	786	16.1	16.3
Totals	7,696	12.4	12.4

MUSCULOSKELETAL SYSTEM AND CONNECTIVE TISSUE

Hospital Service Area	ED Visits	ED Visits /1000 Population	Age_Adjusted Visits/1000 Population
Barre	3,151	47.5	47.8
Bennington	1,176	29.3	29.7
Brattleboro	626	19.9	20.0
Burlington	2,483	14.5	14.8
Middlebury	759	26.8	27.1
Morrisville	705	26.2	26.2
Newport	1,114	39.0	38.8
Randolph	559	38.4	38.4
Rutland	2,093	32.7	32.8
Springfield	942	33.3	33.1
St Albans	1,928	42.8	43.2
St Johnsbury	781	28.2	27.9
White River Jct	1,741	35.7	36.4
Totals	18,058	29.1	29.1

Table E12
Utilization by Hospital Service Area and Clinical Classification Software (CCS) High Level Diagnosis Group
ED Visits, Crude and Age-Adjusted Rates, 2007

CONGENITAL ANOMALIES

Hospital Service Area	ED Visits	ED Visits /1000 Population	Age_Adjusted Visits/1000 Population
Barre	6	0.1	0.1
Bennington	3	0.1	0.1
Brattleboro	2	0.1	0.1
Burlington	13	0.1	0.1
Middlebury	2	0.1	0.1
Morrisville	5	0.2	0.2
Newport	7	0.2	0.2
Randolph	0	0.0	0.0
Rutland	3	0.0	0.0
Springfield	5	0.2	0.2
St Albans	2	0.0	0.0
St Johnsbury	4	0.1	0.1
White River Jct	7	0.1	0.1
Totals	59	0.1	0.1

CONDITIONS ORIGINATING IN THE PERINATAL PERIOD

Hospital Service Area	ED Visits	ED Visits /1000 Population	Age_Adjusted Visits/1000 Population
Barre	17	0.3	0.3
Bennington	18	0.4	0.5
Brattleboro	15	0.5	0.5
Burlington	42	0.2	0.2
Middlebury	9	0.3	0.3
Morrisville	19	0.7	0.7
Newport	9	0.3	0.3
Randolph	1	0.1	0.1
Rutland	23	0.4	0.4
Springfield	16	0.6	0.6
St Albans	19	0.4	0.4
St Johnsbury	13	0.5	0.4
White River Jct	12	0.2	0.3
Totals	213	0.3	0.3

Table E12
Utilization by Hospital Service Area and Clinical Classification Software (CCS) High Level Diagnosis Group
ED Visits, Crude and Age-Adjusted Rates, 2007

INJURY AND POISONING

Hospital Service Area	ED Visits	ED Visits /1000 Population	Age_Adjusted Visits/1000 Population
Barre	6,819	102.8	103.9
Bennington	5,157	128.5	132.4
Brattleboro	3,485	110.6	113.7
Burlington	15,664	91.6	89.1
Middlebury	3,152	111.4	109.3
Morrisville	3,965	147.4	146.4
Newport	3,854	134.9	136.7
Randolph	1,644	113.0	114.8
Rutland	9,223	143.9	147.5
Springfield	3,958	139.8	146.2
St Albans	7,019	155.9	155.7
St Johnsbury	3,293	118.8	118.9
White River Jct	5,601	114.8	118.9
Totals	72,834	117.2	117.2

SYMPTOMS, SIGNS AND ILL-DEFINED CONDITIONS

Hospital Service Area	ED Visits	ED Visits /1000 Population	Age_Adjusted Visits/1000 Population
Barre	3,061	46.1	46.6
Bennington	1,540	38.4	39.3
Brattleboro	798	25.3	25.9
Burlington	5,805	33.9	33.4
Middlebury	1,080	38.2	38.2
Morrisville	1,140	42.4	42.2
Newport	1,413	49.5	49.5
Randolph	523	35.9	36.6
Rutland	2,960	46.2	47.0
Springfield	1,444	51.0	51.6
St Albans	2,718	60.4	61.3
St Johnsbury	1,174	42.4	41.8
White River Jct	2,030	41.6	42.8
Totals	25,686	41.3	41.3

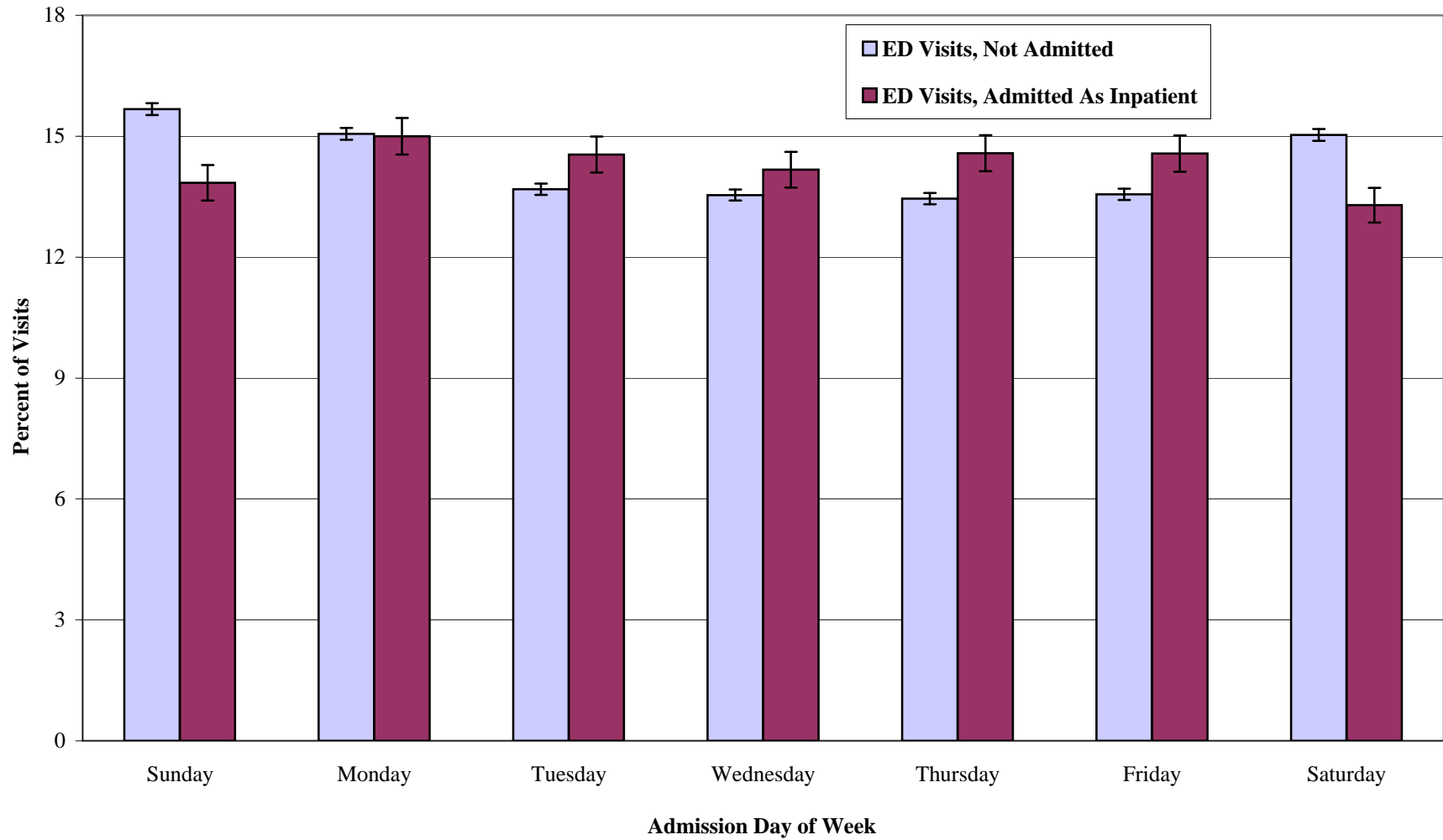
Table E12
Utilization by Hospital Service Area and Clinical Classification Software (CCS) High Level Diagnosis Group
ED Visits, Crude and Age-Adjusted Rates, 2007

RESIDUAL CODES, UNCLASSIFIED, ALL ECODES

Hospital Service Area	ED Visits	ED Visits /1000 Population	Age_Adjusted Visits/1000 Population
Barre	216	3.3	3.3
Bennington	121	3.0	2.9
Brattleboro	68	2.2	2.2
Burlington	369	2.2	2.4
Middlebury	104	3.7	3.7
Morrisville	69	2.6	2.6
Newport	111	3.9	3.8
Randolph	59	4.1	4.0
Rutland	206	3.2	3.1
Springfield	90	3.2	3.0
St Albans	131	2.9	3.0
St Johnsbury	127	4.6	4.4
White River Jct	328	6.7	6.9
Totals	1,999	3.2	3.2

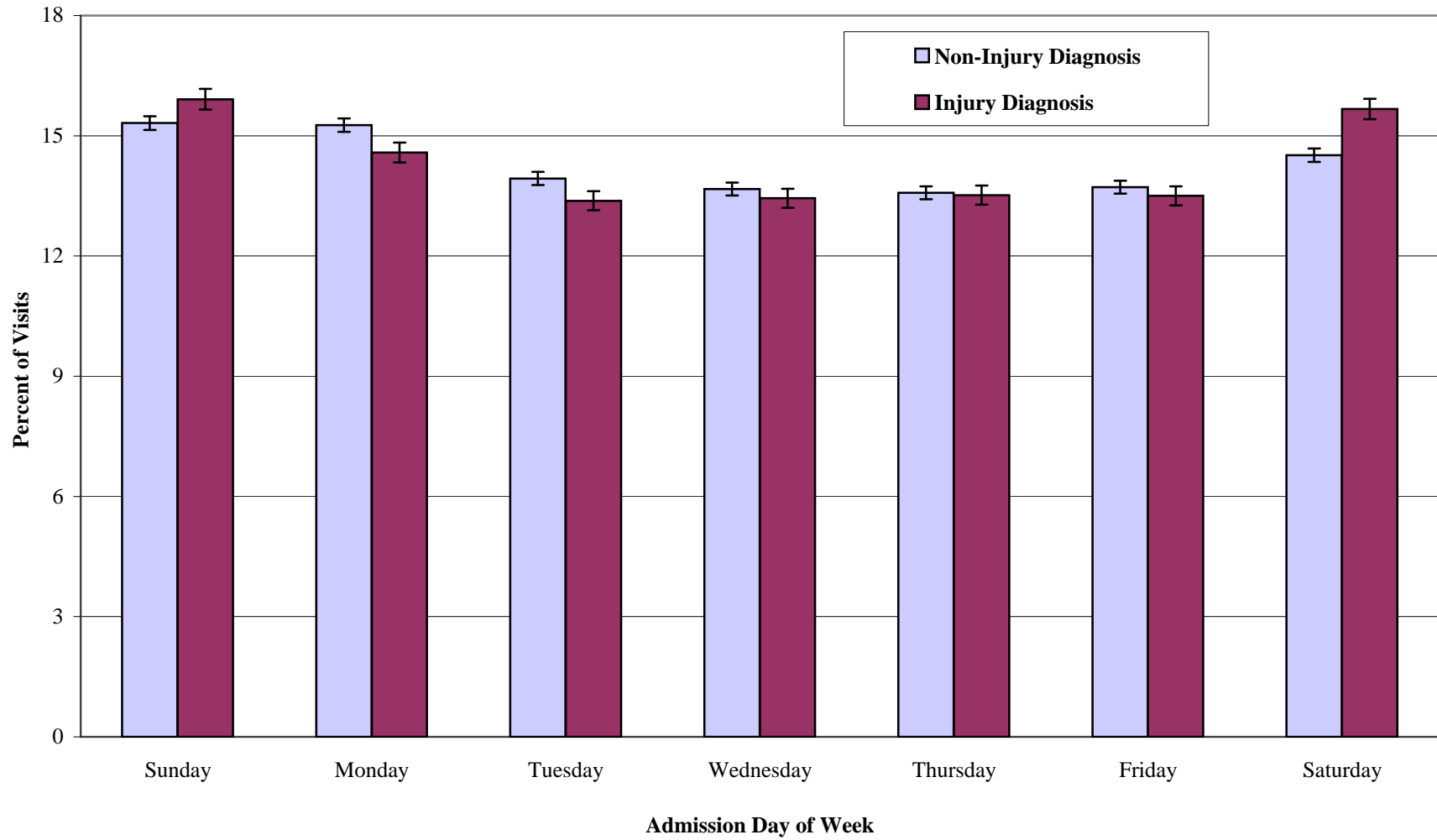
Vermont residents with ED visits not resulting in an inpatient stay in VT, NH, MA and NY hospitals.
 43 ED visits that did not have any diagnosis codes are excluded from this analysis.

Figure E1
Percent of Visits by Admission Day of Week and Type of ED Visit
2007 VT Hospital ED Visits, Includes VT Residents and Non-Residents



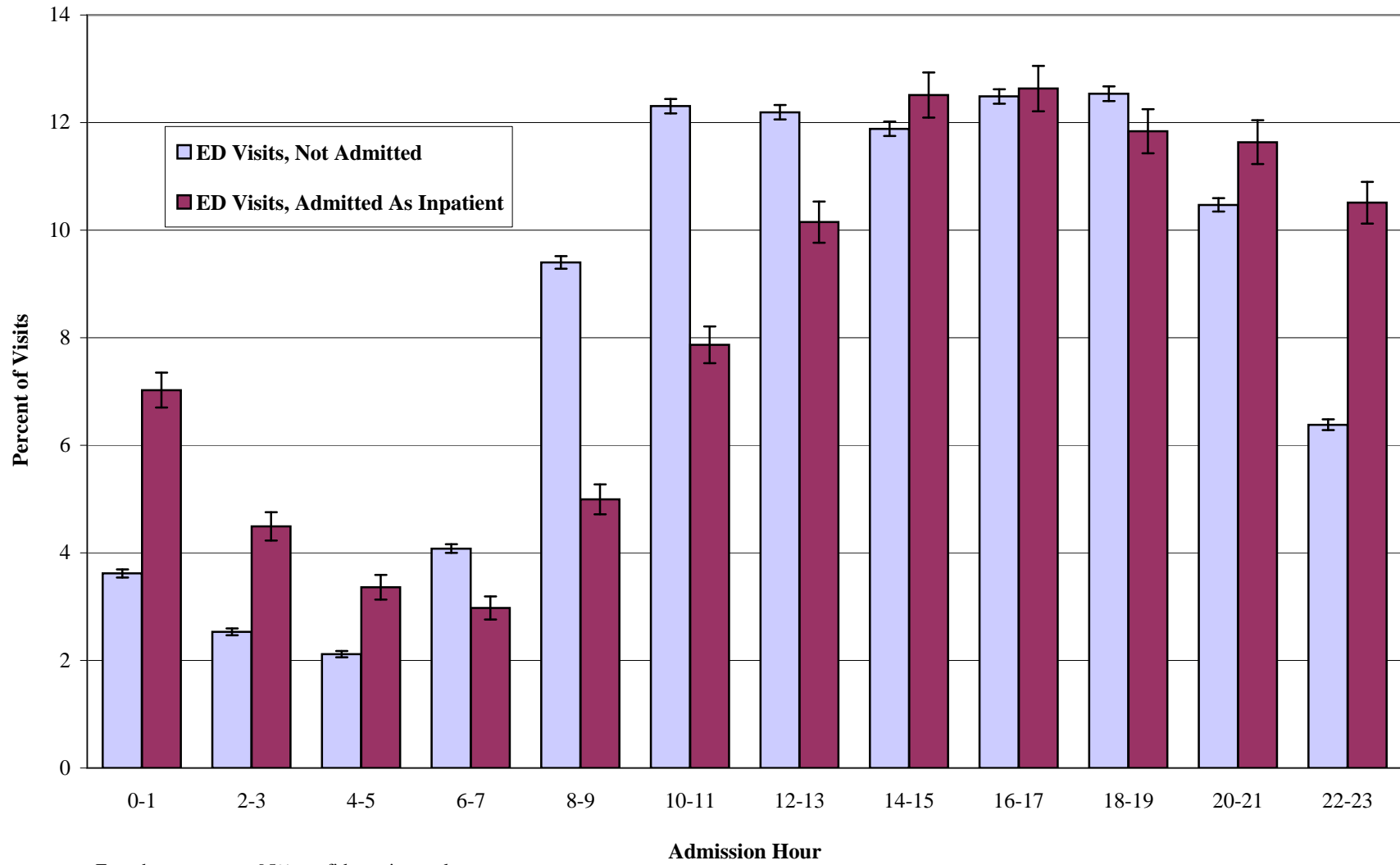
Error bars represent 95% confidence intervals

Figure E2
Percent of Visits by Admission Day of Week and Injury Versus Non-Injury Diagnosis
2007 VT Hospital ED Visits, Includes VT Residents and Non-Residents



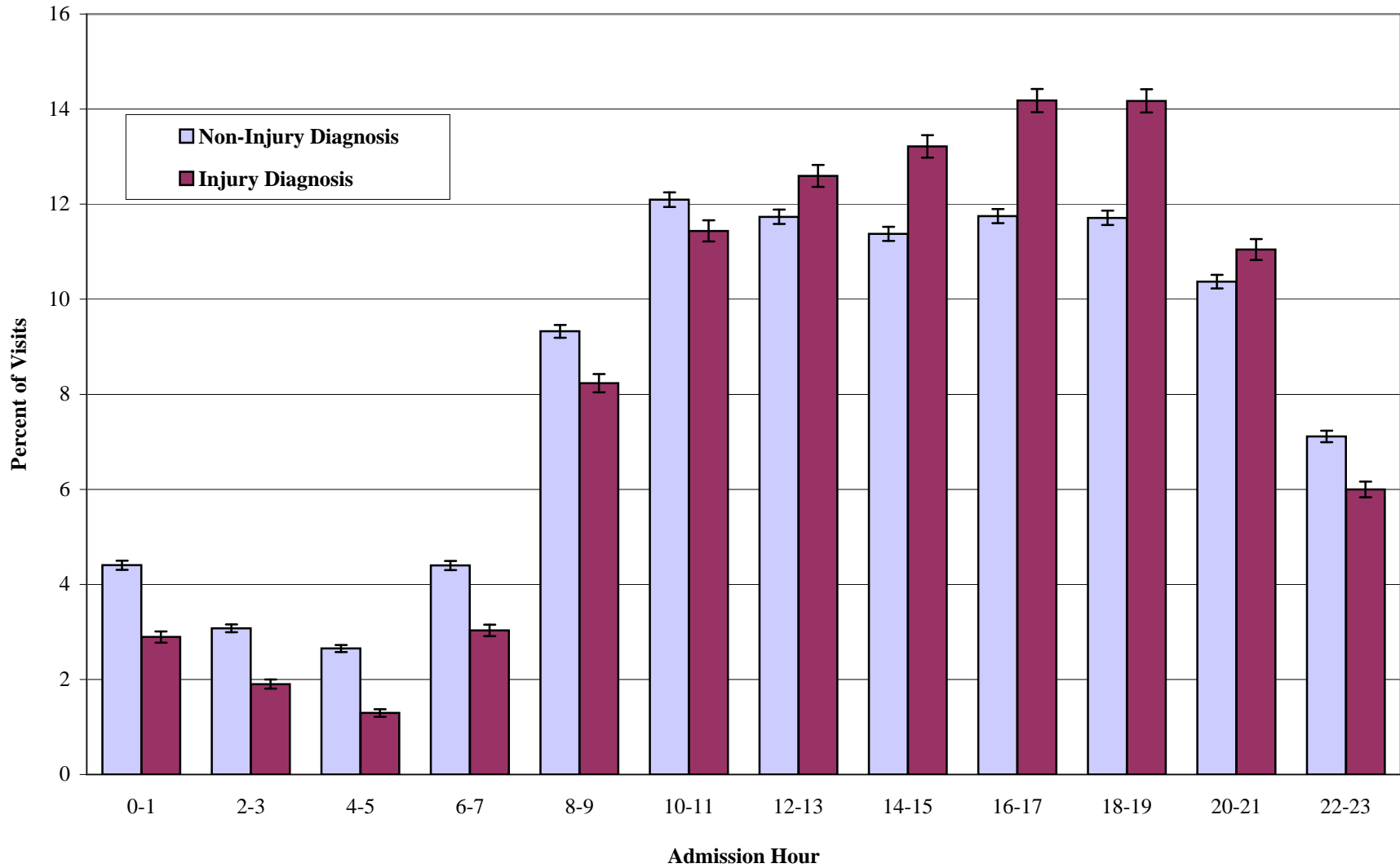
Error bars represent 95% confidence intervals

Figure E3
Percent of Visits by Admission Hour and Type of ED Visit
2007 VT Hospital ED Visits, Includes VT Residents and Non-Residents



Error bars represent 95% confidence intervals

Figure E4
Percent of Visits by Admission Hour and Injury Versus Non-Injury Diagnosis
2007 VT Hospital ED Visits, Includes VT Residents and Non-Residents



Error bars represent 95% confidence intervals

APPENDIX E1

Definitions and Formulae

Charges: Charges in this report are defined as hospital "facility" charges that are calculated by subtracting professional fees and patient convenience items charges from the total charge. However, facility charge data are not always reported according to the strict definition and some hospitals may have included salaried and contracted physician fees in their facility charges.

Clinical Classifications Software (CCS) Grouper: CCS was developed at the Agency for Healthcare Research and Quality (AHRQ) and is available at the website: <http://www.ahrq.gov/data/hcup/ccs.htm> CCS collapses principal diagnosis and procedure codes into meaningful categories. The single-level diagnosis CCS aggregates illnesses and conditions into more than 260 categories. Similarly, the single-level procedure CCS aggregates procedures into 231 categories, most representing single types of procedures. High level CCS groups further collapse single-level CCS into broad groups based on body systems or condition categories.

Diagnosis: The condition, determined after study, which occasioned the patient's admission to the hospital. The accuracy or reliability of the diagnosis depends on several factors including the physician's understanding of the problem and the recorder's ability to fit the condition to established coding conventions. For those cases with multiple problems, the primary diagnosis may not be the reason for surgery or cause of death.

Emergency Department (ED) Dataset: Consists of all records that had an associated revenue code beginning with 45 (Emergency Room).

Hospital Service Area (HSA): A group of Vermont ZipTowns (see definition of ZipTown on next page) based on each ZipTown's use of hospital resources. Starting in 2002, HSAs are based on inpatient discharges, where the diagnosis indicated the need for immediate care, for the years 1997-2001. In this fourth version of HSAs, ZipTowns

were assigned to HSAs based on a plurality rule. Prior definitions of HSAs have been based on all inpatient stays (except for newborns) and have used a strict decision rule for inclusion of ZipTowns in a hospital's service area. Use of a strict inclusion rule meant that there were always towns that were not assigned to any HSA and were labeled "contested." In this fourth version of HSAs, no towns are considered contested. See the Introduction for a map of HSAs and appendix E3 for a list of towns and hospitals within HSAs.

Two HSAs contain more than one hospital: White River Junction (Dartmouth Hitchcock Medical Center, Mt. Ascutney Hospital, and the Veterans Administration Hospital) and Brattleboro (Brattleboro Memorial Hospital and Grace Cottage Hospital).

Population-based Rate: The rate of a population's use of hospital services. Rates in this report represent hospital ED visits per 1,000 population for the selected group.

The *crude rate* is calculated as follows:

$\text{Crude Rate per 1,000 People} = \frac{\text{Number of Discharges or Visits For the Selected Group}}{\text{Total Population for the Selected Group}} \times 1,000$

These rates depend upon the accuracy of both the numerator and the denominator population. Data on population-at-risk (the denominator in these rates) are based on estimates. Rates for small areas or for groups with small numerators should be used with caution.

Age adjusted rates are particularly important for comparisons across areas because service areas have different population age mixes and age is a strong factor influencing hospitalization patterns. The age-adjusted rate for a given hospital service area is calculated by multiplying the area's age specific rate for each age group by the state population in that

age group, summing across age groups, and dividing the result by the total state population. This result is then multiplied by 1,000. The following age groups are used in this volume for the computation of age-adjusted rates: 0-4, 5-14, 15-24, 25-34, 35-44, 45-54, 55-64, 65-69, 70-74, 75-79, and 80+. In other publications, different standards, such as the projected year 2000 U.S. population, are used for age adjusting and different age groupings may also be used in the age adjusting process.

Principal Payer: The anticipated principal source of payment of the patient's hospital bill recorded by the hospital on each discharge record.

ZipTown Grouping: The combination of towns into groups with compatible town and Zip code boundaries to reconcile discrepancies between mailing address and town of residence. Towns are also grouped to achieve a minimum population of 1000 persons in each ZipTown group. ZipTowns were updated in 1996, with minor adjustments in 2004. This volume reflects these changes.

APPENDIX E2

2006 Clinical Classifications Software (CCS) High-Level and Single-Level Diagnosis Categories

CCS High Level Diagnosis Group 1: Infectious and Parasitic Diseases

- 1 Tuberculosis
- 2 Septicemia (except in labor)
- 3 Bacterial infection, unspecified site
- 4 Mycoses
- 5 HIV infection
- 6 Hepatitis
- 7 Viral infection
- 8 Other infections, including parasitic
- 9 Sexually transmitted infections (not HIV or hepatitis)
- 10 Immunizations & screening for infectious disease

CCS High Level Diagnosis Group 2: Neoplasms

- 11 Cancer of head & neck
- 12 Cancer of esophagus
- 13 Cancer of stomach
- 14 Cancer of colon
- 15 Cancer of rectum & anus
- 16 Cancer of liver & intrahepatic bile duct
- 17 Cancer of pancreas
- 18 Cancer of other GI organs, peritoneum
- 19 Cancer of bronchus, lung
- 20 Cancer, other respiratory & intrathoracic
- 21 Cancer of bone & connective tissue
- 22 Melanomas of skin
- 23 Other non-epithelial cancer of skin
- 24 Cancer of breast
- 25 Cancer of uterus
- 26 Cancer of cervix
- 27 Cancer of ovary
- 28 Cancer of other female genital organs
- 29 Cancer of prostate
- 30 Cancer of testis
- 31 Cancer of other male genital organs
- 32 Cancer of bladder
- 33 Cancer of kidney & renal pelvis
- 34 Cancer of other urinary organs

- 35 Cancer of brain & nervous system
- 36 Cancer of thyroid
- 37 Hodgkin's disease
- 38 Non-Hodgkin's lymphoma
- 39 Leukemias
- 40 Multiple myeloma
- 41 Cancer, other & unspecified primary
- 42 Secondary malignancies
- 43 Malignant neoplasm without specification of site
- 44 Neoplasms of unspecified nature or uncertain behavior
- 45 Maintenance chemotherapy, radiotherapy
- 46 Benign neoplasm of uterus
- 47 Other & unspecified benign neoplasm

CCS High Level Diagnosis Group 3: Endocrine, Nutritional, Metabolic, and Immunity Disorders

- 48 Thyroid disorders
- 49 Diabetes mellitus without complication
- 50 Diabetes mellitus with complications
- 51 Other endocrine disorders
- 52 Nutritional deficiencies
- 53 Disorders of lipid metabolism
- 54 Gout & other crystal arthropathies
- 55 Fluid & electrolyte disorders
- 56 Cystic fibrosis
- 57 Immunity disorders
- 58 Other nutritional, endocrine & metabolic disorders

CCS High Level Diagnosis Group 4: Diseases of the Blood and Blood-Forming Organs

- 59 Deficiency & other anemia
- 60 Acute posthemorrhagic anemia
- 61 Sickle cell anemia
- 62 Coagulation & hemorrhagic disorders
- 63 Diseases of white blood cells
- 64 Other hematologic conditions

APPENDIX E2

2006 Clinical Classifications Software (CCS) High-Level and Single-Level Diagnosis Categories

CCS High Level Diagnosis Group 5: Mental Disorders

- 65 Mental retardation
- 66 Alcohol-related mental disorders
- 67 Substance-related mental disorders
- 68 Senility & organic mental disorders
- 69 Affective disorders
- 70 Schizophrenia & related disorders
- 71 Other psychoses
- 72 Anxiety, somatoform, dissociative & personality disorders
- 73 Preadult disorders
- 74 Other mental conditions
- 75 Personal history of mental disorder, mental & behavioral problems, observation & screening for mental condition

CCS High Level Diagnosis Group 6: Diseases of the Nervous System and Sense Organs

- 76 Meningitis (except that caused by tuberculosis or STD)
- 77 Encephalitis (except that caused by tuberculosis or STD)
- 78 Other CNS infection & poliomyelitis
- 79 Parkinson's disease
- 80 Multiple sclerosis
- 81 Other hereditary & degenerative nervous system conditions
- 82 Paralysis
- 83 Epilepsy, convulsions
- 84 Headache, including migraine
- 85 Coma, stupor & brain damage
- 86 Cataract
- 87 Retinal detachments, defects, vascular occlusion & retinopathy
- 88 Glaucoma
- 89 Blindness & vision defects
- 90 Inflammation, infection of eye (except that caused by tuberculosis or STD)
- 91 Other eye disorders
- 92 Otitis media & related conditions
- 93 Conditions associated with dizziness or vertigo
- 94 Other ear & sense organ disorders
- 95 Other nervous system disorders

CCS High Level Diagnosis Group 7: Diseases of the Circulatory System

- 96 Heart valve disorders
- 97 Peri-, endo- & myocarditis, cardiomyopathy (except that caused by tuberculosis or STD)
- 98 Essential hypertension
- 99 Hypertension with complications & secondary hypertension
- 100 Acute myocardial infarction
- 101 Coronary atherosclerosis & other heart disease
- 102 Nonspecific chest pain
- 103 Pulmonary heart disease
- 104 Other & ill-defined heart disease
- 105 Conduction disorders
- 106 Cardiac dysrhythmias
- 107 Cardiac arrest & ventricular fibrillation
- 108 Congestive heart failure, nonhypertensive
- 109 Acute cerebrovascular disease
- 110 Occlusion or stenosis of precerebral arteries
- 111 Other & ill-defined cerebrovascular disease
- 112 Transient cerebral ischemia
- 113 Late effects of cerebrovascular disease
- 114 Peripheral & visceral atherosclerosis
- 115 Aortic, peripheral & visceral artery aneurysms
- 116 Aortic & peripheral arterial embolism or thrombosis
- 117 Other circulatory disease
- 118 Phlebitis, thrombophlebitis & thromboembolism
- 119 Varicose veins of lower extremity
- 120 Hemorrhoids
- 121 Other diseases of veins & lymphatics

CCS High Level Diagnosis Group 8: Diseases of the Respiratory System

- 122 Pneumonia (except that caused by tuberculosis or STD)
- 123 Influenza
- 124 Acute & chronic tonsillitis
- 125 Acute bronchitis
- 126 Other upper respiratory infections
- 127 Chronic obstructive pulmonary disease & bronchiectasis
- 128 Asthma

APPENDIX E2

2006 Clinical Classifications Software (CCS) High-Level and Single-Level Diagnosis Categories

- 129 Aspiration pneumonitis, food/vomitus
- 130 Pleurisy, pneumothorax, pulmonary collapse
- 131 Respiratory failure, insufficiency, arrest (adult)
- 132 Lung disease due to external agents
- 133 Other lower respiratory disease
- 134 Other upper respiratory disease

CCS High Level Diagnosis Group 9: Diseases of the Digestive System

- 135 Intestinal infection
- 136 Disorders of teeth & jaw
- 137 Diseases of mouth, excluding dental
- 138 Esophageal disorders
- 139 Gastroduodenal ulcer (except hemorrhage)
- 140 Gastritis & duodenitis
- 141 Other disorders of stomach & duodenum
- 142 Appendicitis & other appendiceal conditions
- 143 Abdominal hernia
- 144 Regional enteritis & ulcerative colitis
- 145 Intestinal obstruction without hernia
- 146 Diverticulosis & diverticulitis
- 147 Anal & rectal conditions
- 148 Peritonitis & intestinal abscess
- 149 Biliary tract disease
- 150 Liver disease, alcohol-related
- 151 Other liver diseases
- 152 Pancreatic disorders (not diabetes)
- 153 Gastrointestinal hemorrhage
- 154 Noninfectious gastroenteritis
- 155 Other gastrointestinal disorders

CCS High Level Diagnosis Group 10: Diseases of the Genitourinary System

- 156 Nephritis, nephrosis, renal sclerosis
- 157 Acute & unspecified renal failure
- 158 Chronic renal failure
- 159 Urinary tract infections
- 160 Calculus of urinary tract
- 161 Other diseases of kidney & ureters

- 162 Other diseases of bladder & urethra
- 163 Genitourinary symptoms & ill-defined conditions
- 164 Hyperplasia of prostate
- 165 Inflammatory conditions of male genital organs
- 166 Other male genital disorders
- 167 Nonmalignant breast conditions
- 168 Inflammatory diseases of female pelvic organs
- 169 Endometriosis
- 170 Prolapse of female genital organs
- 171 Menstrual disorders
- 172 Ovarian cyst
- 173 Menopausal disorders
- 174 Female infertility
- 175 Other female genital disorders

CCS High Level Diagnosis Group 11: Contraception and Complications of Pregnancy and Childbirth

- 176 Contraceptive & procreative management
- 177 Spontaneous abortion
- 178 Induced abortion
- 179 Postabortion complications
- 180 Ectopic pregnancy
- 181 Other complications of pregnancy
- 182 Hemorrhage during pregnancy, abruptio placenta, placenta previa
- 183 Hypertension complicating pregnancy, childbirth & the puerperium
- 184 Early or threatened labor
- 185 Prolonged pregnancy
- 186 Diabetes or abnormal glucose tolerance complicating pregnancy, childbirth, or the puerperium
- 187 Malposition, malpresentation
- 188 Fetopelvic disproportion, obstruction
- 189 Previous C-section
- 190 Fetal distress & abnormal forces of labor
- 191 Polyhydramnios & other problems of amniotic cavity
- 192 Umbilical cord complication
- 193 Trauma to perineum & vulva
- 194 Forceps delivery

APPENDIX E2

2006 Clinical Classifications Software (CCS) High-Level and Single-Level Diagnosis Categories

- 195 Other complications of birth, puerperium affecting management of mother
- 196 Normal pregnancy and/or delivery

CCS High Level Diagnosis Group 12: Diseases of the Skin and Subcutaneous Tissue

- 197 Skin & subcutaneous tissue infections
- 198 Other inflammatory condition of skin
- 199 Chronic ulcer of skin
- 200 Other skin disorders

CCS High Level Diagnosis Group 13: Musculoskeletal System and Connective Tissue

- 201 Infective arthritis & osteomyelitis (except that caused by tuberculosis or sexually transmitted disease)
- 202 Rheumatoid arthritis & related disease
- 203 Osteoarthritis
- 204 Other non-traumatic joint disorders
- 205 Spondylosis, intervertebral disc disorders, other back problems
- 206 Osteoporosis
- 207 Pathological fracture
- 208 Acquired foot deformities
- 209 Other acquired deformities
- 210 Systemic lupus erythematosus & connective tissue disorders
- 211 Other connective tissue disease
- 212 Other bone disease & musculoskeletal deformities

CCS High Level Diagnosis Group 14: Congenital Anomalies

- 213 Cardiac & circulatory congenital anomalies
- 214 Digestive congenital anomalies
- 215 Genitourinary congenital anomalies
- 216 Nervous system congenital anomalies
- 217 Other congenital anomalies

CCS High Level Diagnosis Group 15: Conditions Originating in the Perinatal Period

- 218 Liveborn
- 219 Short gestation, low birth weight & fetal growth retardation

- 220 Intrauterine hypoxia & birth asphyxia
- 221 Respiratory distress syndrome
- 222 Hemolytic jaundice & perinatal jaundice
- 223 Birth trauma
- 224 Other perinatal conditions

CCS High Level Diagnosis Group 16: Injury and Poisoning

- 225 Joint disorders & dislocations, trauma-related
- 226 Fracture of neck of femur (hip)
- 227 Spinal cord injury
- 228 Skull & face fractures
- 229 Fracture of upper limb
- 230 Fracture of lower limb
- 231 Other fractures
- 232 Sprains & strains
- 233 Intracranial injury
- 234 Crushing injury or internal injury
- 235 Open wounds of head, neck & trunk
- 236 Open wounds of extremities
- 237 Complication of device, implant or graft
- 238 Complications of surgical procedures or medical care
- 239 Superficial injury, contusion
- 240 Burns
- 241 Poisoning by psychotropic agents
- 242 Poisoning by other medications & drugs
- 243 Poisoning by nonmedicinal substances
- 244 Other injuries & conditions due to external causes

CCS High Level Diagnosis Group 17: Symptoms, Signs and Ill-Defined Conditions

- 245 Syncope
- 246 Fever of unknown origin
- 247 Lymphadenitis
- 248 Gangrene
- 249 Shock
- 250 Nausea & vomiting
- 251 Abdominal pain

APPENDIX E2

2006 Clinical Classifications Software (CCS) High-Level and Single-Level Diagnosis Categories

252 Malaise & fatigue
253 Allergic reactions
254 Rehabilitation care, fitting of prostheses & adjustment of devices
255 Administrative/social admission
256 Medical examination/evaluation
257 Other aftercare
258 Other screening for suspected conditions (not mental disorders or infectious disease)

CCS High Level Diagnosis Group 18: Residual Codes, Unclassified, All E codes (External Cause Codes)

259 Residual codes; unclassified
2601 E codes: Cut/pierce
2602 E codes: Drowning/submersion
2603 E codes: Fall
2604 E codes: Fire/burn
2605 E codes: Firearm

2606 E codes: Machinery
2607 E codes: Motor vehicle traffic (MVT)
2608 E codes: Pedal cyclist; not MVT
2609 E codes: Pedestrian; not MVT
2610 E codes: Transport; not MVT
2611 E codes: Natural/environment
2612 E codes: Overexertion
2613 E codes: Poisoning
2614 E codes: Struck by; against
2615 E codes: Suffocation
2616 E codes: Adverse effects of medical care
2617 E codes: Adverse effects of medical drugs
2618 E codes: Other specified and classifiable
2619 E codes: Other specified; not elsewhere classified (NEC)
2620 E codes: Unspecified
2621 E codes: Place of occurrence

APPENDIX E3
Towns and Hospitals in Vermont Hospital Service Areas
Based on 1997-2001 Vermont Resident Immediate Care Inpatient Discharges

BARRE – Central Vermont Medical Center

Calais+	Montpelier+	Moretown	Waitsfield+	Williamstown+
Calais	Barre City	Northfield+	Fayston	Washington
Woodbury	Barre Town	Northfield	Waitsfield	Williamstown
Worcester	Berlin	Roxbury	Warren	
Marshfield+	East Montpelier	Plainfield	Waterbury+	
Cabot	Middlesex	Topsham	Bolton	
Marshfield	Montpelier		Duxbury	
	Orange		Waterbury	

BENNINGTON – Southwestern Vermont Medical Center

Arlington+	Bennington+	Dorset+	Manchester	Whitingham
Arlington	Bennington	Dorset	Readsboro+	Wilmington+
Sandgate	Glastenbury	Rupert	Readsboro	Searsburg
Sunderland	Pownal	Dover+	Stamford	Wilmington
	Shaftsbury	Dover		
	Woodford	Somerset		

BRATTLEBORO – Brattleboro Memorial Hospital, Grace Cottage Hospital

Brattleboro+	Jamaica+	Newfane+	Vernon
Brattleboro	Jamaica	Brookline	Westminster+
Dummerston	Stratton	Newfane	Putney
Guilford	Wardsboro	Townshend	Westminster
Halifax	Winhall	Windham	
Marlboro			

+ Indicates an aggregated ZipTown group.

Use of Hospital Service Area definitions based on 1997-2001 immediate care inpatient discharges began in 2002.

Therefore, numbers reported here are not directly comparable to those published prior to 2002.

APPENDIX E3
Towns and Hospitals in Vermont Hospital Service Areas
Based on 1997-2001 Vermont Resident Immediate Care Inpatient Discharges

BURLINGTON – Fletcher Allen Health Care

Burlington	Fairfax	Huntington+	Milton	Westford
Cambridge+	Ferrisburgh	Buel's Gore	Monkton	Williston+
Cambridge	Grand Isle+	Huntington	Richmond	St.George
Fletcher	Grand Isle	Starksboro	Shelburne	Williston
Charlotte	North Hero	Jericho+	So. Burlington	Winooski
Colchester	Hinesburg	Jericho	South Hero	
Essex		Underhill		

MIDDLEBURY – Porter Medical Center

Bridport	Middlebury+	New Haven	Vergennes+
Bristol+	Cornwall	Orwell	Addison
Bristol	Middlebury	Shoreham+	Panton
Lincoln	Ripton	Shoreham	Vergennes
	Salisbury	Whiting	Waltham
	Weybridge		

MORRISVILLE – Copley Hospital

Craftsbury	Hardwick+	Hyde Park	Morrisville+
Eden+	Greensboro	Johnson	Elmore
Belvidere	Hardwick		Morristown
Eden	Stannard		Wolcott
Waterville			Stowe

+ Indicates an aggregated ZipTown group.

Use of Hospital Service Area definitions based on 1997-2001 immediate care inpatient discharges began in 2002.

Therefore, numbers reported here are not directly comparable to those published prior to 2002.

APPENDIX E3
Towns and Hospitals in Vermont Hospital Service Areas
Based on 1997-2001 Vermont Resident Immediate Care Inpatient Discharges

NEWPORT – North Country Hospital

Barton+	Canaan+	Irasburg+	Lowell +	Troy+
Barton	Averill	Albany	Lowell	Jay
Brownington	Avery's Gore	Irasburg	Westfield	Troy
Glover	Bloomfield	Island Pond+	Newport+	
Westmore	Brunswick	Brighton	Coventry	
	Canaan	Charleston	Derby	
	Lemington	Ferdinand	Holland	
	Norton	Lewis	Newport City	
	Warner's Grant	Morgan	Newport Town	
	Warren's Gore			

RANDOLPH – Gifford Medical Center

Bethel+	Chelsea	Randolph+	Rochester+
Barnard	Pittsfield+	Braintree	Granville
Bethel	Pittsfield	Randolph	Hancock
Brookfield	Stockbridge		Rochester

RUTLAND – Rutland Regional Medical Center

Brandon+	Danby+	Mt. Holly	Rutland+	Wells+
Brandon	Danby	Pawlet	Killington	Middletown Spr.
Goshen	Mt. Tabor	Pittsford+	Mendon	Wells
Leicester	Fair Haven+	Chittenden	Rutland City	West Rutland+
Sudbury	Benson	Pittsford	Rutland Town	Ira
Clarendon+	Castleton	Poultney	Wallingford+	West Rutland
Clarendon	Fair Haven	Proctor	Tinmouth	
Shrewsbury	Hubbardton		Wallingford	
	West Haven			

+ Indicates an aggregated ZipTown group.

Use of Hospital Service Area definitions based on 1997-2001 immediate care inpatient discharges began in 2002.

Therefore, numbers reported here are not directly comparable to those published prior to 2002.

APPENDIX E3
Towns and Hospitals in Vermont Hospital Service Areas
Based on 1997-2001 Vermont Resident Immediate Care Inpatient Discharges

SPRINGFIELD – Springfield Hospital

Cavendish	Chester+	Londonderry+	Ludlow
	Andover	Landgrove	Rockingham
	Athens	Londonderry	Springfield
	Baltimore	Peru	Weathersfield
	Chester	Weston	
	Grafton		

ST. ALBANS – Northwestern Medical Center

Alburgh+	Enosburgh+	Richford+	St. Albans+	Swanton+
Alburgh	Enosburgh	Berkshire	Georgia	Highgate
Isle La Motte	Montgomery	Richford	St. Albans City	Swanton
Bakersfield	Fairfield	Sheldon	St. Albans Town	
	Franklin			

ST. JOHNSBURY – Northeastern Vermont Regional Hospital

Barnet	Concord	Lyndon+	St. Johnsbury+
Burke+	Danville+	Kirby	St. Johnsbury
Burke	Danville	Lyndon	Waterford
East Haven	Walden	Wheelock	
Granby		Sheffield+	
Guildhall		Sheffield	
Lunenburg		Sutton	
Maidstone			
Newark			
Victory			

+ Indicates an aggregated ZipTown group.

Use of Hospital Service Area definitions based on 1997-2001 immediate care inpatient discharges began in 2002.

Therefore, numbers reported here are not directly comparable to those published prior to 2002.

APPENDIX E3
Towns and Hospitals in Vermont Hospital Service Areas
Based on 1997-2001 Vermont Resident Immediate Care Inpatient Discharges

WHITE RIVER JUNCTION – Dartmouth Hitchcock Medical Center, Mt. Ascutney Hospital and Health Center, and the Veterans Administration Medical Center

Bradford	Fairlee+	Hartford+	Ryegate	Windsor+
Bridgewater+	Fairlee	Hartford	Sharon	West Windsor
Bridgewater	Vershire	Pomfret	Thetford+	Windsor
Plymouth	West Fairlee	Hartland	Strafford	Woodstock
Reading	Groton+	Newbury	Thetford	
Corinth	Groton	Norwich	Tunbridge	
	Peacham	Royalton		

+ Indicates an aggregated ZipTown group.

Use of Hospital Service Area definitions based on 1997-2001 immediate care inpatient discharges began in 2002.

Therefore, numbers reported here are not directly comparable to those published prior to 2002.

APPENDIX E4
Hospitals in this Report

Vermont Acute Care Hospitals
(Abbreviations are used in Tables E8 - E11)

Brattleboro Memorial Hospital
(BRAT)
17 Belmont Avenue
Brattleboro, Vermont 05301

Central Vermont Medical Center
(CVMC)
P.O. Box 547
Barre, Vermont 05641

Copley Hospital
(COPL)
528 Washington Highway
Morrisville, Vermont 05661

Fletcher Allen Health Care
(FAHC)
111 Colchester Avenue
Burlington, Vermont 05401

Gifford Medical Center
(GIFF)
44 Main Street, P.O. Box 2000
Randolph, Vermont 05060

Grace Cottage Hospital
(GRAC)
Route 35, P.O. Box 216
Townshend, Vermont 05353

Mt. Ascutney Hospital and Health Center
(MT.A)
289 County Road
Windsor, Vermont 05089

North Country Hospital
(NCTY)
189 Prouty Drive
Newport, Vermont 05855

Northeastern Vermont Regional Hospital
(NEVT)
1315 Hospital Drive, P.O. Box 905
St. Johnsbury, Vermont 05819

Northwestern Medical Center
(NWST)
133 Fairfield Street, P.O. Box 1370
St. Albans, Vermont 05478

Porter Medical Center
(PORT)
115 Porter Drive
Middlebury, Vermont 05753

Rutland Regional Medical Center
(RRMC)
160 Allen Street
Rutland, Vermont 05701

Southwestern Vermont Medical Center
(SWVT)
100 Hospital Drive East
Bennington, Vermont 05201

Springfield Hospital
(SPRF)
25 Ridgewood Road, P.O. Box 2003
Springfield, Vermont 05156

The Veterans Administration Medical
and Regional Office Center (V.A.)
215 North Main Street
White River Junction, Vermont 05009

APPENDIX E4
Hospitals in this Report

New Hampshire Hospitals
(Abbreviations are used in Tables E8 - E11)

Alice Peck Day Memorial Hospital
(NH-Alice Day)
Lebanon, New Hampshire

Androscoggin Valley Hospital
(NH-Androscoggin)
Berlin, New Hampshire

Catholic Medical Center
(NH-Catholic)
Manchester, New Hampshire

Cheshire Medical Center
(NH-Cheshire)
Keene, New Hampshire

Concord Hospital
(NH-Concord)
Concord, New Hampshire

Cottage Hospital
(NH-Cottage)
Woodsville, New Hampshire

Dartmouth Hitchcock Medical Center
(NH-Hitchcock)
Lebanon, New Hampshire

Dartmouth Hitchcock Psychiatric Unit
(NH-Hitch. Psych)
Lebanon, New Hampshire

Elliot Hospital
(NH-Elliot)
Manchester, New Hampshire

Exeter Hospital
(NH-Exeter)
Exeter, New Hampshire

Franklin Regional Hospital
(NH-Franklin)
Franklin, New Hampshire

Frisbie Memorial Hospital
(NH-Frisbie)
Rochester, New Hampshire

Huggins Hospital
(NH-Huggins)
Wolfeboro, New Hampshire

Lakes Region General Hospital
(NH-Lakes Region)
Laconia, New Hampshire

Littleton Hospital
(NH-Littleton)
Littleton, New Hampshire

Memorial Hospital
(NH-Memorial)
North Conway, New Hampshire

Monadnock Community Hospital
(NH-Monadnock)
Peterborough, New Hampshire

New London Hospital
(NH-New London)
New London, New Hampshire

Parkland Medical Center
(NH-Parkland)
Derry, New Hampshire

Portsmouth Regional Hospital
(NH-Portsmouth)
Portsmouth, New Hampshire

Southern New Hampshire Medical Center
(NH-Southern NH)
Nashua, New Hampshire

St. Joseph's Hospital
(NH-St. Joseph's)
Nashua, New Hampshire

Speare Memorial Hospital
(NH-Speare)
Plymouth, New Hampshire

Upper Connecticut Valley Hospital
(NH-Upper CT Val)
Colebrook, New Hampshire

Valley Regional Hospital
(NH-Valley Reg.)
Claremont, New Hampshire

Weeks Medical Center Hospital
(NH-Weeks)
Lancaster, New Hampshire

Wentworth-Douglass Hospital
(NH-Wntwth-Doug)
Dover, New Hampshire

APPENDIX E4
Hospitals in this Report

Massachusetts Hospitals Most Frequently Used by Vermont Residents
(Abbreviations are used in Tables E8 - E11)

Baystate Medical Center
(MA-Baystate)
Springfield, Massachusetts

Berkshire Medical Center
(MA-Berkshire)
Pittsfield, Massachusetts

Beth Israel Deaconess Medical Center
(MA-Beth Israel)
Boston, Massachusetts

Brigham and Women's Hospital
(MA-Brigham)
Boston, Massachusetts

Children's Hospital Boston
(MA-Children's)
Boston, Massachusetts

Cooley Dickinson Hospital
(MA-Cooley Dicki)
Northampton, Massachusetts

Dana-Farber Cancer Institute
(MA-Dana Farber)
Boston, Massachusetts

Franklin Medical Center
(MA-Franklin Med)
Greenfield, Massachusetts

Hillcrest Hospital
(MA-Hillcrest)
Pittsfield, Massachusetts

Lahey Clinic Hospital
(MA-Lahey)
Burlington, Massachusetts

Massachusetts Eye and Ear Infirmary
(MA-MA Eye & Ear)
Boston, Massachusetts

Massachusetts General Hospital
(MA-MA General)
Boston, Massachusetts

New England Baptist Hospital
(MA-N.E. Baptist)
Boston, Massachusetts

Newton-Wellesley Hospital
(MA-Newton Wells)
Newton, Massachusetts

North Adams Regional Hospital
(MA-North Adams)
North Adams, Massachusetts

Northampton VA Medical Center
(MA-Northampton)
Northampton, Massachusetts

Tufts-New England Medical Center
(MA-N.E. Med Ctr)
Boston, Massachusetts

UMass Memorial Medical Center
(MA-U Mass)
Worcester, Massachusetts

VA Boston Healthcare—Boston Division
(MA-Boston VA)
Boston, Massachusetts

VA Boston Healthcare—Brockton Division
(MA-Brockton VA)
Brockton, Massachusetts

Other Massachusetts hospitals are grouped together in Table E10.

APPENDIX E4
Hospitals in this Report

New York Hospitals Most Frequently Used by Vermont Residents
(Abbreviations are used in Tables E8 - E11)

Albany Medical Center Hospital
(NY-Albany)
Albany, New York

Mary McClellan Hospital
(NY-McClellan)
Cambridge, New York

Phelps Memorial Hospital Center
(NY-Phelps)
Sleepy Hollow, New York

Champlain Valley Physicians Hospital
Medical Center (NY-Champ Val)
Plattsburgh, New York

Memorial Hospital for Cancer and Allied
Disorders (NY-Hosp for CA)
New York, New York

Samaritan Hospital
(NY-Samaritan)
Troy, New York

Columbia Presbyterian Medical Center
(NY-Presbyterian)
New York, New York

Moses-Ludington Hospital
(NY-Moses-Luding)
Ticonderoga, New York

St. Peters Hospital
(NY-St Peters)
Albany, New York

Glens Falls Hospital
(NY-Glens Falls)
Glens Falls, New York

New York United Hospital Medical Center
(NY-United Med C.)
Port Chester, New York

Leonard Hospital
(NY-Leonard)
Troy, New York

New York Weill Cornell Medical Center
(NY-New York)
New York, New York

Other New York hospitals are grouped
together in Table E10.